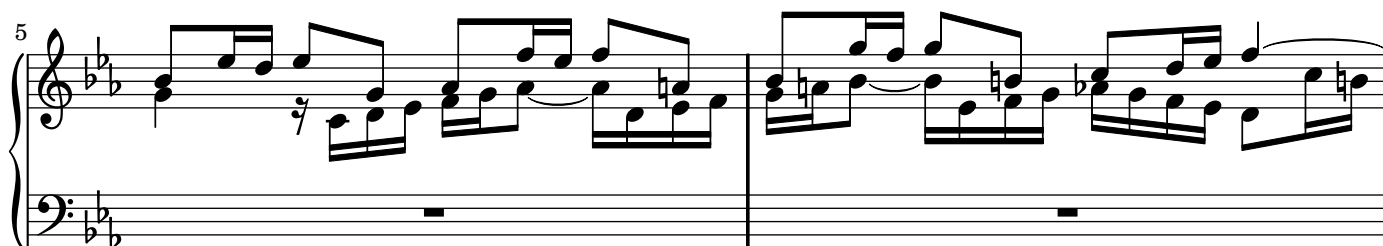


Fuga a 3 voci

Johann Sebastian Bach (1685-1750)

BWV 847



11

Measures 11 and 12 of a piano piece in B-flat major. Measure 11 features a treble staff with eighth-note runs and a bass staff with a steady eighth-note accompaniment. Measure 12 continues the treble staff's melodic line while the bass staff introduces a triplet of eighth notes.

13

Measures 13 and 14. Measure 13 shows a more active treble staff with sixteenth-note patterns, while the bass staff maintains a simple eighth-note accompaniment. Measure 14 features a treble staff with a descending melodic line and a bass staff with a triplet of eighth notes.

15

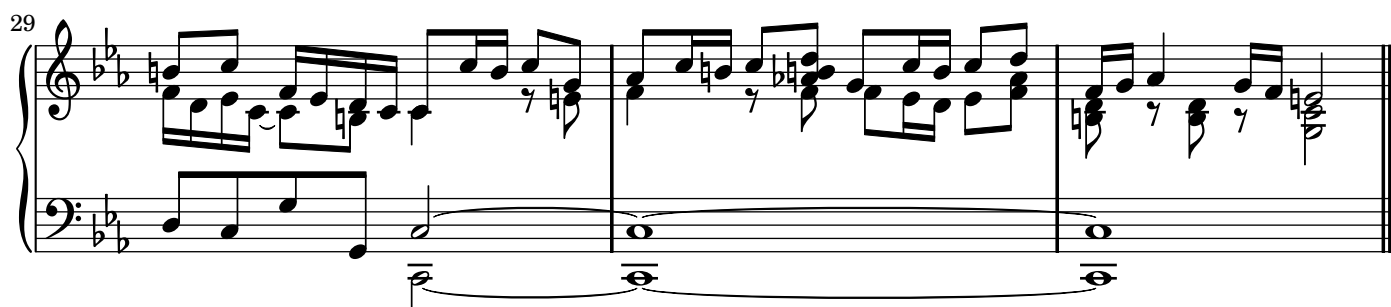
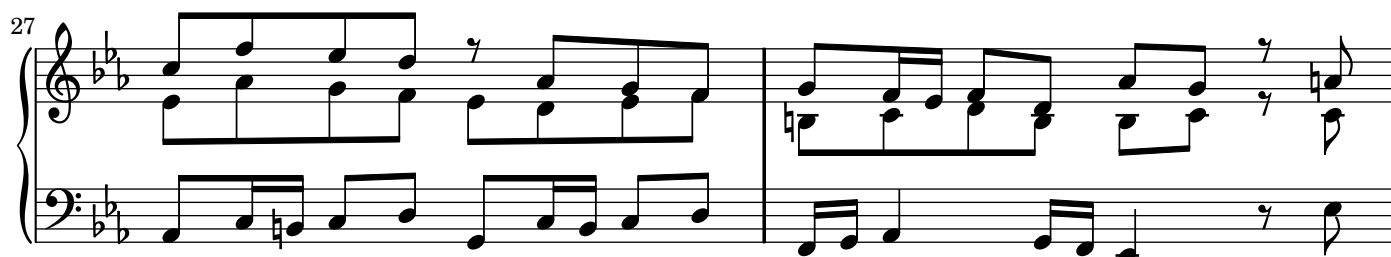
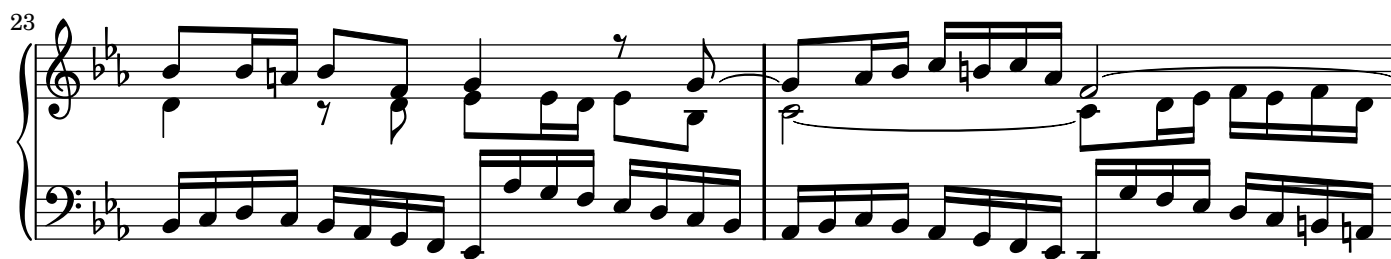
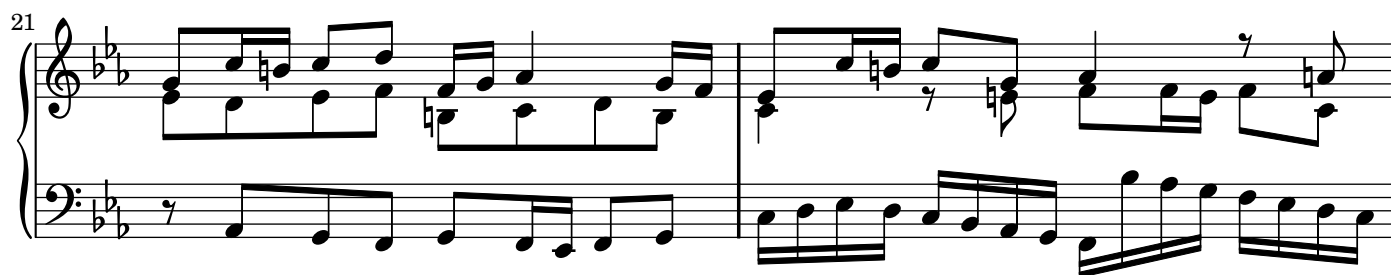
Measures 15 and 16. Measure 15 has a treble staff with a melodic line containing a sharp sign and a bass staff with a simple eighth-note accompaniment. Measure 16 continues the treble staff's melody and the bass staff's accompaniment.

17

Measures 17 and 18. Measure 17 features a treble staff with a complex melodic line including a sharp sign and a bass staff with a simple eighth-note accompaniment. Measure 18 continues the treble staff's melody and the bass staff's accompaniment.

19

Measures 19 and 20. Measure 19 has a treble staff with a melodic line and a bass staff with a simple eighth-note accompaniment. Measure 20 continues the treble staff's melody and the bass staff's accompaniment.



Mutopia-2002/08/19-6

This music is part of the Mutopia project, <http://sca.uwaterloo.ca/Mutopia/>

It has been typeset and placed in the public domain by hanwen@cs.uu.nl.

Unrestricted modification and redistribution is permitted and encouraged. Copy this music and share it!