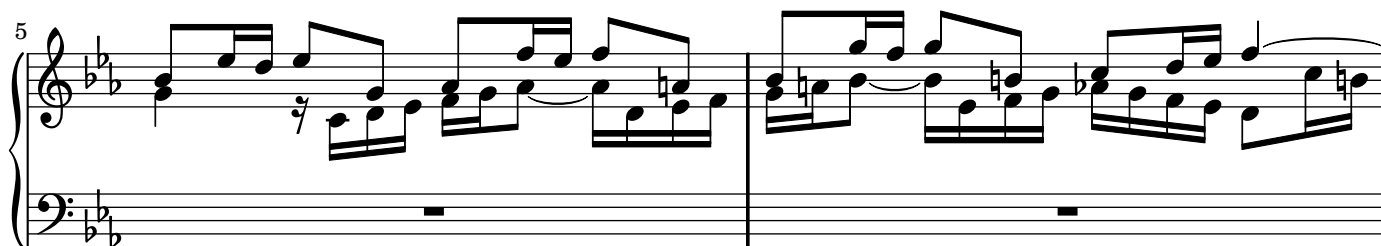


Fuga a 3 voci

Johann Sebastian Bach (1685-1750)

BWV 847



11

Measures 11 and 12 of a piano piece in B-flat major. Measure 11 features a treble staff with eighth-note runs and a bass staff with a steady eighth-note accompaniment. Measure 12 continues the patterns with some rests in the treble staff.

13

Measures 13 and 14. Measure 13 shows a more active treble staff with sixteenth-note runs, while the bass staff maintains a consistent eighth-note accompaniment. Measure 14 features a change in the bass staff with a half-note chord.

15

Measures 15 and 16. Measure 15 has a treble staff with eighth-note patterns and a bass staff with a half-note accompaniment. Measure 16 continues the eighth-note runs in the treble and the half-note accompaniment in the bass.

17

Measures 17 and 18. Measure 17 features a treble staff with eighth-note runs and a bass staff with a half-note accompaniment. Measure 18 continues the patterns with some rests in the treble staff.

19

Measures 19 and 20. Measure 19 shows a treble staff with eighth-note runs and a bass staff with a half-note accompaniment. Measure 20 continues the patterns with some rests in the treble staff.

