

**DSS-M3.0 Client
User's Manual**

Version 1.0.0

Table of Contents

1	OVERVIEW.....	1
1.1	Intro to the Product.....	1
2	INSTALL AND UNINSTALL.....	2
2.1	Install.....	2
2.2	Uninstall.....	4
3	LOGIN CLIENT.....	6
3.1	Login Client.....	6
4	SETUP.....	8
4.1	Vehicle.....	8
4.1.1	Config Electronic Fence.....	9
4.1.2	Dispatching.....	10
4.1.3	Key Monitoring.....	12
4.1.4	Real-time Monitoring.....	13
4.1.5	Snapshot Sampling.....	13
4.1.6	Message Dispatching.....	14
4.1.7	SMS.....	15
4.1.8	Audio Talk.....	16
4.1.9	Playback.....	16
4.1.10	Locus Playback.....	16
4.1.11	Alarm Process.....	17
4.1.12	Device Memo.....	18
4.1.13	Report.....	18
4.2	Preview.....	19
4.2.1	Real Time Monitoring.....	19
	DSS-M Client supports real time preview.....	19
4.2.2	Record.....	21
4.2.3	Snapshot.....	22
4.2.4	PTZ.....	22
4.3	Alarm Manager.....	25
4.4	Playback.....	26
4.4.1	Playback.....	26
4.4.2	Download.....	28

5	EXTENSION	31
5.1	TV Wall.....	31
5.2	Audio Talk.....	33
5.2.1	Audio Talk.....	33
5.3	Broadcast	35
6	SETUP MANAGER	37
6.1	Local Config.....	37
6.2	Alarm Scheme.....	38
6.3	Tour Task.....	43
6.4	Local Date	45

Welcome

Thank you for using our Digital Surveillance System (DSS)!

This user's manual is designed to be a reference tool for operation of your system.

Here you can find detailed operation information about DSS.

1 Overview

1.1 Intro to the Product

DSS-M Client is software for user to manage DSS-M and it has the following functions:

- Multi-device, multi-channel real time monitoring and record playback
- Bidirectional talk allows client to communicate with front-end device and broadcast.
- E-map function allows user to receive vehicle GPS info.
- Easy management over wall display with synchronous display.
- Customize monitoring plan and supports multi-channel/window video tour.
- Alarm activation with alarm video
- Mouse simulating rocker to control PTZ
- Easy search of video with mark function
- Local snapshot
- Behavior analysis, face recognition, smart track and people count.

2 Install and Uninstall

2.1 Install

Please follow these steps to install DSS-M Client:

Step 1. Download and install the Client

- a) In Internet Explorer, input the IP address of DSS-M. System displays login interface of DSS-M Manager. Download Client and double click on DSSMClient_Setup.exe, you will see Figure 2- 1.



Figure 2- 1

Step 2. Click on Next. System pops up an END-USER LICENSE AGREEMENT as in Figure 2- 2.

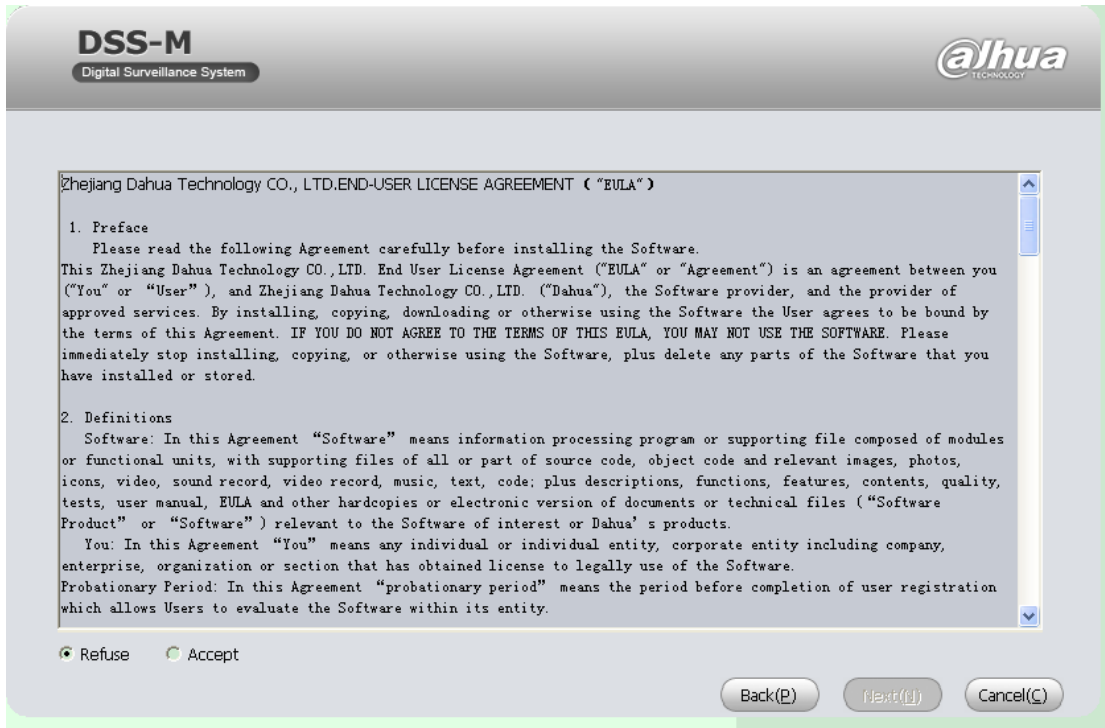


Figure 2- 2

Step 3. Select Accept and click on Next. System pops up Destination Folder box as in Figure 2- 3.

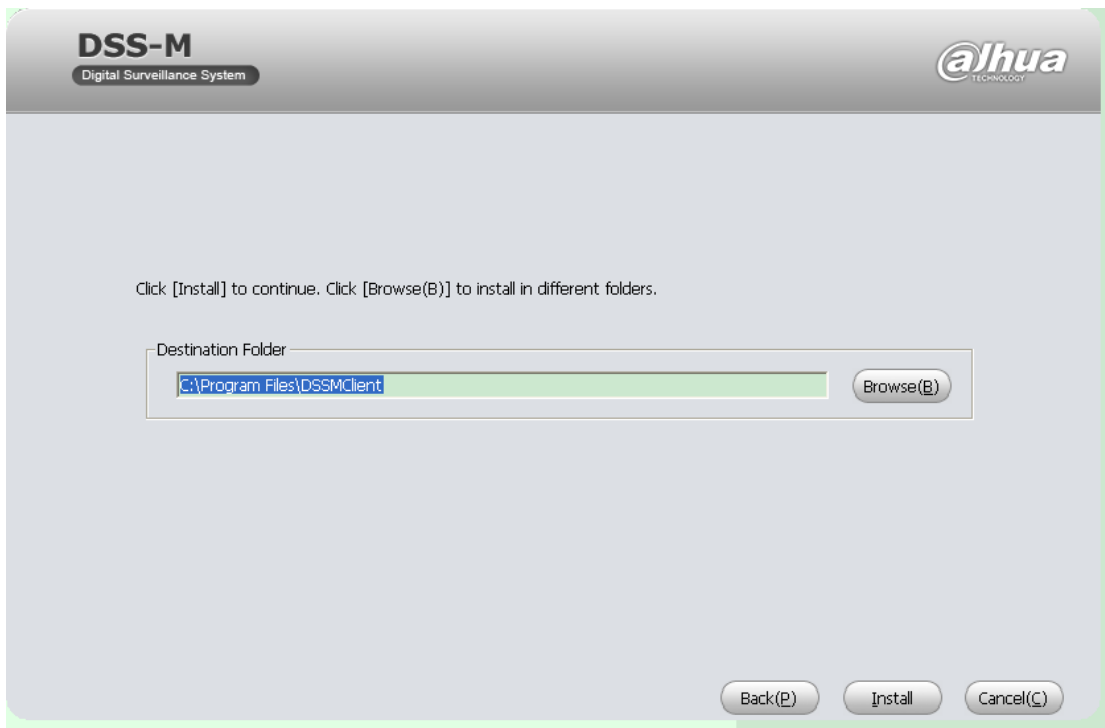


Figure 2- 3

Step 4. Select path to install Client. And click on Install. System displays progress of installation as in Figure 2- 4. When installation is complete, system will say installation is successful.

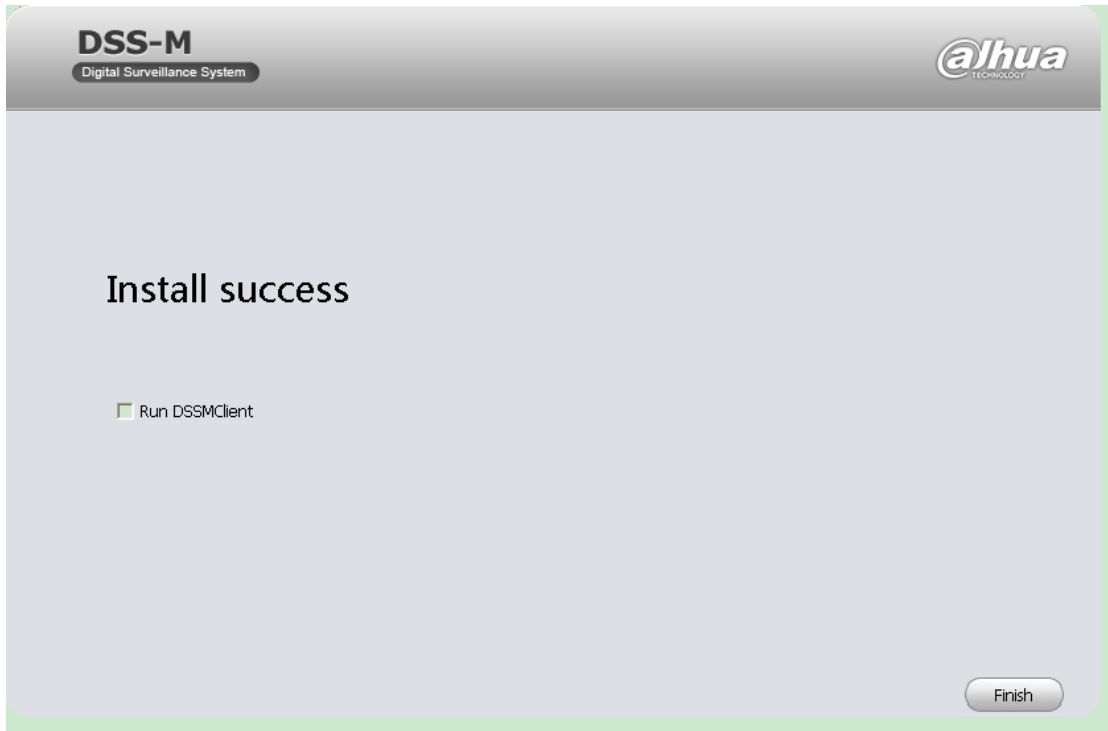


Figure 2- 4

Step 5. Click on Finish. See Figure 2- 5.

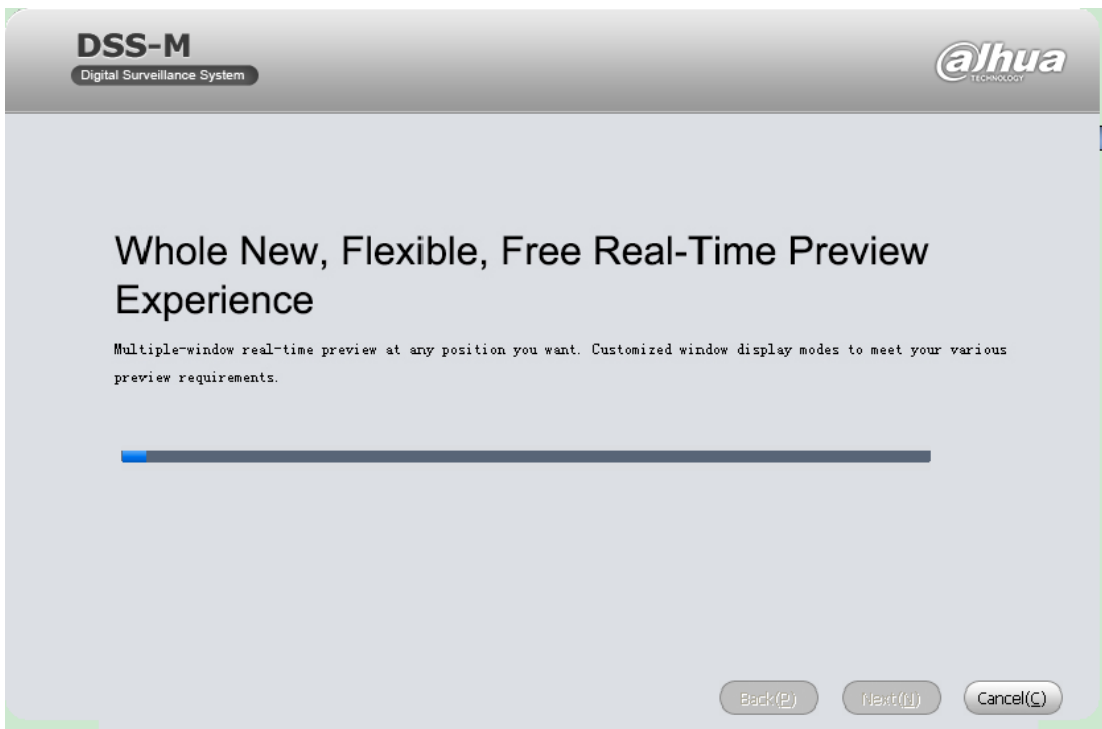


Figure 2- 5

2.2 Uninstall

You can follow these steps to uninstall DSS-M Client.

Step 1. Select Start>Programs>DSSMClient>Uninstall DSSMClient. System pops up a box as in Figure 2- 6.



Figure 2- 6

Step 2. Click on Uninstall. System displays progress of uninstallation and system will say that DSS-M uninstallation is successful.

Step 3. Click on OK.

3 Login Client

3.1 Login Client

Note:

Before you login DSS-M Client, you must add user in General>Account, and also you must add rights of preview, playback, record download, PTZ and etc. to role of this user. Please refer to *DSS-M3.0 Manager User's Manual V1.0.0*.

You can login DSS-M Client following these steps:



Step 1. Double click on  icon. System pops up the login interface as in Figure 3- 1.

The login interface for the DSS-M Digital Surveillance System. The window has a grey header with 'DSS-M' and 'Digital Surveillance System' on the left, and the 'dahua TECHNOLOGY' logo on the right. The main area contains a 'User Name:' field with a dropdown menu showing 'system', a 'Password:' field with six dots, a checked 'Remember Password' checkbox, and two buttons labeled 'Login' and 'Exit'. An 'Extension' dropdown menu is located to the right of the buttons. At the bottom, it says 'Designed by Dahuatech'.

Figure 3- 1

Step 2. Input Username and Password.

Step 3. Click on Extension, and input Server IP and Port.



Note:

Server IP shall be the IP address of DSS-M. Default port is 9000.

Step 4. Click on Login. System pops up main interface as in Figure 3- 2.



Figure 3- 2

- Click on  to switch user.
- Click on  to lock account. To unlock, you need to input login password in box pops up.

4 Setup

4.1 Vehicle

Vehicle interface provides monitoring, preview, snapshot viewing, message dispatching, sms, talk, playback, pattern playback, alarm, device note and statistical chart.

Note:

Before using vehicle function, please make sure the PC where Client is installed is connected to the Internet.





Click on , enter vehicle interface, see Figure 4- 1.



Figure 4- 1

No.	Interface	Note
1	Map operation	<ul style="list-style-type: none"> ● Clear, clear operation on map ● Switch, switch map of city ● Search, search and position on map ● Hide, hide device name on map ● Zoom, right-click to zoom map ● Point, click to select device ● Line, draw line to select device ● Pane, draw box to select device ● Circle, draw circle to select device ● Reset, if map shifts, click on reset to return to current position ● Layer, display image layer on map You can select display alarm vehicle, low-speed vehicle, over-speed vehicle, normal vehicle and offline vehicle or not. ● Distance, measure distance between two points. ● Area measure area of selected ● Mark, mark on map
2	Device list, electronic fence and dispatching	<ul style="list-style-type: none"> ● Under device tab, check device as you want to receive this device's info. Detail info will be displayed under GPS tab. ● Under electronic fence tab, create speed limit area, driving area, forbidden area, departure area and arrival area's electronic fence. When vehicle pass this area, and if it drives against the standard, alarm occurs. Alarm info display under global over-speed, area speed limit, over-load, emergency and other tabs. ● Under dispatching tab, tour device, and view preview.
3	Real-time GPS and alarm	<ul style="list-style-type: none"> ● Real-time GPS Display ordered device info. Double click on device, to view monitoring preview. ● Alarm When vehicle drive again standard in electronic fence area, such as over-speed, over-load, alarm occurs. Alarm includes global over-speed, area speed limit and etc.
4	Vehicle config	<p>Click on , config display list and tour.</p> <ul style="list-style-type: none"> ● List display Display global over-speed, area speed limit and etc. or not. ● Patrol config Config dispatching time. When it is tour time,tour auto stops.

4.1.1 Config Electronic Fence

Electronic fence includes limit, drive, forbid, start and arrive. By config electronic fence on map, when vehicle pass, those against standard will cause alarm.

Step 1. Click on electronic fence tab, see Figure 4- 2.

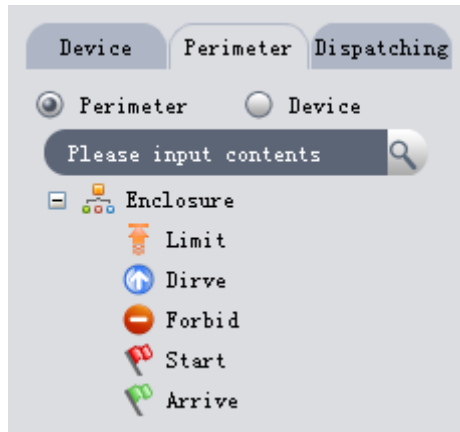


Figure 4- 2

Step 2. Right click on speed limit area, select add.

Step 3. Click on certain point on map to mark as starting point, and add points in sequence.

Double click to end adding of point.

Step 4. In fence property box, config fence type, speed limit and fence name.

Step 5. Click on OK. Newly added speed limit area displays under electronic fence tab.

4.1.2 Dispatching

Dispatching is to tour vehicle.

Step 1. Click on Dispatching tab.

Step 2. Check device. System pops up tour box. See Figure 4- 3.

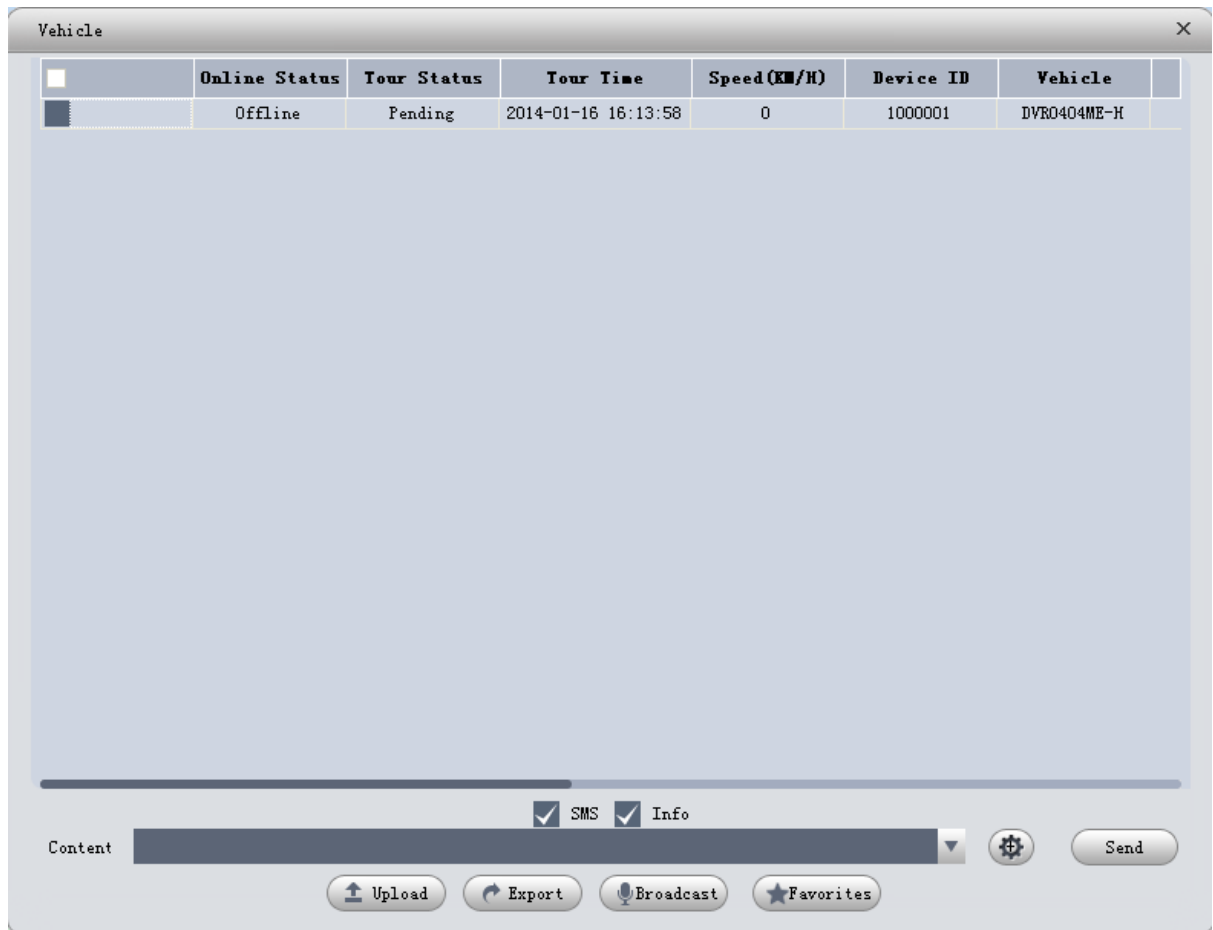




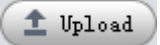
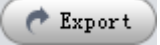

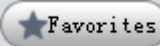
Figure 4- 3

Step 3. Double click on device info. System displays tour video.

No.	Interface	Note
1	Stream info and shortcut	Display stream info and shortcut button. Refer to Ch 4.2.1.
2	Video window	Achieve real-time monitoring. Right click on video window, to snapshot current video, save on ventral server or full screen.
3	Monitoring channel	Check channel to display channel video. Click on snapshot to snapshot selected channel.
4	Send message	Click on  , in info message tab, add new content and save. From dropdown list, select new info, click on

		send to send info to device.
5	Monitoring condition	According to channel display, select monitoring condition from dropdown list.
6	Patrol note	Fill in normal, abnormal condition, and click on OK.

Step 4. According to actual monitoring condition, config Note, and click on OK. Now in tour window, tour status changed from pending to processed.

No.	Interface	Note
1	Send message and SMS	<ul style="list-style-type: none"> • Message, as send to device. • SMS, send to mobile phone of drive of the device. <p>Click on , in info box, add content and save.</p> <p>Select new info, click on send to send message or SMS.</p>
2	Quick operation	<ul style="list-style-type: none"> •  Upload Click on upload, config tour name and result. Click on save to upload. •  Export Click on export to export tour window info to local and save as .xls format. •  Broadcast Check device, and click on start broadcast. •  Favorites Click on favorite, config dispatch group name. Save current tour group to group dispatch under dispatching tab.

4.1.3 Key Monitoring

You can key monitor vehicle.

Step 1. Under Device tab, check a device. To order one device, there will display GPS info on interface, and map shows device real-time info and config info. Config info displays current vehicle driver info, trainman info, vehicle info and device.

Step 2. Right-click on device, select key monitoring. See Figure 4- 4.

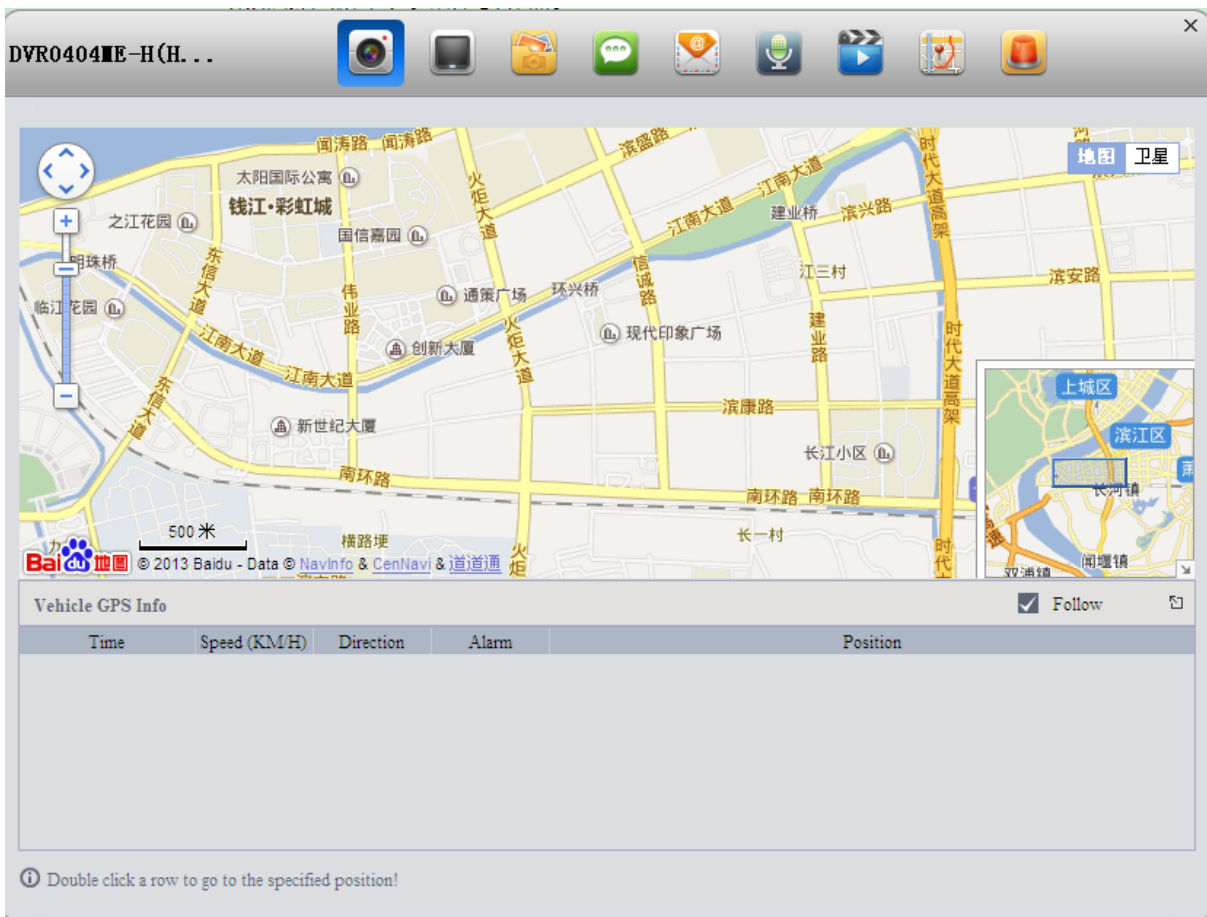



Figure 4- 4

Map displays 10-min driving pattern of vehicle.

Step 3. Double click on a row to position point on map.

4.1.4 Real-time Monitoring

System previews four channels by default.

In key monitoring interface, click on  or right-click select realtime monitor (preview) under device tab. System displays preview.

For preview details, refer to Ch 4.1.2 step 3.

4.1.5 Snapshot Sampling

To save GPS flow, you can sample snapshot to snapshot designated video channel.

Step 1. In key monitoring interface, click on  or under device tab, right-click on device and select snapshot sampling.

Step 2. Check channel to snapshot.

Step 3. Click on snapshot. See Figure 4- 5.

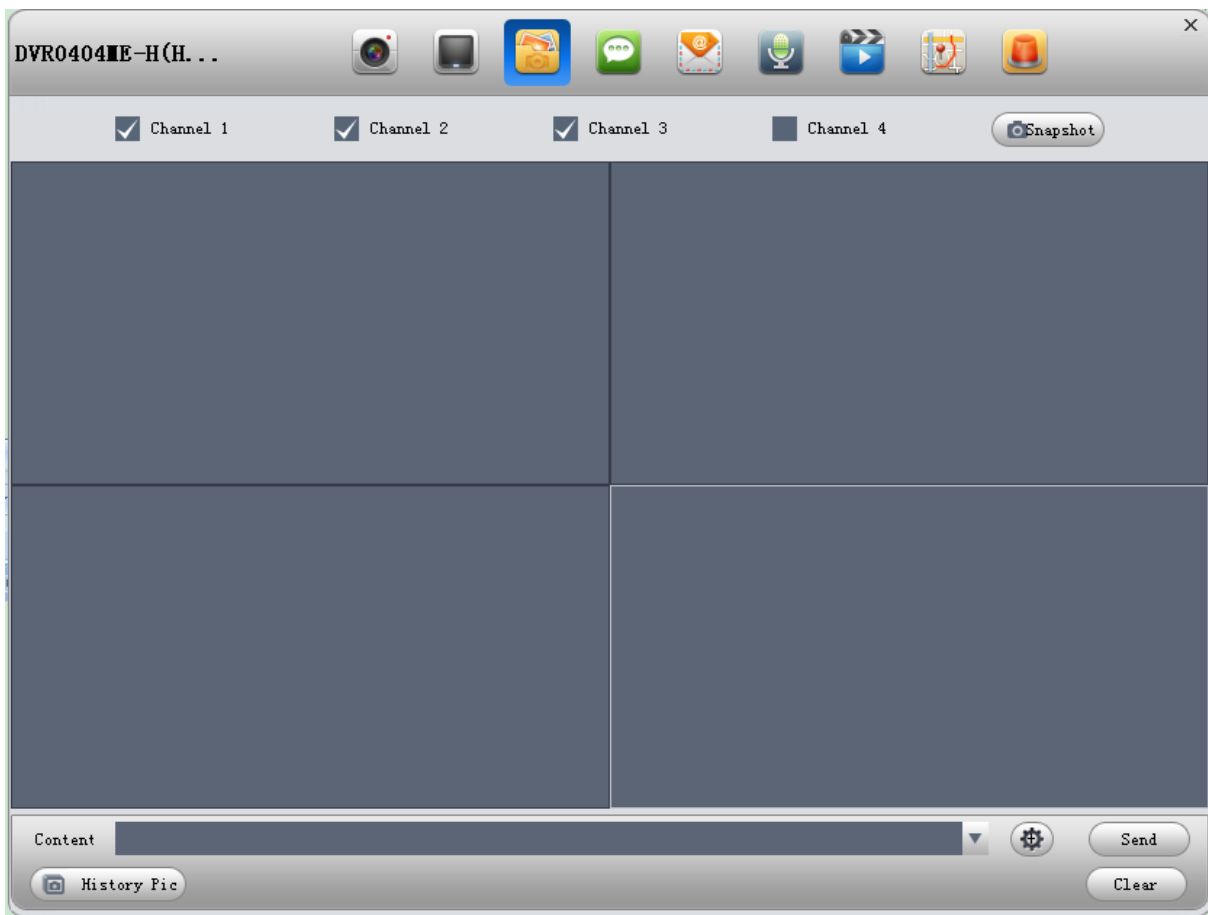



Figure 4- 5

4.1.6 Message Dispatching

You can search sent message under message dispatching.

Under key monitoring interface, click on  or under device tab, right-click device to select message dispatching, input search time and click on search. See Figure 4- 6.

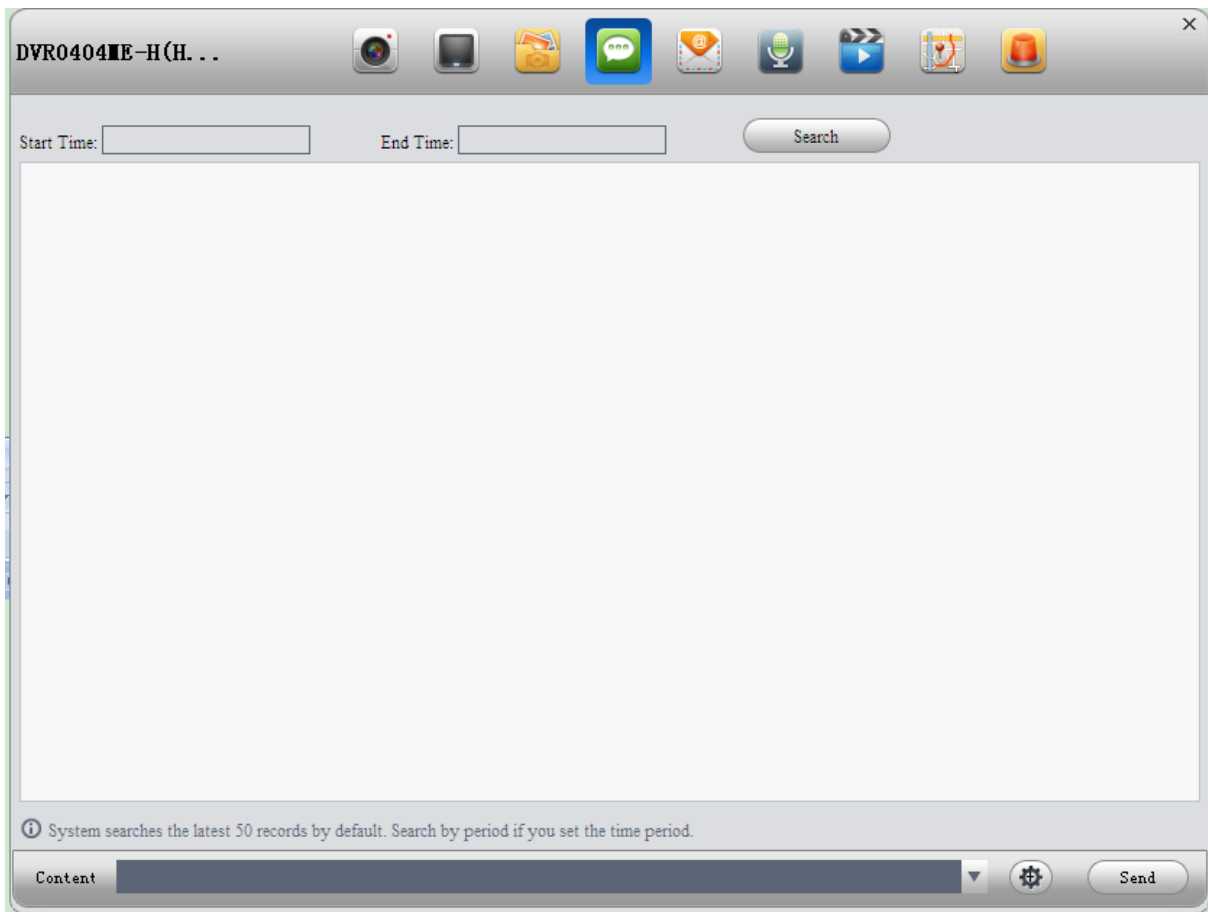



Figure 4- 6

4.1.7 SMS

You can search sent SMS under SMS prompt.

Under key monitoring interface, click on  or under device interface, right-click device to select SMS prompt. Input search time, and click on search. See Figure 4- 7.

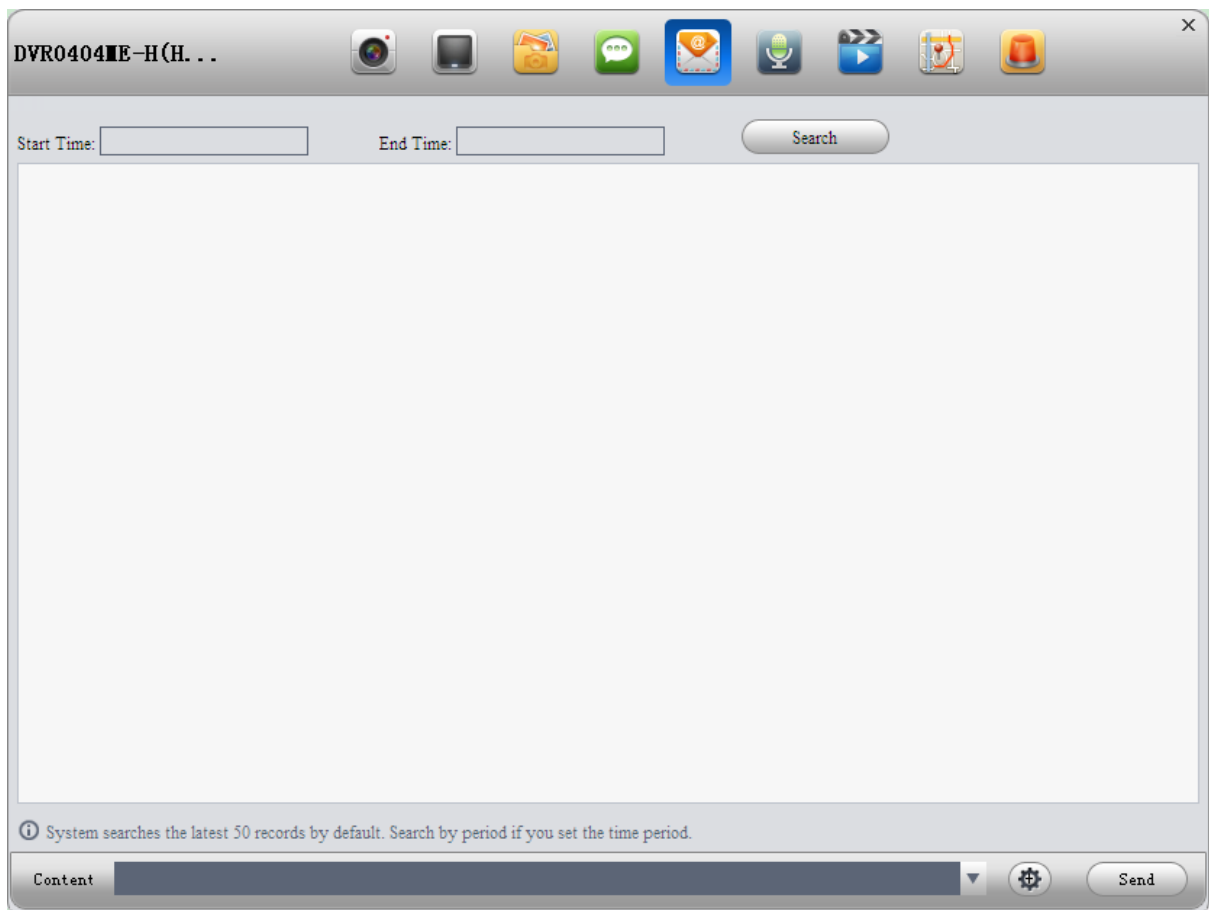


Figure 4- 7


4.1.8 Audio Talk

Refer to Ch 5.2.1.

4.1.9 Playback

Refer to Ch 4.4.1. Playback supports search and playback of record on device and central server.

4.1.10 Locus Playback

Under key monitoring interface, click on  or under device tab, right-click device to select locus playck, to enter pattern playback interface.

You can use GPS, device and platform, to search playback of current device pattern.

- GPS, display current device GPS info and pattern.
- Device, display current device GPS and record on device.
- Platform, display current device GPS and record on central server. (as record by plan)

Note:

Double click on pattern, view device record of 5min based on current time.

For example, to search GPS:

- Step 1. Config start time and end time.
- Step 2. Select GPS.

Step 3. Click on search. See Figure 4- 8.

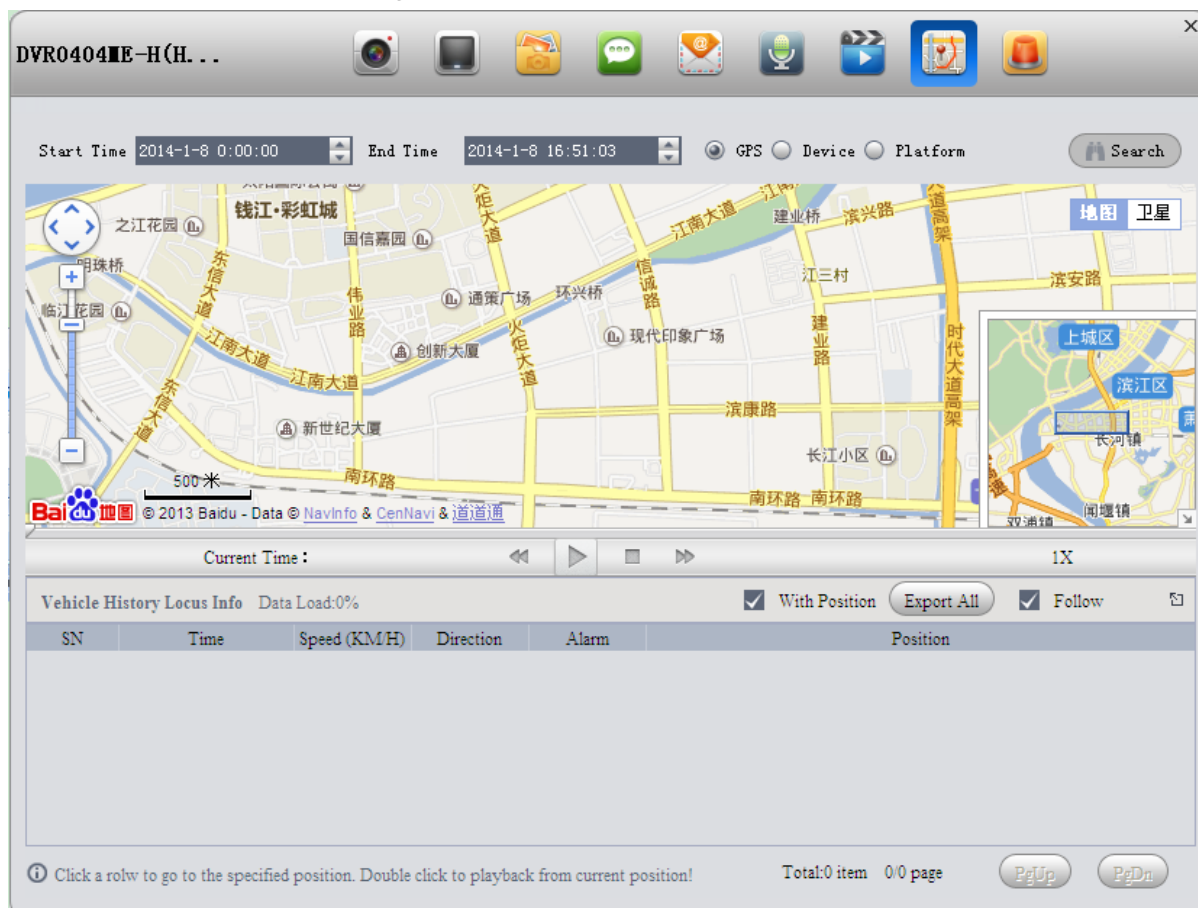



Figure 4- 8

4.1.11 Alarm Process

You can view alarm of current device via type, start time, process status, end time.

In key monitor interface, click on  or under Device tab, right-click on device and select alarm process to enter alarm interface. Search alarm via filter, see Figure 4- 9.

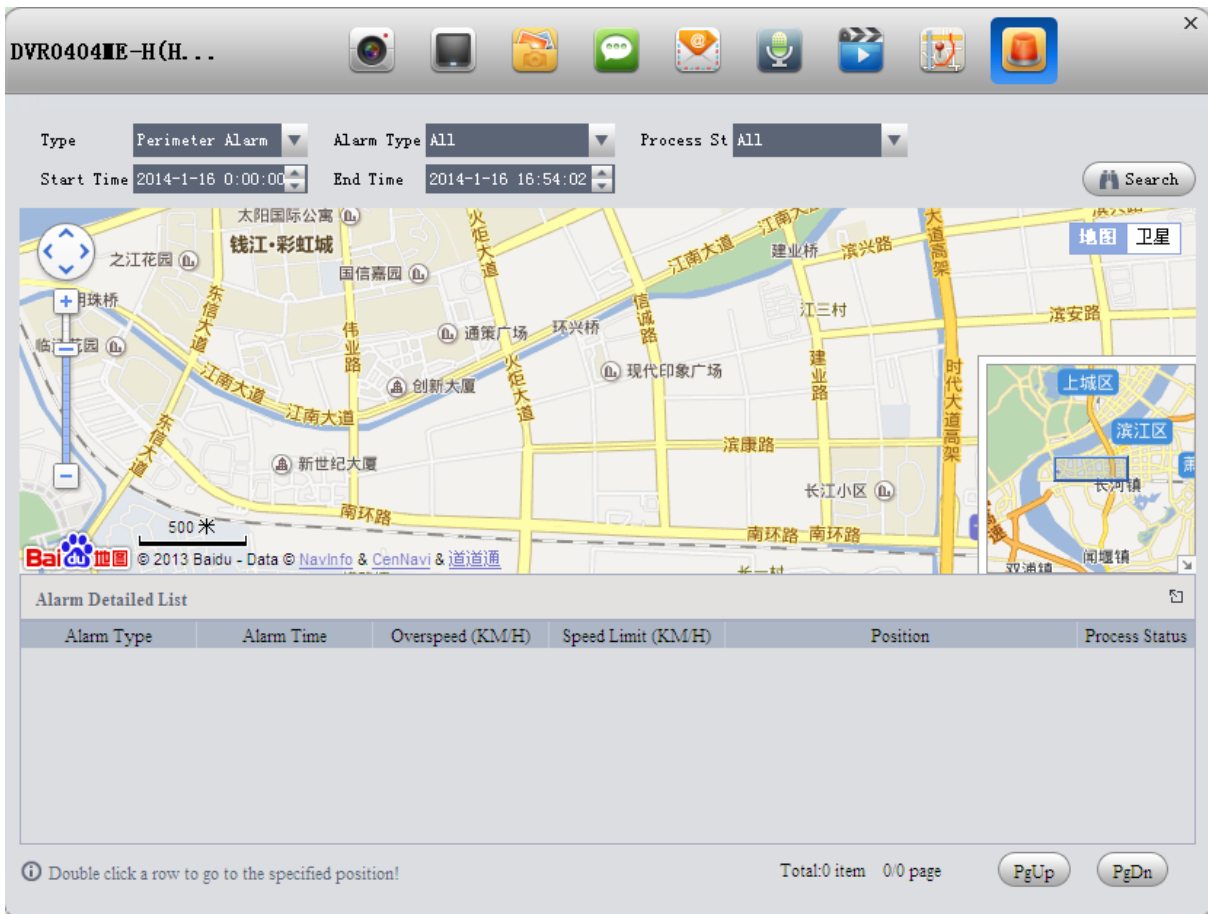


Figure 4- 9

You shall process alarm in Basic>Alarm Manager. Please refer to Ch 4.3.

4.1.12 Device Memo

You can right-click on device and select device memo to search memo of current device. To add memo, please refer to Ch 8.5.3 in DSS-M3.0 Manager User's Manual.

4.1.13 Report

You can view GPS module status list, offline device list, overspeed info list, perimeter alarm list, vehicle dispatching list, info access and etc.

Report	Note
GPS Module Status List	Current device GPS module status list statistics.
Offline Device List	Current device offline status list statistics.
Overspeed Info List	According to start time, end time and etc. , make current device overspeed statistics.
Perimeter Alarm List	According to start time, end time and etc. , make current device perimeter alarm list statistics.

Report	Note
Vehicle Dispatching List	Client upload picture and patrol result statistics. Please refer to Ch 8.5.5 in DSS-M3.0 Manager User's Manual.
Info Access	According to start time and end time, dispatch info.
Vehicle Transportation Statistics	According to start time, end time, statistics type and etc. make vehicle transportation statistics.
Overload Info List	According to start time, end time and item. Make overload statistics.
Emergency Info List	According to start time, end time and item. Make emergency statistics.
History GPS	Vehicle historical GPS info statistics, including longitude, latitude, speed, direction and etc. Click on position to position vehicle on map.

For example, make overload info statistics, you shall:

Step 1. Right-click on device and select Report>Overload Info List.

Step 2. Input search criteria.

Step 3. Click on Search.

Step 4. Click on position to position vehicle on map. You can click on Export to export result in PDF, Excel format report.

4.2 Preview

Via DSS-M Client, you can preview video.

4.2.1 Real Time Monitoring


DSS-M Client supports real time preview.

Note:

Before preview, you must enable authority of preview function on DSS-M Manager. Please refer to Ch 7.1 in DSS-M3.0 Manager User's Manual.

Preview operation is as follows:



Step 1. Click on  in Basic area. System displays Preview interface.

Step 2. Drag channel on the right to video window. Video window displays real time monitoring status as in Figure 4- 10.

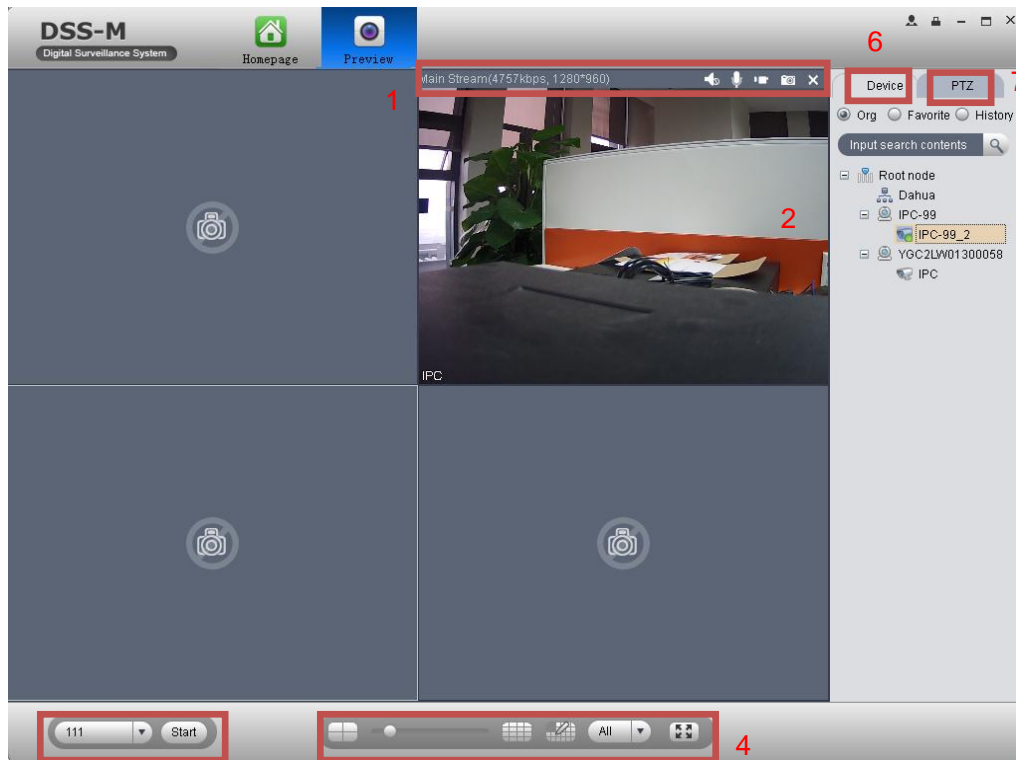


Figure 4- 10

No.	Parameter	Note
1	Bit Stream and Shortcut	<p>It displays bit stream info and operation shortcut. Shortcuts are as follows:</p> <ul style="list-style-type: none"> • : Turn on/off sound. • : Turn on/off MIC. • : Turn on/off record. • : Snapshot.
2	Video Window	<p>Real time preview. Double click on window to view in full screen.</p>
3	Window Task	<p>Select and execute task. Click on start to display tour plan of monitor video of device channel. Please refer to Ch 6.3 for adding task in Tour Task.</p>
4	Window Split Mode	<p>You can drag progress bar or click on to split window. There are ten modes ranging from 1-window to 36-window.</p> <p> 1:1 video aspect ratio.</p> <p> switch to full screen.</p>

Step 3. Right click on preview window, you can set current preview window as in Figure 4- 11.

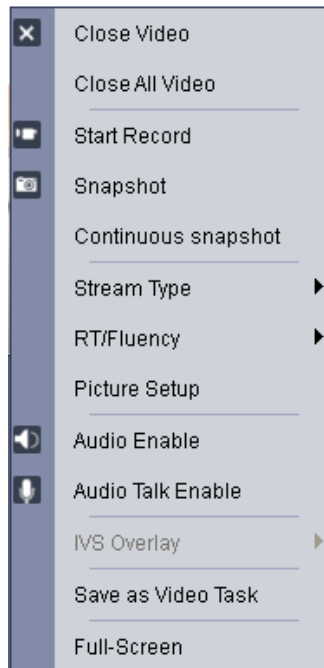





Figure 4- 11


Parameter	Note
Close Video	Close current video
Close All Video	Close all video
Start Record	Save current video as record file
Snapshot	Save image of current video as picture into folder (save one each period)
Continuous Snapshot	Save image of current video as picture into folder (save three each period)
Stream Type	Switch between main stream and sub stream
RT/Fluency	Switch between RT priority and fluency priority.
Audio Enable	Enable or disable audio of camera.
Audio Talk Enable	Enable or disable talk of device.
IVS Overlay	Set whether rule and object box in window.
Save as Video Task	Save layout of current window and video source as a tour task. After save it, you can preview it from the dropdown list in the lower left in Preview interface.
Full-Screen	It switched video to full screen. To exit full screen, you can double click or select exit full-screen.

4.2.2 Record

DSS-M Client supports real time preview and record at the same time.

Local record steps are as follows:


Step 1. Right click on window in Preview interface and select Start Record or click on  to record. When record starts,  becomes .

Step 2. When you want to end record, right click window and select Stop Record or click on  on the upper right to stop.

Default storage path of record is \DSSClient\Record\. You can go to Setup Manager>Local Setup>Playback/Download Config to edit Max Record Time and Store Record Path.

4.2.3 Snapshot

In Preview interface, you can refer to the following steps to snapshot for daily maintenance or alarm use.

Step 1. In Preview interface, right click on window and select Snapshot, or click on  on the upper-right to snapshot. System pops up a Snapshot box as in Figure 4- 12.

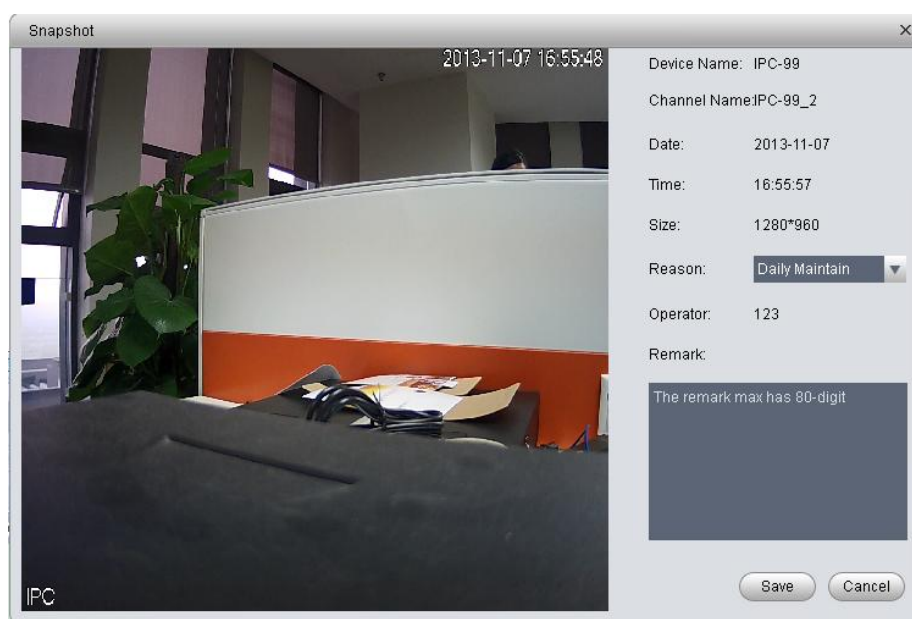


Figure 4- 12

Step 2. Input Reason and Remark.

Step 3. Click on Save. System says snapshot is successful.

You also can right click window and select Continuous snapshot to snap more than one picture.

Note:

System default snapshot quantity is 3, and default picture storage path is \project\DSS-003\DssClient\bin\Picture\. You can go to Setup Manager>Local Setup>Snapshot to edit Continuous Time, Continuous Interval and Snapshot Save Path.

4.2.4 PTZ

If device type is speed dome, then you can click on PTZ tab in the interface to set PTZ as in Figure 4- 13.






Note:

Before using PTZ, you must enable PTZ function on DSS-M3.0 Manager, please refer to Ch 7.1 in DSS-M3.0 Manager User's Manual.

To preview video from speed dome, click on PTZ tab on the upper-right.



Figure 4- 13

Parameter	Note
	<p>Click on  to lock current PTZ. Lock status is .</p> <p>Based on current user level, control over PTZ may vary.</p> <ul style="list-style-type: none"> ●When low-level user lock the PTZ, high-level user can click on  to unlock. ●When high-level user lock the PTZ, low-level user cannot unlock it until it is automatically unlocked. ●User of same level can unlock PTZ that lock by each other. <p>Note: PTZ default unlock time is 30s.</p>
	Control speed dome with mouse.
Direction key	It sets rotation direction of PTZ in eight directions as up, down, left, right, upper left, upper-right, lower-left, lower-right.

Parameter	Note
Step Length	It controls rotation speed of PTZ in 1~ 8 directions with different step lengths.
Zoom	It controls zoom of speed dome.
Focus	It adjusts focus.
Iris	It adjusts brightness.
Preset	Via setting preset, you can rotate camera toward position of the preset.
Tour	Via setting tour, you can tour camera among different presets. Note: This function does not require support from speed dome, but speed dome must support preset.
Aux	It adjusts light, wiper, PTZ menu, auto rotation, aux 1, aux 2 and IR light.

- Preset

Via setting preset, you can rotate camera toward position of preset. To add preset:

Step 1. Click on direction key on PTZ to rotate camera.

Step 2. Click on Preset tab.

Step 3. Click on Add. System pops up Preset Setup interface.

Step 4. Input SN and Name as in Figure 4- 14.

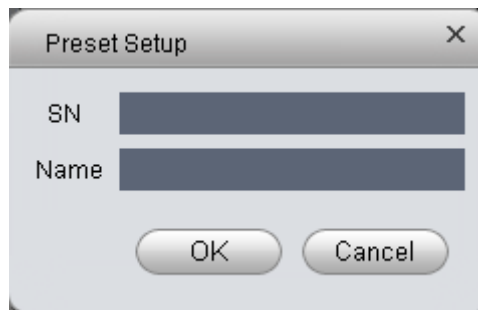


Figure 4- 14

Step 5. Click on OK.

When you need to rotate the camera toward designated position, you just need to select direction from the dropdown list, and click on Go.

- Tour

Via set Tour, you can make camera tour among different presets.

Note: There must be at least two presets for tour.

To add tour:

Step 1. In PTZ interface, click on Tour tab.

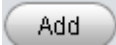

Step 2. Click on Add. System pops up a new tour box.

Step 3. Input name and SN. In All Presets area on the left, select preset, and click on Add.

System adds presets on the left to list on the right as in Figure 4- 15.



Figure 4- 15

-  Select preset on the left, click on this button, presets will be added into list on the right.
-  Select preset on the right, click on this button, presets will be deleted from the list on the right.
- Modify Stay Time, click on Stay Time column of presets on the right to modify it. It ranges from 3s ~ 6000s.

Step 4. Click on OK. System will say it is successfully saved.

When you want to start tour, in Tour tab, select tour from dropdown list and click on Start.


4.3 Alarm Manager

Note:

Before searching alarm, you must config alarm scheme. Please refer to Ch 6.2.

You can refer to the following steps to set alarm scheme.



Step 1. Click on  in Basic area. System displays Alarm Manager interface as in Figure 4- 16.

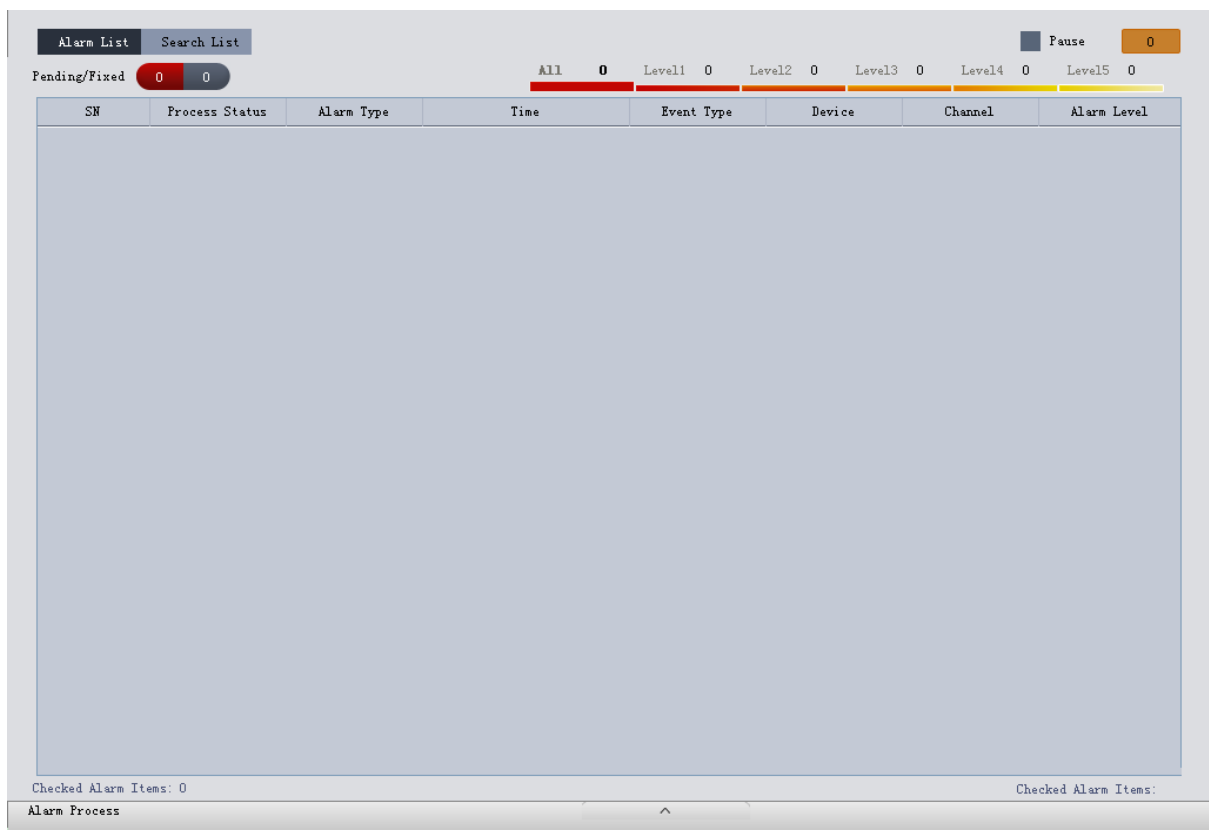


Figure 4- 16

Step 2. You can process alarm info. Double click on alarm in list, system pops up alarm detail interface.

Step 3. You can search current alarm and video and process the alarm. Process status includes processed, unprocessed, pending, error and ignored. Processed alarm is displayed in status column.

Step 4. You also can search detailed device channel alarm in Search List interface via alarm time, start time and end time.

4.4 Playback

DSS-M Client supports playback record in front-end device and in center, and download record files.

Note:

Before playback and downloading of record, you must add record plan on DSS-M3.0 Manager, and enable authority of playback and downloading for role of current user. Please refer to Ch 8.1 and 7.1 in DSS-M3.0 Manager User's Manual.

4.4.1 Playback

You can search different channel, different time, and different types of record, and play the record.


To play record:



Step 1. In Basic area, click on [Playback](#). System displays playback interface.

Step 2. In the upper-right corner, select device channel.

Step 3. Select time to search.

Step 4. Click on . Record time is displayed in lower progress bar.

Step 5. Click on  in the lower-left to select record type.

Step 6. Click on  to play. See Figure 4- 17.

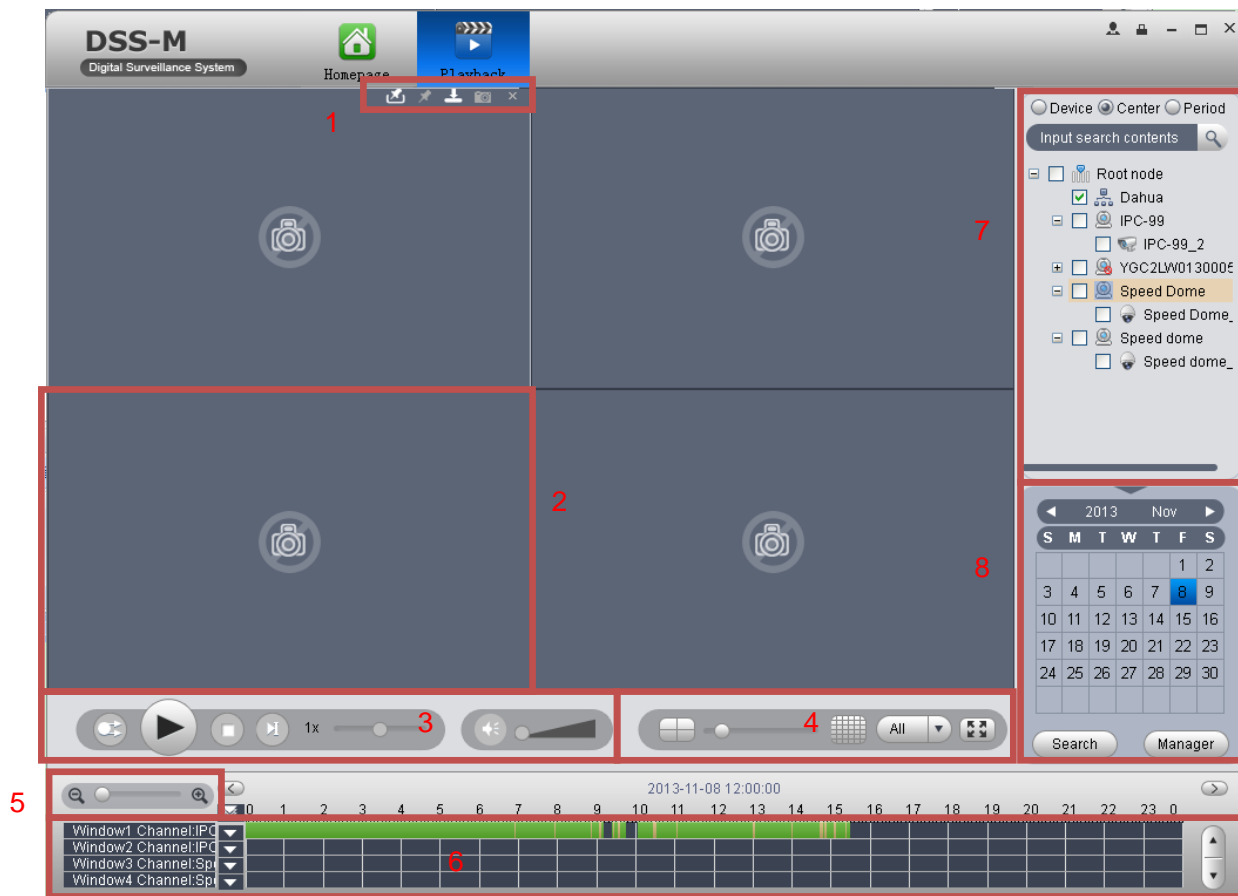
















Figure 4- 17

No.	Interface	Note
1	Quick Operation Bar	You can select: <ul style="list-style-type: none"> : Mark Manager , Mark current record , Download record in the channel , Snapshot , Close record of current channel
2	Record Playback Window	Window of record playback.

No.	Interface	Note
3	Play Tool Bar	<p>You can select parameter:</p> <ul style="list-style-type: none"> •  , Window sync playback button. When it is in this status, tool bar works for all windows. •  , When it is in this status, tool bar works for currently selected window only. •  , Pause or play. •  , Stop play •  , Go to next frame •  , Control speed of playback •  It adjusts volume.
4	Window Display Mode	It sets split mode, aspect ratio, and full screen of window. You can drag progress bar and select from ten modes ranging from 1 to 36 windows.
5	Time Progress Bar	It adjust time axis of zoom in/out.
6	Record Playback Type and Time Progress Bar	<ul style="list-style-type: none"> • It is to select playback record type and time axis. • Click on  to select record type.
7	Device List	It displays device and channel
8	Date	Select date of record.

4.4.2 Download

During record playback, you can download designated file to local. To download record:

Step 1. Click on  in the upper-left corner in playback window. System pops up an File Download box as in Figure 4- 18.

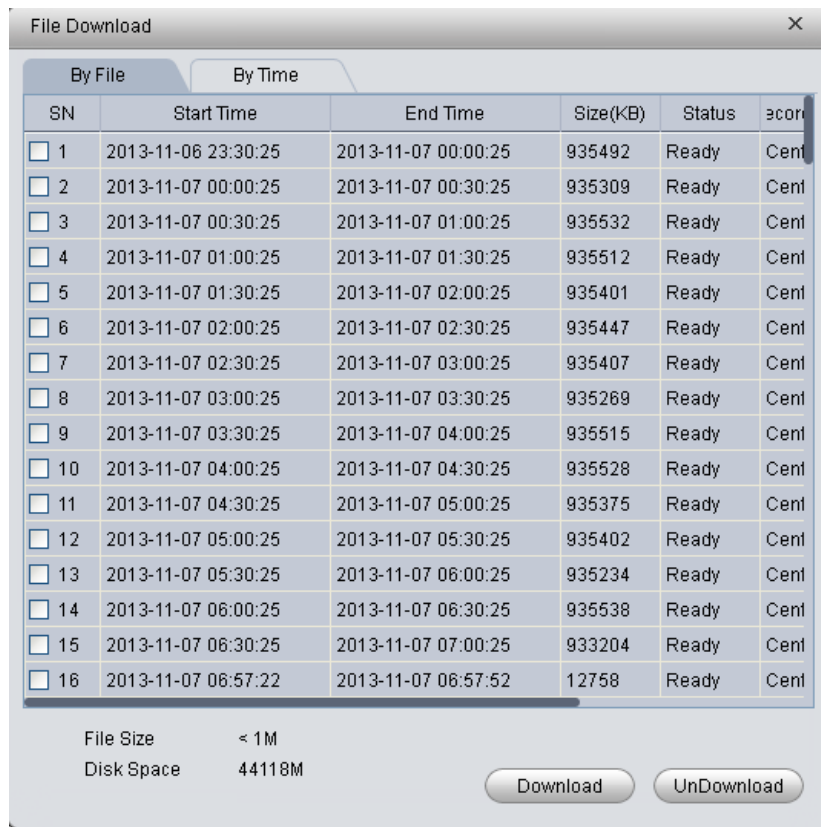


Figure 4- 18

Step 2. Check file to download.

Step 3. Click on Download. Click on Manage in Playback interface. System displays Manage interface as in Figure 4- 19.

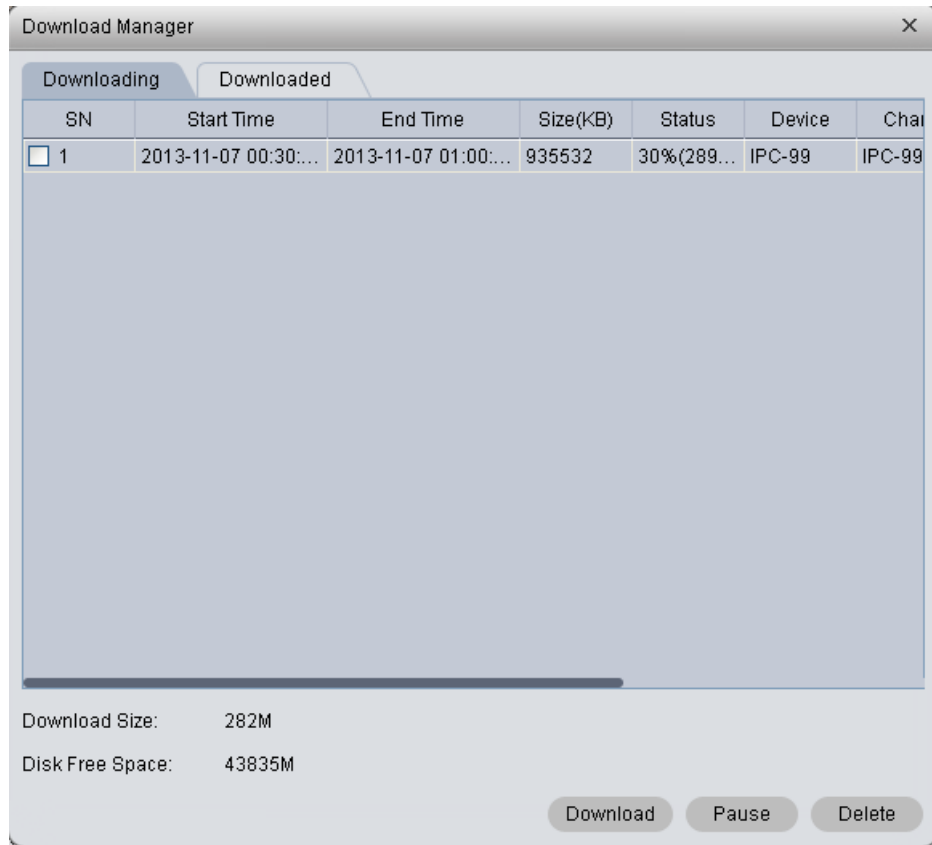


Figure 4- 19

You can view progress of downloading file, and check downloading file to pause or delete it.

5 Extension

5.1 TV Wall

Via selecting TV wall schemes and bind video with TV wall to output video to wall.

Note:

- **Before configuring TV wall function, you need to add TV wall scheme in DSS-M Manager.**
- **You must add authority of TV wall to current role in DSS-M Manager.**
- **Please refer to Ch 8.2 and Ch 7.1 in DSS-M3.0 Manager User's Manual.**



Step 1. Click on  in Basic area.

System displays TV Wall interface, see Figure 5- 1.



Figure 5- 1

Step 2. Click on Select TV Wall dropdown list, select corresponding TV wall and check Apply now or not.

- If select Apply Now, system will automatically output video to TV wall.
- If not select Apply Now, system will not automatically output video to TV wall.

Step 3. Drag device in right list to window of TV wall. See Figure 5- 2.



Figure 5- 2

No.	Interface	Note
1	Window Mode	If there is group screen, then you can open the group screen via window mode.
2	Window Display Mode	Select a screen in TV wall, via adjusting progress bar to split window into 1, 4, 9, 16, 36 windows. If the screen does not support split, you cannot split it.
3	Clear Screen	Clear screen operation
4	Screen and Channel Info	View binging info of screen and channel.

Step 4. Click on Save Task. System pops up Save box.

Step 5. Input Task Name, click on OK.

Step 6. Click on TV Wall to complete.

Note:

- If you completed TV wall configuration, you can select task in dropdown list of Task Name, and click on TV Wall.
- If you want to view added task, you click on Manager. In the pop-up interface, you can view, add, modify and delete task.

5.2 Audio Talk

Via audio talk, you can talk to front-end device and broadcast.

Note:

Before using audio talk function, you must add authority of audio talk to role of current user in DSS-M3.0 Manager. Please refer to Ch 7.1 in DSS-M3.0 Manager User's Manual.

5.2.1 Audio Talk

Audio talk allows Client to talk to a single front-end device.




Step 1. Click on  in Basic area. System displays broadcast interface, see Figure 5- 3.




Figure 5- 3

Step 2. Click on Audio Talk tab in the upper-right. System shows Audio Talk interface. Select a device to talk.

Note:

Audio talk is valid to device only, not to channel.



Step 3. Click on . System shows interface as in Figure 5- 4.

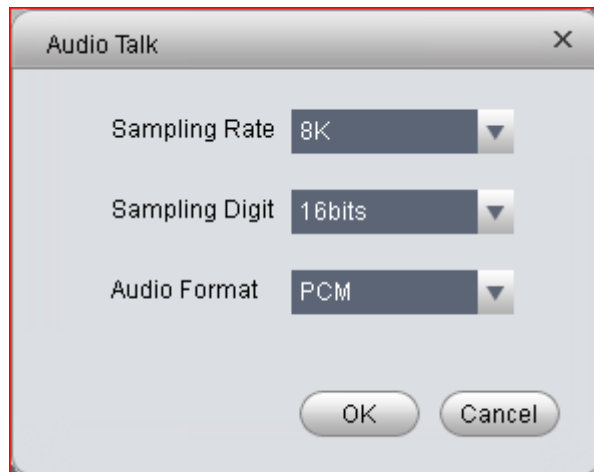


Figure 5- 4

Step 4. Set Sampling Rate, Sampling Digit, and Audio Format, click on OK. If config match device, system will inform you that audio talk is successfully enabled, see Figure 5- 5.

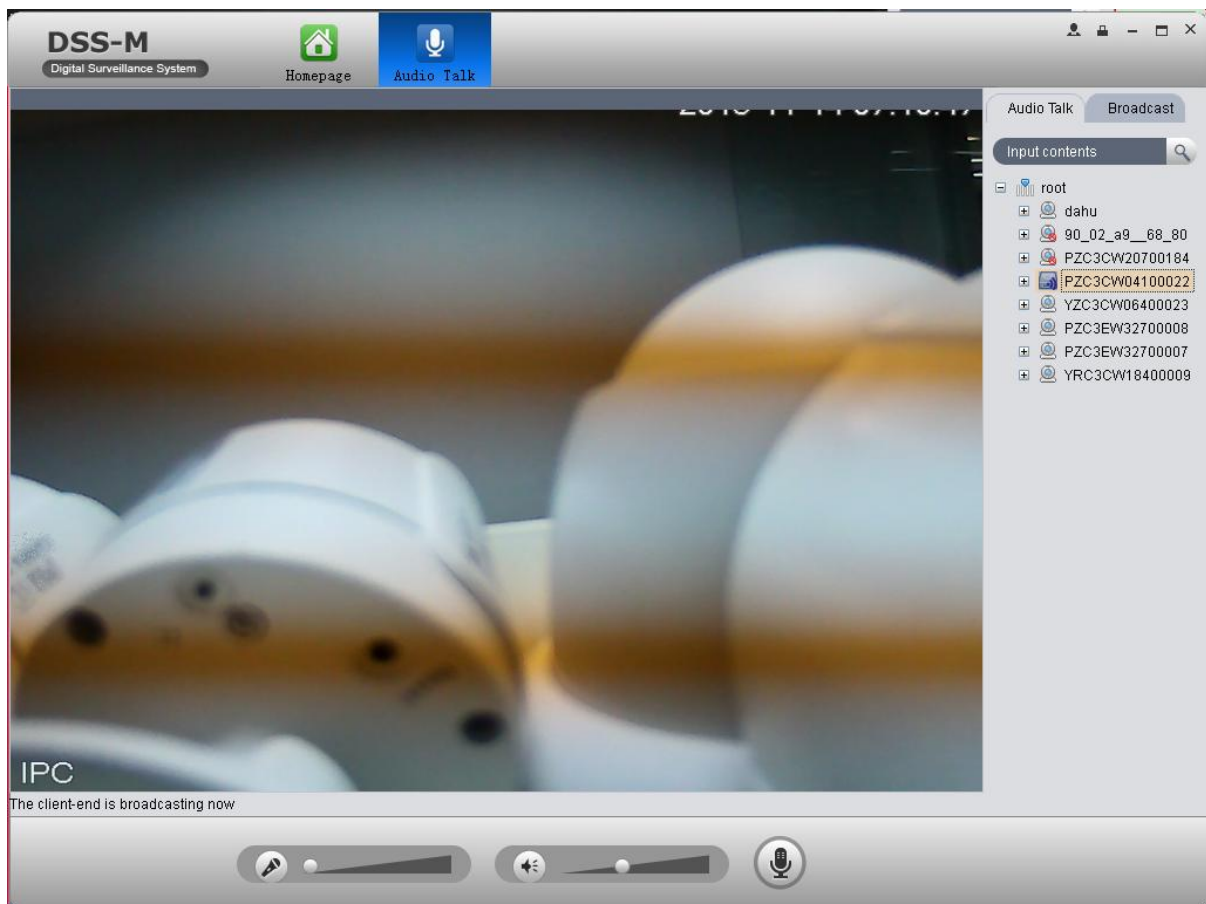


Figure 5- 5

Note:

If config do not match device, system will inform you that failed to enable audio talk, and show recommended parameter. You can config based on the recommended parameter.

5.3 Broadcast

Broadcast allows the Client to broadcast with multiple front-end devices.

Step 1. Click on Broadcast tab in Audio Talk interface. System shows Broadcast interface.

Step 2. Select multiple devices on the right. The selected devices will be displayed in broadcast list.

Step 3. Click on . System displays Broadcast setup interface, see Figure 5- 6.

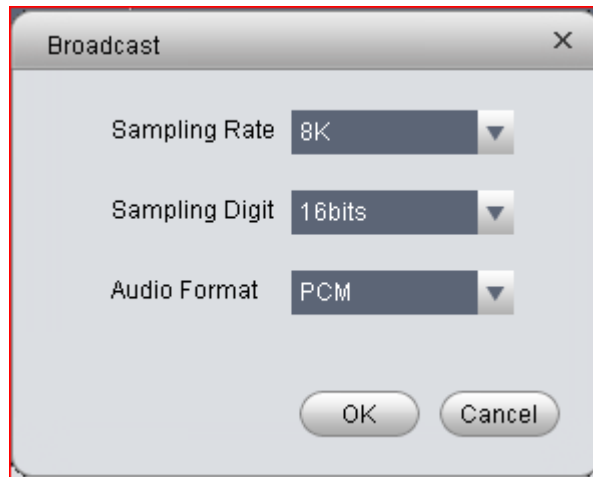


Figure 5- 6

Step 4. Set Sampling Rate, Sampling Digit and Audio Format.

Step 5. Click on OK.

- If config match device, then you enable broadcast successfully and device in list will show enable status, see Figure 5- 7.



Figure 5- 7

- If config do not match device, system will inform you that failed to enable broadcast, and show recommended parameter. You can config based on the recommended parameter.

6 Setup Manager

6.1 Local Config

You can



Click on  in Setup Manager area. System enters Local Setup interface. See Figure 6- 1.

The screenshot shows the 'Local Setup' interface with the following sections:

- General:**
 - Boot up Video: 1-window (slider to 36-window)
 - Connection Type: TCP
 - Bit Stream Type: Main Stream (radio buttons for Default and Self-adaptive)
 - Video Buffer Time: 1500 (40-6000ms)
 - Lock Screen Time: 0 (0-9999m)
 - Displayed Alarm No.: 1000 (1-1000)
 - Checkboxes: Display alarm overlay, Last Photo Of Tour, Auto Start Tour On Login, Auto Set Talk Parame, Check Time All Net, Display Video Info, Show PTZ Button, Display error info.
- Screenshot Config:**
 - Background Snapshot:
 - Continuous Snapshot: 3 (2-10 Fix)
 - space Of Continuity: 2 (More Than 1 Second)
 - Store Picture Path: C:\Program Files\ISSMClient\Picture\
- Playback/Download Config:**
 - Max Record Time: 30 (1-30 min)
 - Store Record Path: C:\Program Files\ISSMClient\Record\
- SMS Config:**
 - SMS Mobile SN: [redacted] (15 Bit Of Numbers)
 - Common Prot: 1
 - Common Property: 9600, N, 8, 1

Buttons: Default, Save

Figure 6- 1


Parameter	Note
Boot up Video	Set preview, playback and others' default display modes.
Bit Stream Type	Default bit stream when open video
Displayed Alarm No.	Max alarms in Alarm Manager.
Auto Set Talk Parameter	During talk, system can auto match device sampling frequency, sampling bit, and audio format.
Check Time All Net	Respond sync time or not: <ul style="list-style-type: none"> ● Check: sync server time by Client. Not check: Do not sync server time.
Display Video	Whether to display video bit rate, resolution and etc. in monitoring window or

Parameter	Note
Info	not.
Display Error Info	When system error or user error occurs, display error info or not
Background Snapshot	Check it to eliminate pop up box when you snapshot
Continuous Snapshot	Times of snapshot at once. Default is 3 times.
Space of Continuity	Interval of continuous snapshot. Default is 2 seconds.
Max Record Time	Max length of record. Default is 30 min.
SMS Mobile SN	SN of sms modem.
Common Port	Common port of sms modem.
Common Property	Common property of sms modem.

6.2 Alarm Scheme

You can refer to the following steps to set alarm scheme.



Step 1. Click on  in Setup Manager area. System displays Alarm Scheme interface as in Figure 6- 2.

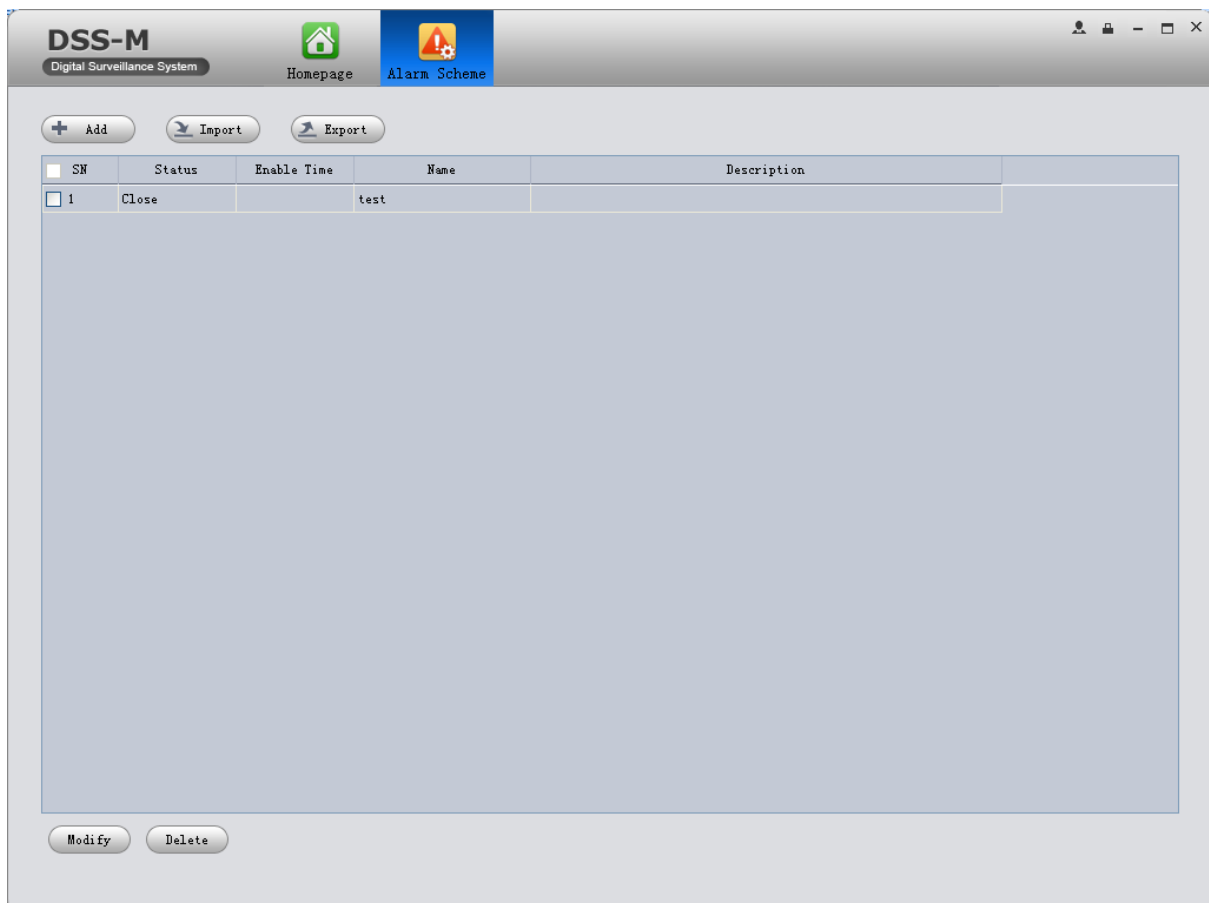


Figure 6- 2

Step 2. Click on New. System displays scheme info setup interface.

Step 3. Input Scheme Name, Description, Time, Audio and Others as in Figure 6- 3.

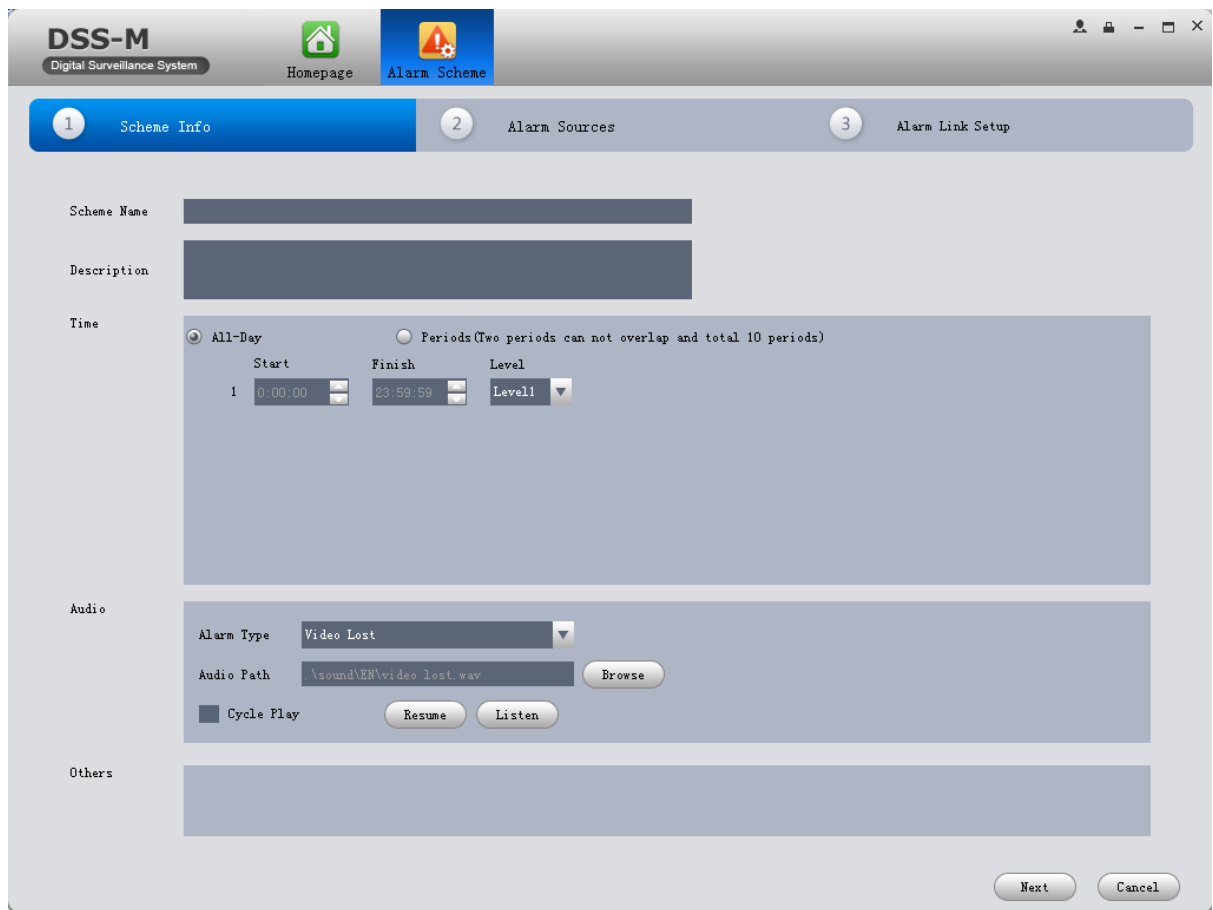



Figure 6- 3

Parameter	Note
Scheme Name	Set name of alarm scheme.
Description	Optional. It is the description of scheme you are adding.
Time	Set period of arming, and select level. You can select: <ul style="list-style-type: none"> All-Day: All day is arming period. Periods: Certain periods in a day are arming period. You can add period via and delete period via .
Audio	Set type of alarm. You can set: <ul style="list-style-type: none"> Browse: Select path of audio file by click on Browse. Cycle: By selecting this cycle, alarm sound will be looped. Listen: You can listen to the selected sound. Resume: System can restore default setting of non-customizable alarm type.
Others	If check Map flashed when an alarm occurred, then when alarm occurs, it will flash on E-map.

Step 4. Click on Next.

Step 5. Set Alarm Source.

- 1) Select channel on the left, and in Alarm Type area, select alarm type to be armed.

2) Click on . System will add alarm source to list on the right as in Figure 6- 4.

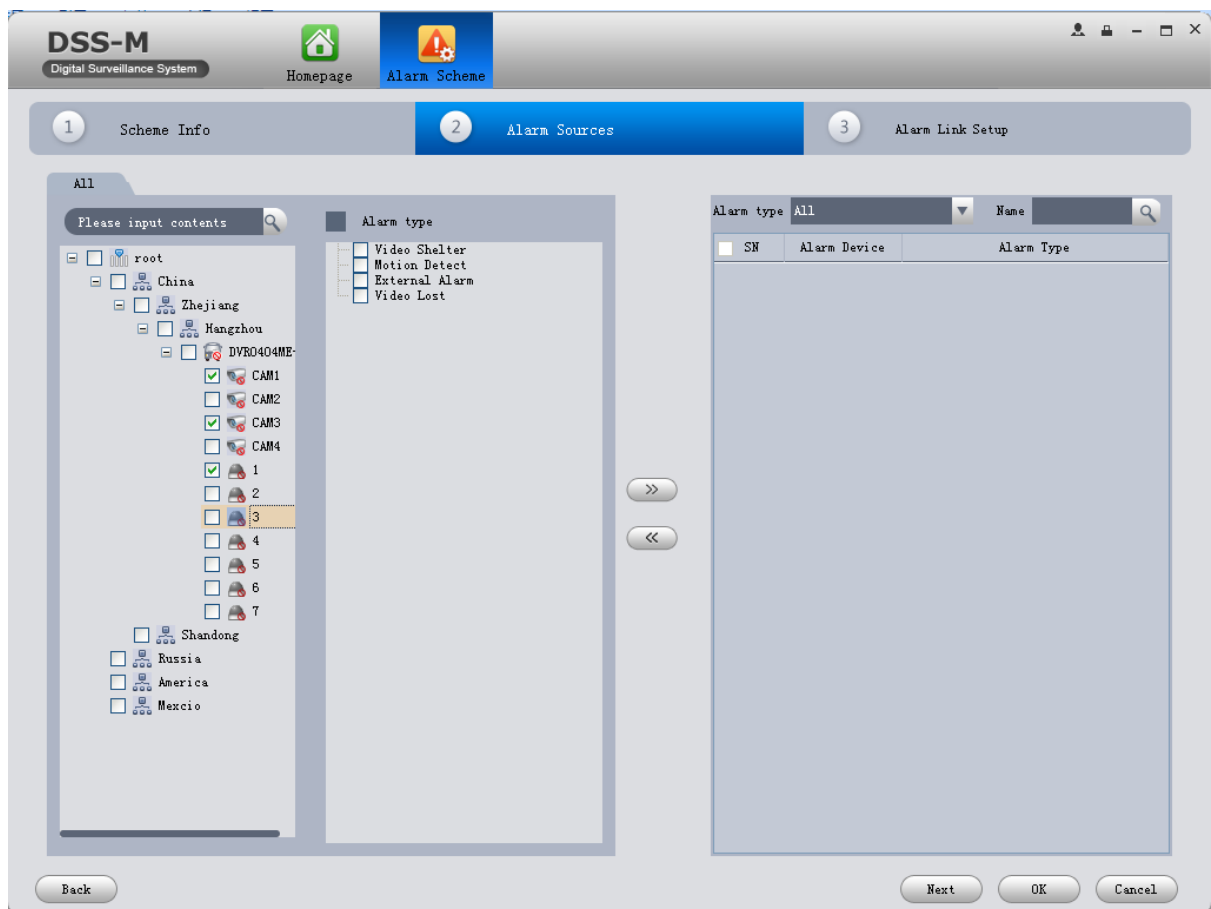


Figure 6- 4

Note:

If you want to delete alarm source, you shall select alarm source on the right, and click on


 to remove.

Step 6. Click on Next.

Step 7. Set Link Video

1) Select alarm source on the left.

2) Select video channel under Alarm Link Setup tab.

3) Click on  to add selected link video to area on the right as in Figure 6- 5.

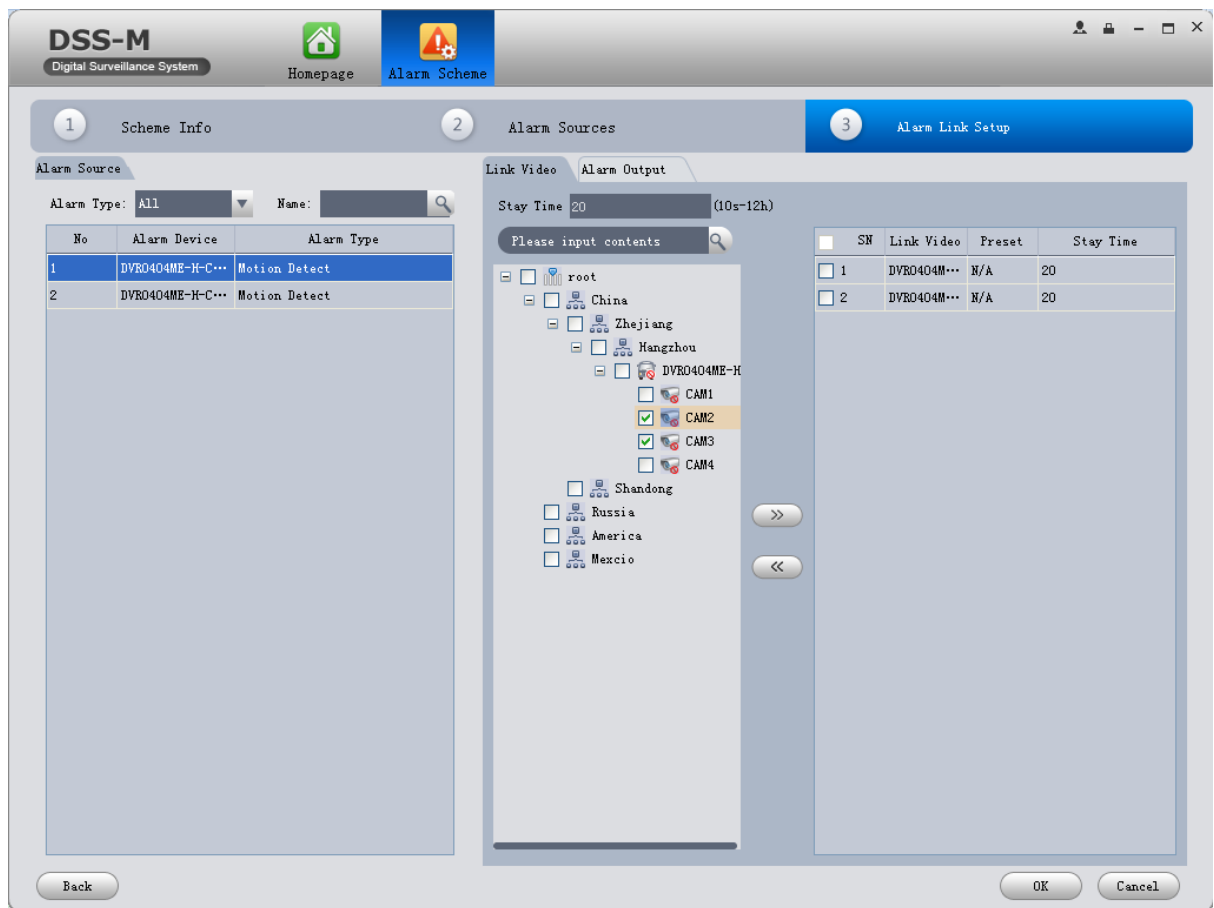



Figure 6- 5

4) Select alarm output device under Alarm Output tab.

5) Click on  to add alarm output to the right.

Step 8. Click on OK. System displays added alarm scheme as in Figure 6- 6.

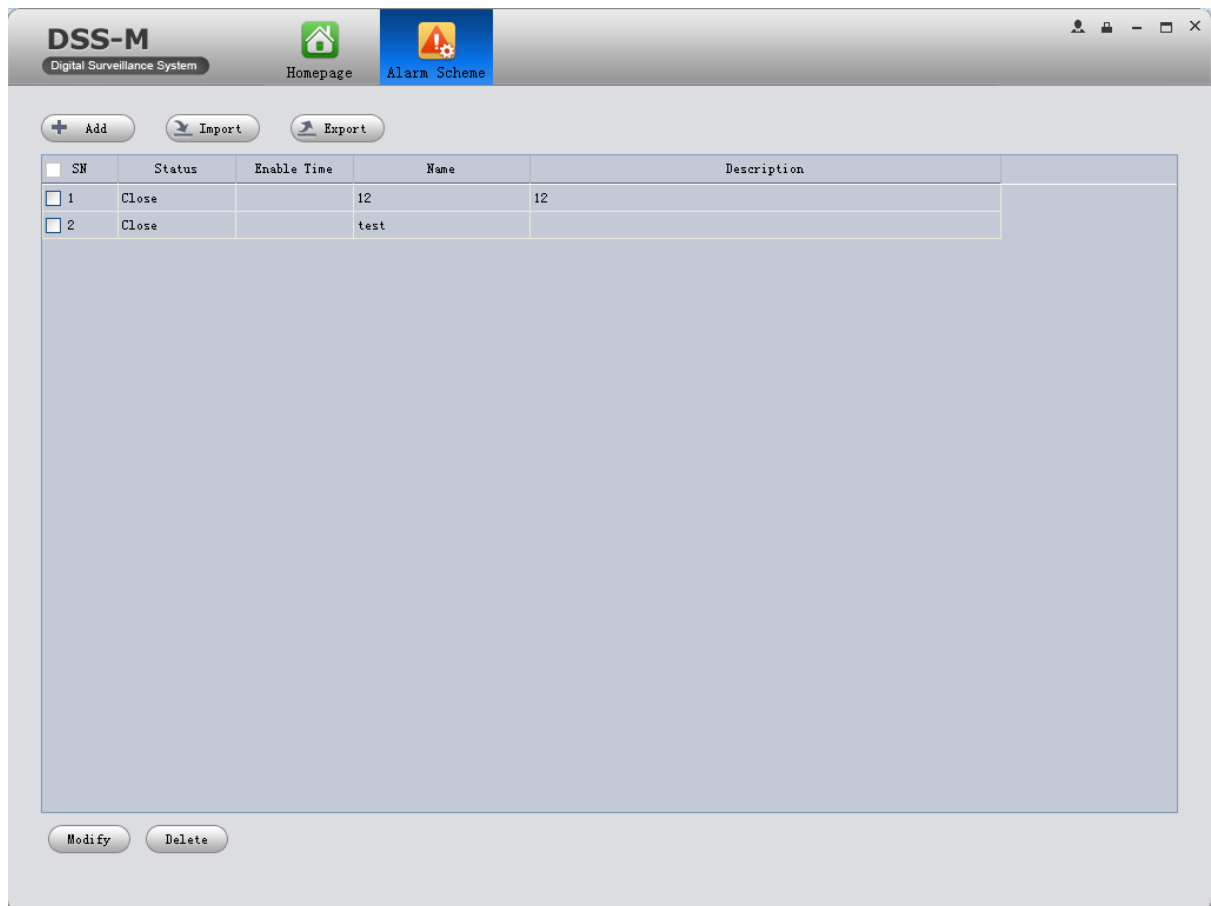
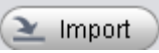



Figure 6- 6


Note:

- You shall turn on status in task list. In scheme time, alarm will be displayed in alarm manager.
- After you add alarm scheme, click on operation bar, and close status turn to open. Click on open can enable alarm scheme and click on Enable Time to select time to enable.
- Click on  to import old schemes. Click on  to export scheme.
- Click on Delete button in the lower left to delete existing schemes.

6.3 Tour Task

You can set tour task to achieve tour over several windows. To set tour task:



Step 1. Click on  in Setup Manager area. System displays Tour Task interface.

Step 2. Click on .

Step 3. Input Task Name, Description and select Window No.

Step 4. Drag designated device on the right to left window for setup as in Figure 6- 7.

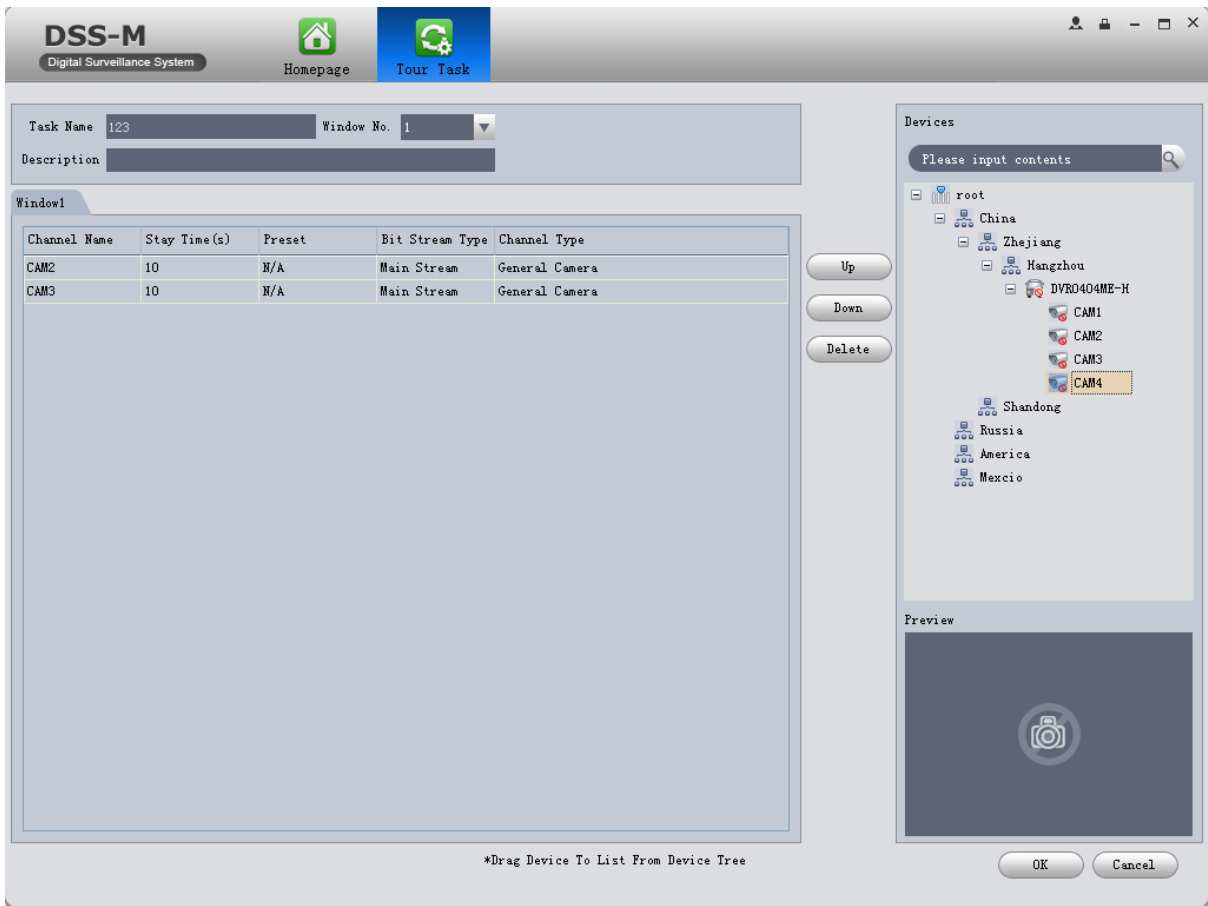
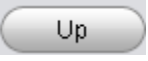
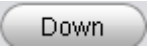



Figure 6- 7

- Click on ,  to adjust sequence, or click on  to delete added channel on the left.

Step 5. Click on OK.

See Figure 6- 8.

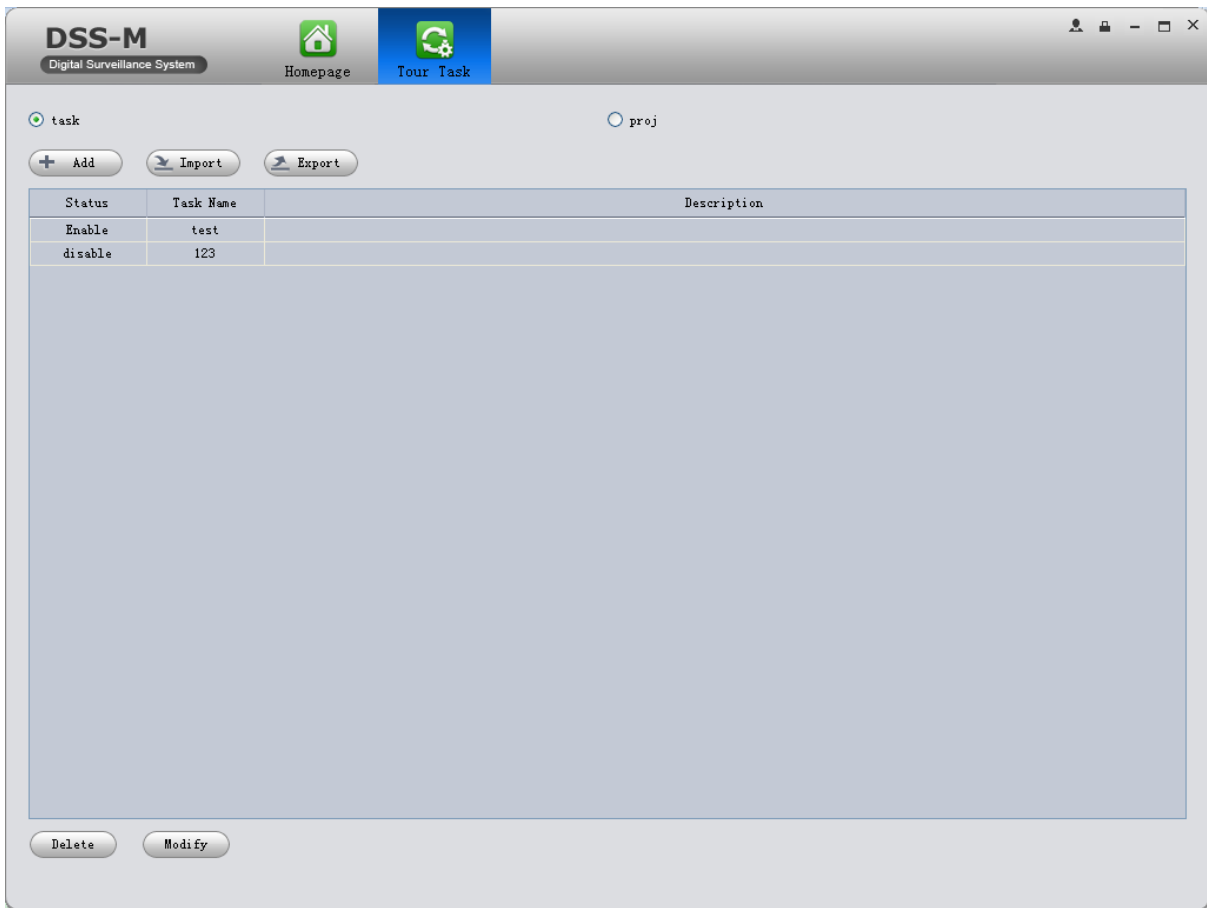




Figure 6- 8

Note:

- You can click on Import and Export in Tour Task interface to import/export added task.
- You also can edit and delete added task by clicking on  and .

To enable tour task, there are two ways:

- In Tour Task interface, you must turn on tour task. You can then view monitoring status of tour channel in Preview interface.

6.4 Local Date

You can search saved local data, as saved record and snapshot in Local Data interface.



Step 1. Click on . System pops up Local Data interface.

Step 2. On the right, select device channel.

Step 3. Config start time and end time. Select data type (picture, video) or use advanced search.

Step 4. Click on Search. See Figure 6- 9.

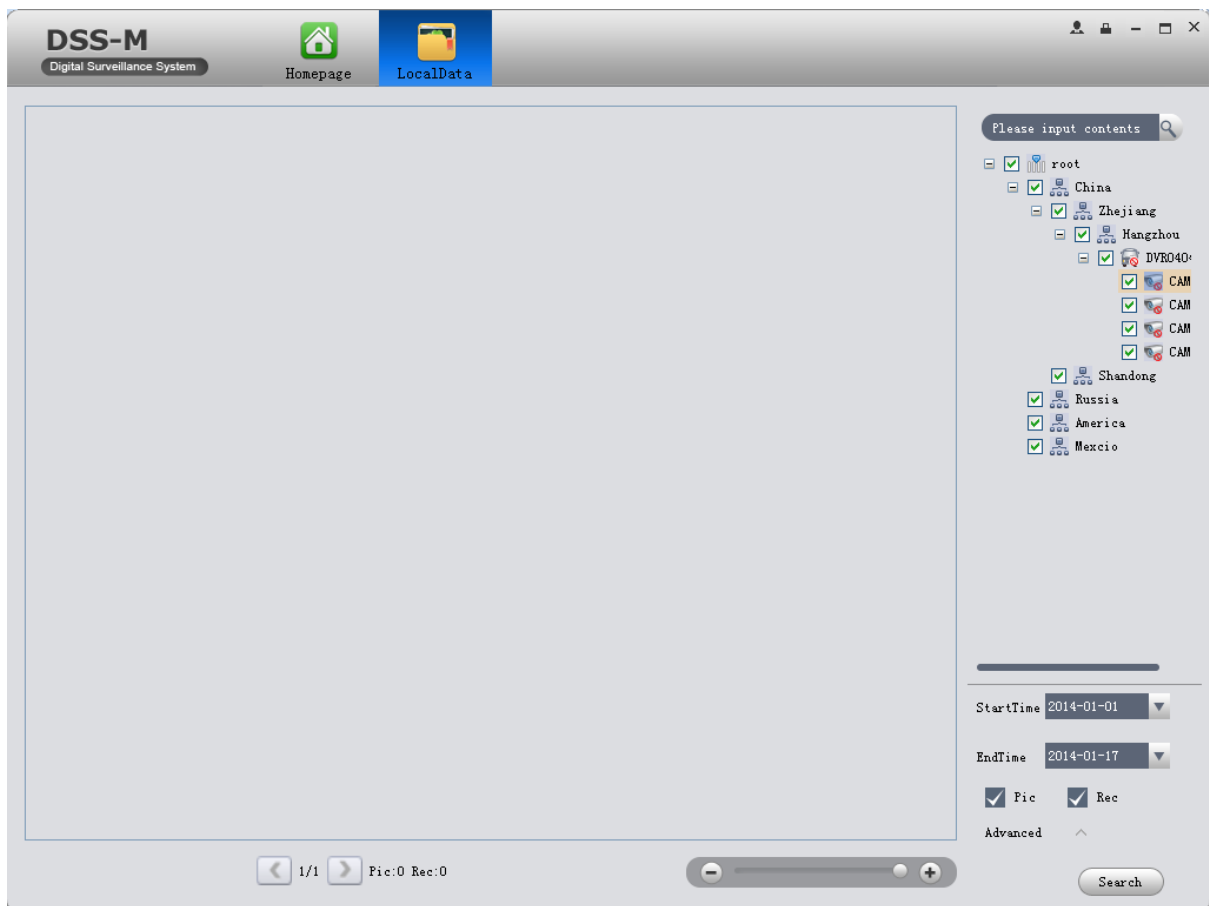


Figure 6- 9

Note: If the selected channel does not have local video, system will display No local record. If the selected channel does not have local picture, system will display No local picture.

Note:

- This manual is for reference only. Slight difference may be found in the user interface.
- All the designs and software here are subject to change without prior written notice.
- All trademarks and registered trademarks are the properties of their respective owners.
- If there is any uncertainty or controversy, please refer to the final explanation of us.
- Please visit our website or contact your local service engineer for more information.
-