

22-inch Combo Digital Video Recorder Quick Start Guide

Version 1.0

Table of Contents

1	Hardware Installation and Connection.....	6
1.1	Check Unpacked Combo DVR.....	6
1.2	About Front Panel and Rear Panel.....	6
1.3	Device Installation.....	6
1.4	HDD Installation.....	6
1.5	Front Panel, Side Panel and Rear Panel.....	8
1.6	Connection Sample.....	9
1.7	Alarm Input and Output Connection.....	9
1.7.1	Alarm Input and Output Details.....	9
1.7.2	Alarm Input Port.....	10
1.7.3	Alarm Output Port.....	11
2	Overview of Navigation and Controls.....	12
2.1	Login, Logout & Main Menu.....	12
2.1.1	Login.....	12
2.1.2	Main Menu.....	12
2.1.3	Shutdown.....	13
2.1.4	Auto Resume after Power Failure.....	13
2.1.5	Replace Button Battery.....	13
2.2	Live Viewing.....	13
2.3	Schedule.....	14
2.4	Manual Record.....	14
2.5	Encode.....	15
2.5.1	Snapshot.....	16
2.5.2	Image FTP.....	17
2.6	Search and Playback.....	17
2.7	Network Setup.....	20
2.8	Pan/Tilt/Zoom.....	21

2.8.1	PTZ Setup	21
2.8.2	PTZ Operation	21
2.8.3	3D Intelligent Positioning Key	22
3	Web Operation.....	24
3.1	Network Connection	24
3.2	Login	24
3.3	Main Window	24
4	Appendix Toxic or Hazardous Materials or Elements	26

Welcome

Thank you for purchasing our 22-inch combo DVR!

This quick start guide will help you become familiar with our combo DVR in a very short time.

Here you can find hardware installation, cable connection information and general operations such as system setup, record, search, backup, alarm setup, PTZ operation, also here you can find web operation instruction.

Before installation and operation, please read the following safeguard and warning carefully!

Important Safeguards and Warnings

1 . Electrical safety

All installation and operation here should conform to your local electrical safety codes. We assume no liability or responsibility for all the fires or electrical shock caused by improper handling or installation.

2 . Transportation security

Heavy stress, violent vibration or water splash are not allowed during transportation, storage and installation.

3 . Installation

Keep upwards. Handle with care.

Do not apply power to the combo DVR before completing installation.

Do not place objects on the combo DVR.

4 . Qualified engineers needed

All the examination and repair work should be done by the qualified service engineers.

We are not liable for any problems caused by unauthorized modifications or attempted repair.

5 . Environment

This series product working temperature ranges from 0°C to 40°C.

The combo DVR should be installed in a cool, dry place away from direct sunlight, inflammable, explosive substances and etc.

Please unplug the power cable in case there is strong wind or lightning.

6. Accessories

Be sure to use all the accessories recommended by manufacturer.

Before installation, please open the package and check all the components are included.

Contact your local retailer ASAP if something is broken in your package.

7. About the LCD

During the installation, do not push or squeeze the LCD or its rim; it may result in LCD damage.

During the operation or storage, please avoid the hard object to scuff the screen.

Please keep the LCD clean. Use the soft cloth to clean regularly. Do not use gasoline, alcohol or other chemical reagent to clean the screen.

Do not allow the LCD video standstill for a long time; it may result in permanent damage.

7. Lithium battery

Improper battery use may result in fire, explosion, or personal injury!

When replace the battery, please make sure you are using the same model!

1 Hardware Installation and Connection

Note: All the installation and operations here should conform to your local electric safety rules.

1.1 Check Unpacked Combo DVR

When you receive the combo DVR from the forwarding agent, please check whether there is any visible damage. The protective materials used for the package of the combo DVR can protect most accidental clashes during transportation. Then you can open the box to check the accessories.

Please check the items in accordance with the list on the warranty card. Finally you can remove the protective film of the combo DVR.

Note

Remote control is not a standard accessory and it is not included in the accessory bag.

1.2 About Front Panel and Rear Panel

The model in the front panel is very important; please check according to your purchase order. The label in the rear panel is very important too. Usually we need you to represent the serial number when we provide the service after sales.

1.3 Device Installation

The series product supports two installation modes: desktop (default)/ wall-mount.

Please contact your local retailer to purchase wall-mount accessories.

1.4 HDD Installation

This series 22-inch combo DVR has only one SATA HDD.

You can refer to the Appendix in the user's manual for recommended HDD brand. You can select the capacity as your requirement.

Please follow the instructions below to install the HDD.



1. Loosen the two screws of the HDD cover.

2. Remove the HDD cover from the rear panel of the device.



3. Connect the power cable, HDD cable to the corresponding port of HDD.



4. Put the HDD cover back to the HDD slot and then fix the two screws.



5. Line up the four hole of the HDD cover to the HDD.



6. Use the four screws to secure the HDD and the HDD cover together. .



7. Put the HDD cover back to the HDD slot and then fix the two screws.



8. The HDD installation completed.

1.5 Front Panel, Side Panel and Rear Panel

The front panel and side panel is shown as in Figure 1-1

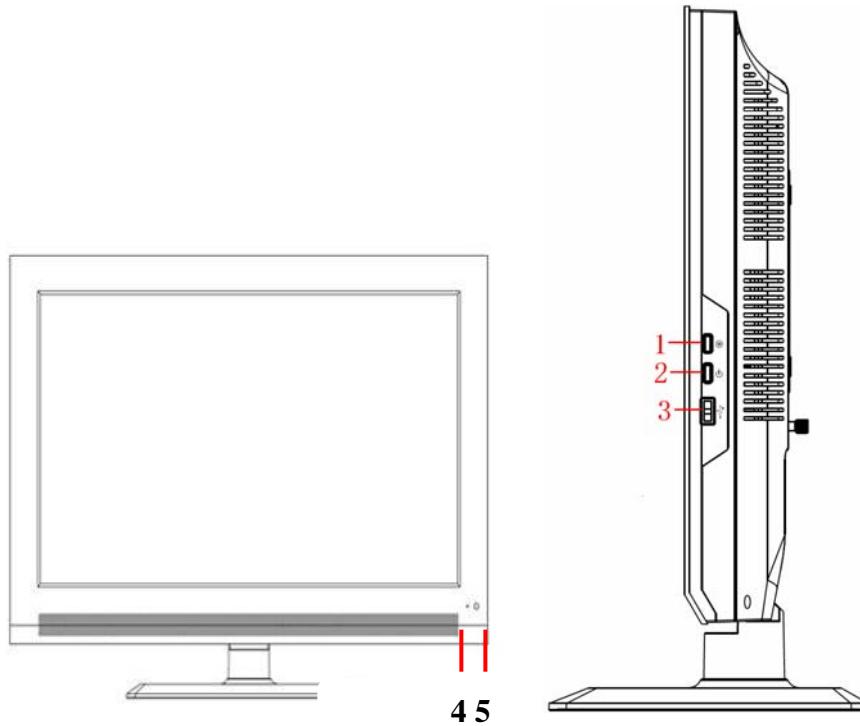


Figure 1-1

Please refer to the following sheet for detailed information.

SN	Function
1	M button
2	Power button
3	USB port
4	Power indication light
5	Remote control receiver to receive the signal from the remote control.

The rear panel is shown as below. See Figure 1-2.

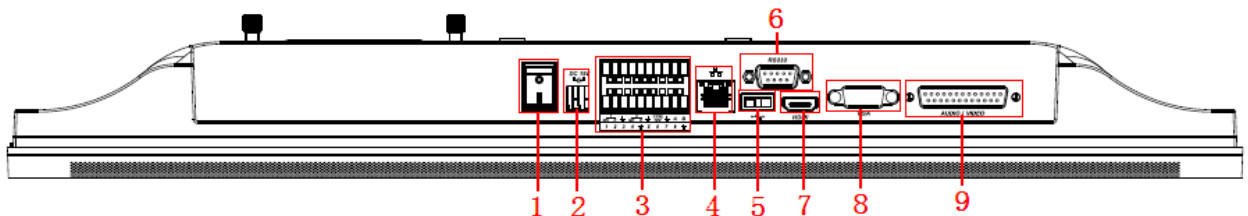


Figure 1-2

Please refer to the following sheet for rear panel button information.

SN	Function
1	Power button
2	Power socket
3	Alarm input, alarm output, RS485 port.
4	Network port
5	USB port

6	RS-232 port
7	HDMI port
8	PC input
9	Video CVBS input, audio CVBS input, Video CVBS output, audio CVBS output.

1.6 Connection Sample

Please refer to Figure 1-3 for connection sample.

The following figure is based on the 8-channel series product.

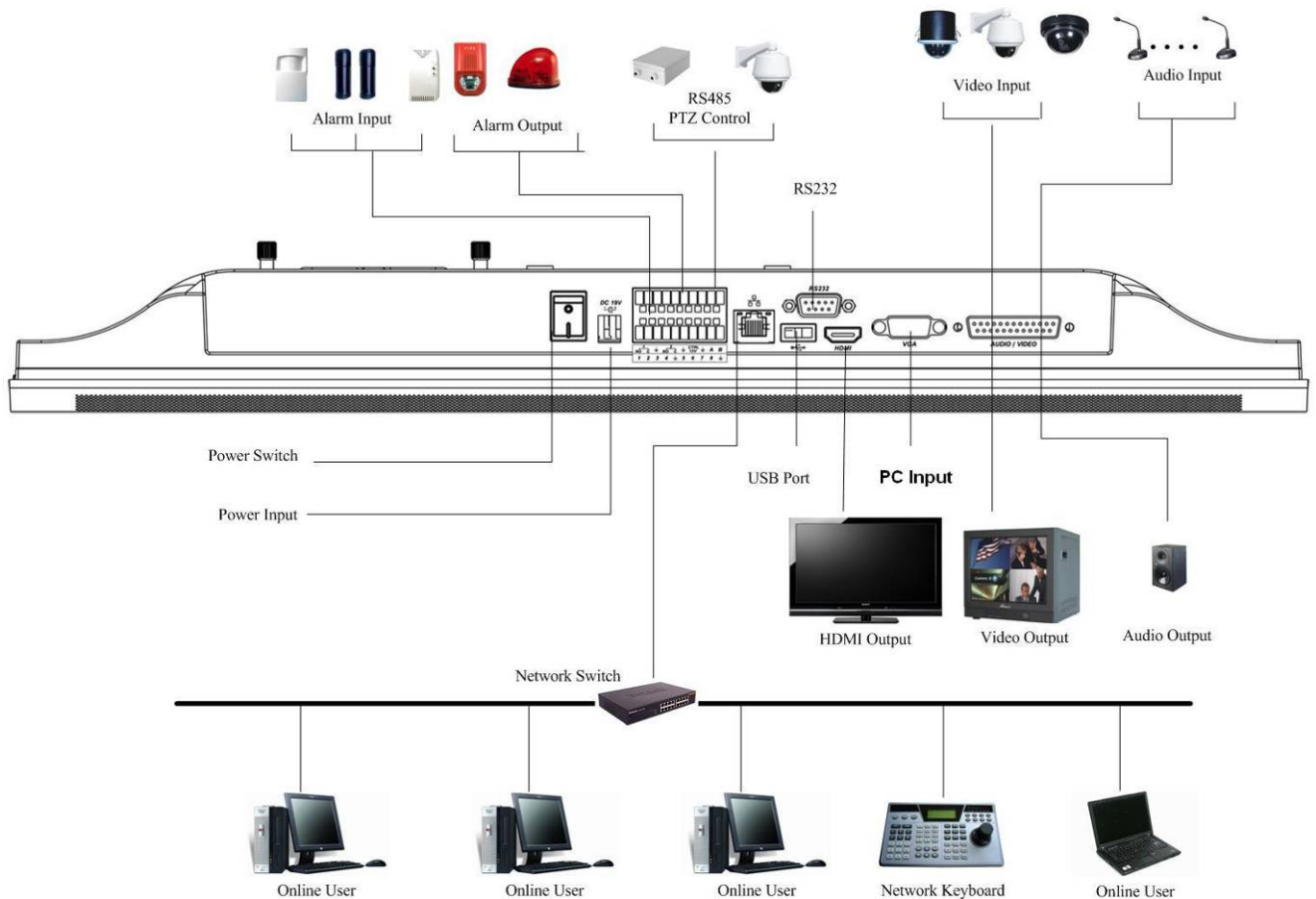


Figure 1-3

1.7 Alarm Input and Output Connection

There are two alarm input types for you to select: normal open (NO) and normal close (NC).

1.7.1 Alarm Input and Output Details

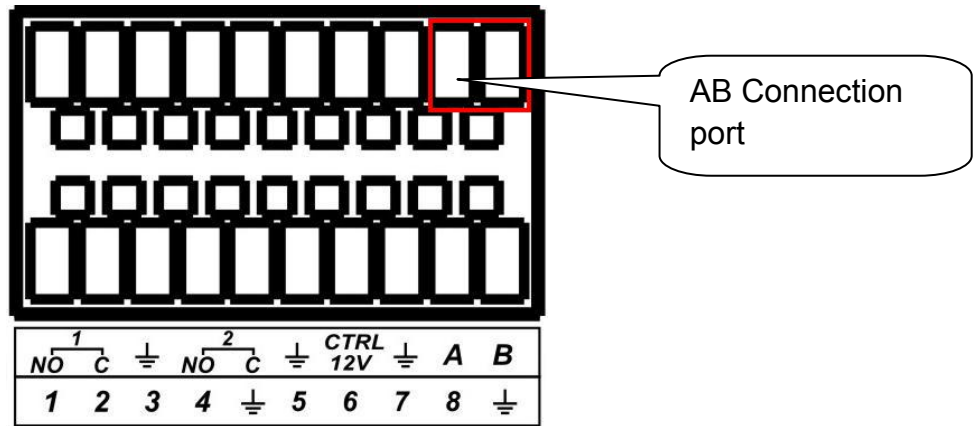


Figure 1-4

You can refer to the following sheet and Figure 1-4 for alarm input and output information.

Parameter	Grounding Alarm
	Ground line
1, 2, 3, 4. 5,6,7,8	Alarm input 1 to alarm input 8. It becomes valid in low voltage.
1-NO C, 2-NO C	Two groups of normal open activation output (on-off).
CTRL 12V	It is to control the power output. Please shut down the power of the device when you disable the alarm.
A/B	RS485 communication port. They are used to control devices such as PTZ. Please parallel connect 120Ω between A/B cables if there are too many PTZ decoders.

1.7.2 Alarm Input Port

Please refer to the following sheet for more information.

- Normal open or Normal close type.
- Please parallel connect COM end and GND end of the alarm detector (Provide external power to the alarm detector).
- Please parallel connect the Ground of the combo DVR and the ground of the alarm detector.
- Please connect the NC port of the alarm sensor to the combo DVR alarm input(ALARM)
- Use the same ground with that of combo DVR if you use external power to the alarm device.

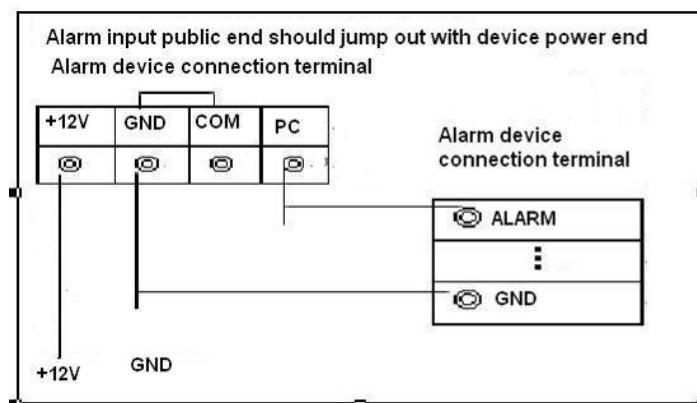


Figure 1-5

1.7.3 Alarm Output Port

- 3-channel relay alarm output (NO contact). Provide external power to external alarm device.
- To avoid overloading, please read relay parameters sheet in the *User's Manual* carefully.
- RS485 A/B cable is for the A/B cable of the PTZ decoder.

2 Overview of Navigation and Controls

Before operation, please make sure you have properly installed HDDs and all the cable connections.

2.1 Login, Logout & Main Menu

2.1.1 Login


After system booted up, default video display is in multiple-window mode.

Click Enter or left click mouse, you can see the login interface. See Figure 2-1.

System consists of four accounts:

- **Username:** admin. **Password:** admin. (administrator, local and network)
- **Username:** 888888. **Password:** 888888. (administrator, local only)
- **Username:** 666666. **Passwords:** 666666(Lower authority user who can only monitor, playback, backup and etc.)
- **Username:** default. **Password:** default(hidden user)

You can use USB mouse, front panel, remote control (not included in the accessory bag) or

keyboard to input. About input method: Click  to switch between numeral, English character (small/capitalized) and denotation.

Note:

For security reason, please modify password after you first login.

Within 30 minutes, three times login failure will result in system alarm and five times login failure will result in account lock!



Figure 2-1

2.1.2 Main Menu

After you logged in, the system main menu is shown as below. See Figure 2-2.

There are total six icons: search, information, setting, backup, advanced and shutdown.

You can move the cursor to highlight the icon, and then double click mouse to enter the sub-menu.

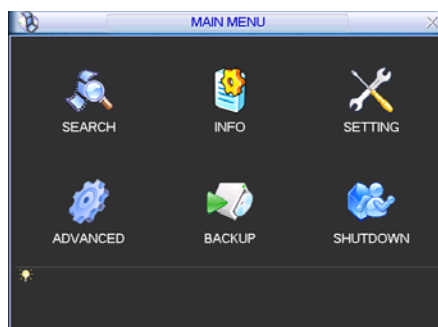


Figure 2-2

2.1.3 Shutdown

Important

Please open the HDD cover and then cut off the power before you replace the HDD!

There are two ways for you to shutdown the device.

The first one is from menu option (**recommended**):

In the main menu, click shutdown button, you can see an interface is shown as below. See Figure 2-3.



Figure 2-3

There are several options for you. See Figure 2-4.

Please select the shutdown item to turn off the combo DVR.

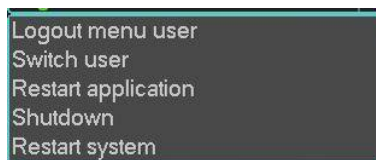


Figure 2-4

The other way is to press power button on the side panel to turn off the device.

2.1.4 Auto Resume after Power Failure

The system can automatically backup video and resume previous working status after power failure.

2.1.5 Replace Button Battery

Please make sure to use the same battery model if possible.


Please contact your local retailer before you replace the battery.

We recommend replace battery regularly (such as one-year) to guarantee system time accuracy.

Before replacement, please save the system setup, otherwise, you may lose the data completely!

2.2 Live Viewing

After you logged in, the system is in live viewing mode by default. You can see system date, time and channel name. If you want to change system date and time, you can refer to general settings (Main Menu->Setting->General). If you want to modify the channel name, please refer to the display settings (Main Menu->Setting->Display)

1		Recording status	3		Video loss
2		Motion detection	4		Camera lock

2.3 Schedule


Note:

You need to have proper rights to implement the following operations. Please make sure the HDDs have been properly installed.

After the system booted up, it is in default 24-hour regular mode. You can set record type and time in schedule interface.

In the main menu, from Setting to Schedule, you can go to schedule menu. See Figure 2-5. There are total six periods.

- Channel: Please select the channel number first. You can select “all” if you want to set for the whole channels.
- Week day: There are eight options: ranges from Saturday to Sunday and all.
- Pre-record: System can pre-record the video before the event occurs into the file. The value ranges from 1 to 30 seconds depending on the bit stream.
- Snapshot: You can enable this function to snapshot image when alarm occurs.
- Record types: There are four types: regular, motion detection (MD), Alarm, MD & alarm.

Please highlight icon  to select the corresponding function. After completing all the setups please click save button, system goes back to the previous menu.

At the bottom of the menu, there are color bars for your reference. Green color stands for regular recording, yellow color stands for motion detection and red color stands for alarm recording. The white means the MD and alarm record is valid. Once you have set to record when the MD and alarm occurs, system will not record neither motion detect occurs nor the alarm occurs.



Figure 2-5

2.4 Manual Record

Note:

Please make sure you have the record operation right and you have properly installed the formatted HDD.

You can right click mouse or in the main menu, from Advanced->Manual Record to go to record interface.

There are three statuses: schedule/manual/stop. Highlight icon “○” to select corresponding channel. See Figure 2-6.

- Manual: The highest priority. After manual setup, all selected channels will begin ordinary recording.
- Schedule: Channel records as you have set in recording setup (Main Menu->Setting->Schedule)
- Stop: All channels stop recording.



Figure 2-6

2.5 Encode

Encode interface is shown as in Figure 2-7.

- Channel: Select the channel you want.
- Compression: System supports H.264.
- Resolution: System supports various resolutions, you can select from the dropdown list. For this model, main stream supports D1/CIF/QCIF. Please note the resolution may vary due to different channels. The extra stream supports QCIF only.
- Frame rate: It ranges from 1f/s to 25f/s in NTSC mode and 1f/s to 30f/s in PAL mode.

Note:

For the 8-ch (16-ch) series 22-inch combo DVR:

- ✧ If the 1-ch (or the 9-ch) resolution is D1 (PAL: 25f/s. NTSC: 30f/s), the rest channels (2-8-ch or 10-16-ch) support CIF/QCIF.
- ✧ If the 1-ch (or the 9-ch) resolution is D1 (PAL: ≤ 6f/s, NTSC: ≤7f/s), the rest channels (2-8-channel or 10-16-channel) support D1 (PAL: ≤6f/s. NTSC: ≤7f/s)/CIF/QCIF.
- Bit rate type: system supports two types: CBR and VBR. In VBR mode, you can set video quality.
- Quality: There are six levels ranging from 1 to 6. The sixth level has the highest image quality.
- Video/audio: you can enable or disable the video/audio. Please note the video is enabled for main stream by default. For extra stream, please enable video first and then enable audio.
- Snapshot: Click snapshot button, you can see it contains the four items: mode/image size/image quality/snapshot frequency. Please refer to chapter 2.3.3 for detailed information.

Please highlight icon  to select the corresponding function.

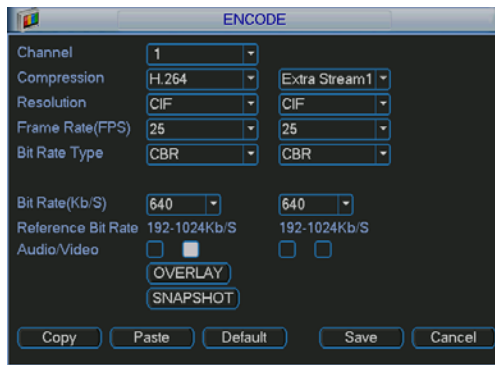


Figure 2-7

2.5.1 Snapshot

2.5.1.1 Schedule Snapshot

In Encode interface, click snapshot button to input snapshot mode, size, quality and frequency.

In General interface please input upload interval.

In Schedule interface, please enable snapshot function.

Please refer to the following figure for detailed information. See Figure 2-8.



Figure 2-8

2.5.1.2 Activation Snapshot

Please follow the steps listed below to enable the activation snapshot function. After you enabled this function, system can snapshot when the corresponding alarm occurred.

- In Encode interface, click snapshot button to input snapshot mode, size, quality and frequency.
- In General interface please input upload interval.
- In Detect interface please enable snapshot function for specified channels. Or in Alarm interface please enable snapshot function for specified channels.

Please refer to the following figure for detailed information. See Figure 2-9.

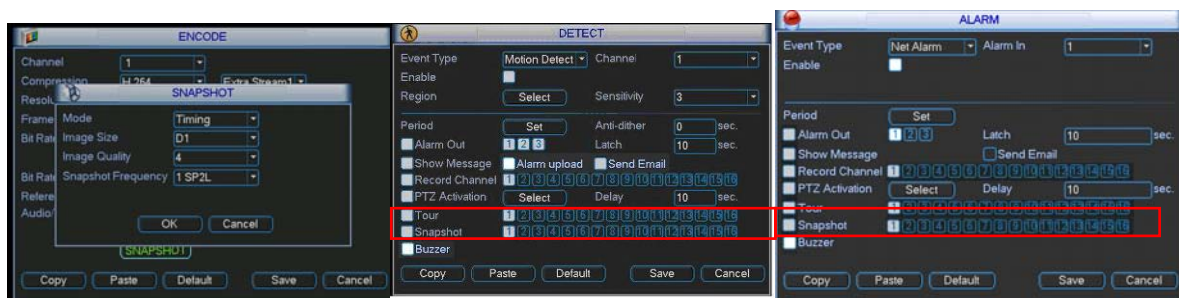


Figure 2-9

2.5.1.3 Priority

Please note the activation snapshot has the higher priority than schedule snapshot. If you have enabled these two types at the same time, system can activate the activation snapshot when alarm occurs, and otherwise system just operates the schedule snapshot.

2.5.2 Image FTP

In Network interface, you can set FTP server information. Please enable FTP function and then click save button. See Figure 2-10. Please refer to the *User's Manual* included in the resource CD for detailed information.

Please boot up corresponding FTP server.

Please enable schedule snapshot or activation snapshot (Chapter 2.3.3) and then system can upload the image file to the FTP server.

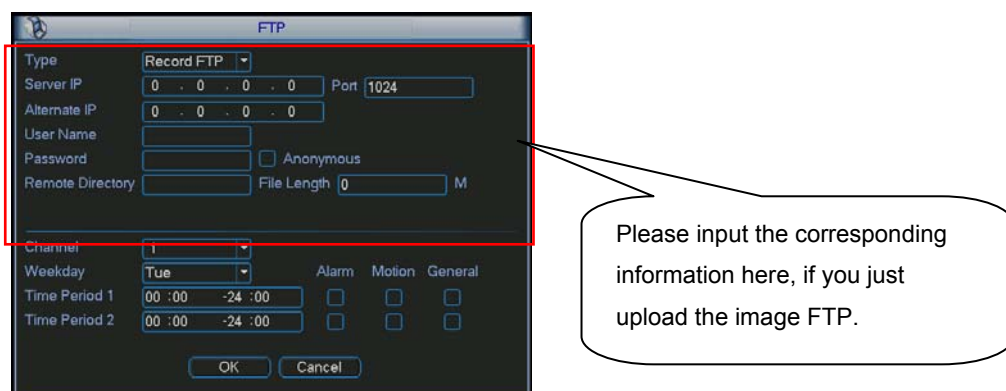


Figure 2-10

2.6 Search and Playback

Click search button in the main menu, search interface is shown as below. See Figure 2-11.

Usually there are three file types:

- R: Regular recording file.
- A: External alarm recording file.
- M: Motion detection recording file

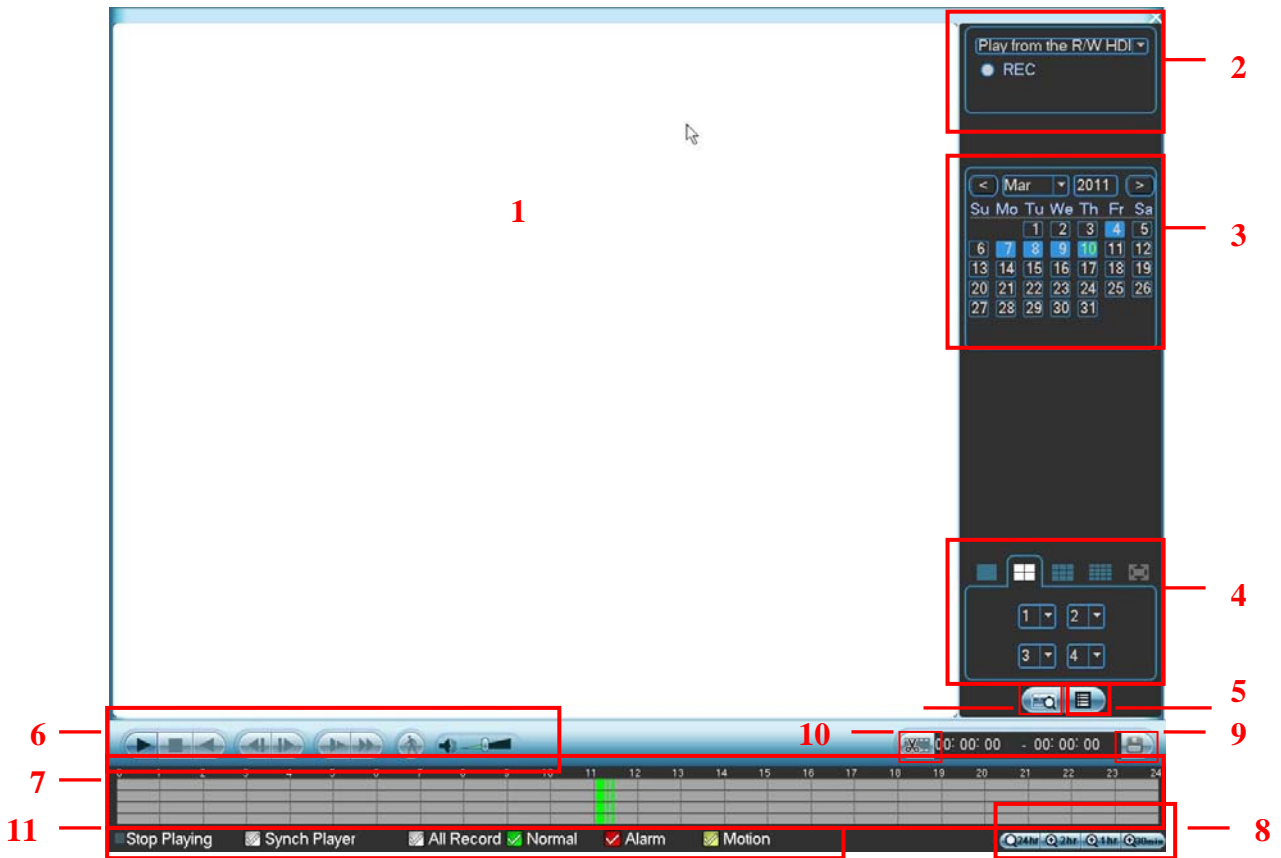
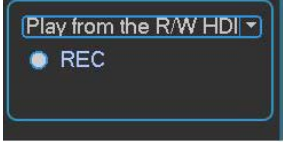



Figure 2-11

Please refer to the following sheet for more information.

SN	Name	Function
1	Display window	<ul style="list-style-type: none"> ●Here is to display the searched file. ●Support 1/4/9/16-window playback.
2	Search type	<ul style="list-style-type: none"> ●Here you can search the recorded file. 
3	Calendar	<ul style="list-style-type: none"> ●The blue highlighted date means there are recorded files. Otherwise, there is no file. ●In any play mode, click the date you want to see, you can see the corresponding record file trace in the time bar.
4	Playback mode and channel selection pane.	<ul style="list-style-type: none"> ●Playback mode: 1/4/9/16. (It may vary due to different series.) ◇ In 1-window playback mode: you can select 1-16 channels. ◇ In 4-window playback mode: you can select 4 channels according to your requirement. ◇ In 9-window playback mode, you can switch between 1-9 and 10-16 channels. ◇ In 16-window playback mode, you can switch between 1-16 and 17-32 channels. ●The time bar will change once you modify the playback mode or the channel option.

5	File list switch button	<ul style="list-style-type: none"> ●Double click it; you can view the recorded file list of current day. ●The file list is to display the first channel of the record file. ●The system can display max 128 files in one time. Use the ▲/▼ or the mouse to view the file. Select one item, and then double click the mouse or click the ENTER button to playback. ●You can input the period in the following interface to begin accurate search. ●File type: R—regular record; A—external alarm record; M—Motion detect record. 																		
6	Playback control pane.	<table border="1"> <tr> <td data-bbox="470 472 555 660"></td> <td data-bbox="555 472 1524 660"> Play/Pause There are three ways for you to begin playback. <ul style="list-style-type: none"> ● The play button ● Double click the valid period of the time bar. ● Double click the item in the file list. In slow play mode, click it to switch between play/pause. </td> </tr> <tr> <td data-bbox="470 660 555 696"></td> <td data-bbox="555 660 1524 696">Stop</td> </tr> <tr> <td data-bbox="470 696 555 824"></td> <td data-bbox="555 696 1524 824"> Backward play In normal play mode, left click the button, the file begins backward play. Click it again to pause current play. In backward play mode, click to restore normal play. </td> </tr> <tr> <td data-bbox="470 824 555 987"></td> <td data-bbox="555 824 1524 987"> In playback mode, click it to play the next or the previous section. You can click continuously when you are watching the files from the same channel. In normal play mode, when you pause current play, you can click and to begin frame by frame playback. In frame by frame playback mode, click to restore normal playback. </td> </tr> <tr> <td data-bbox="470 987 555 1108"></td> <td data-bbox="555 987 1524 1108"> Slow play In playback mode, click it to realize various slow play modes such as slow play 1, slow play 2, and etc. </td> </tr> <tr> <td data-bbox="470 1108 555 1234"></td> <td data-bbox="555 1108 1524 1234"> Fast forward In playback mode, click to realize various fast play modes such as fast play 1, fast play 2 and etc. </td> </tr> <tr> <td colspan="2" data-bbox="470 1234 1524 1279">Note: The actual play speed has relationship with the software version.</td> </tr> <tr> <td data-bbox="470 1279 555 1357"></td> <td data-bbox="555 1279 1524 1357">Smart search Please refer to the SN12 for detailed information.</td> </tr> <tr> <td data-bbox="470 1357 555 1415"></td> <td data-bbox="555 1357 1524 1415">The volume of the playback</td> </tr> </table>		Play/Pause There are three ways for you to begin playback. <ul style="list-style-type: none"> ● The play button ● Double click the valid period of the time bar. ● Double click the item in the file list. In slow play mode, click it to switch between play/pause.		Stop		Backward play In normal play mode, left click the button, the file begins backward play. Click it again to pause current play. In backward play mode, click to restore normal play.		In playback mode, click it to play the next or the previous section. You can click continuously when you are watching the files from the same channel. In normal play mode, when you pause current play, you can click and to begin frame by frame playback. In frame by frame playback mode, click to restore normal playback.		Slow play In playback mode, click it to realize various slow play modes such as slow play 1, slow play 2, and etc.		Fast forward In playback mode, click to realize various fast play modes such as fast play 1, fast play 2 and etc.	Note: The actual play speed has relationship with the software version.			Smart search Please refer to the SN12 for detailed information.		The volume of the playback
	Play/Pause There are three ways for you to begin playback. <ul style="list-style-type: none"> ● The play button ● Double click the valid period of the time bar. ● Double click the item in the file list. In slow play mode, click it to switch between play/pause.																			
	Stop																			
	Backward play In normal play mode, left click the button, the file begins backward play. Click it again to pause current play. In backward play mode, click to restore normal play.																			
	In playback mode, click it to play the next or the previous section. You can click continuously when you are watching the files from the same channel. In normal play mode, when you pause current play, you can click and to begin frame by frame playback. In frame by frame playback mode, click to restore normal playback.																			
	Slow play In playback mode, click it to realize various slow play modes such as slow play 1, slow play 2, and etc.																			
	Fast forward In playback mode, click to realize various fast play modes such as fast play 1, fast play 2 and etc.																			
Note: The actual play speed has relationship with the software version.																				
	Smart search Please refer to the SN12 for detailed information.																			
	The volume of the playback																			
7	Time bar	<ul style="list-style-type: none"> ●It is to display the record type and its period in current search criteria. ●In 4-window playback mode, there are corresponding four time bars. In other playback mode, there is only one time bar. ●Use the mouse to click one point of the color zone in the time bar, system begins playback. ●The time bar is beginning with 0 o'clock when you are setting the configuration. The time bar zooms in the period of the current playback time when you are playing the file. ●The green color stands for the regular record file. The red color stands for the external alarm record file. The yellow stands for the motion detect record file. 																		
8	Time bar unit	<ul style="list-style-type: none"> ●The option includes: 24H, 12H, 1H and 30M. The smaller the unit, the larger the zoom rate. You can accurately set the time in the time bar to playback the record. ●The time bar is beginning with 0 o'clock when you are setting the configuration. The time bar zooms in the period of the current playback time when you are playing the file. 																		
9	Backup	<p>Select the file(s) you want to backup from the file list. System max supports files from four channels. Then click the backup button, now you can see the backup menu. Click the start button to begin the backup operation. Check the file again you can cancel current selection. System max supports to display 32 files from one channel.</p>																		

10	Clip	<ul style="list-style-type: none"> ● It is to edit the file. ● Please play the file you want to edit and then click this button when you want to edit. You can see the corresponding slide bar in the time bar of the corresponding channel. You can adjust the slide bar or input the accurate time to set the file end time. Click this button again and then save current contents in a new file. .
11	Record type	In any play mode, the time bar will change once you modify the search type.
12	Smart search	<ul style="list-style-type: none"> ● When system is playing, you can select a zone in the window to begin motion detect. Click the motion detect button to begin play. ● Current button is null once the motion detect play has begun. ● The system will take the whole play zone as the motion detect region by default. ● The motion detect play stopped once you switch the play file. ● Operations such as set time bar, click the play button, or any file list operation will stop current motion detect play.
Other Functions		
13	Other channel synchronization switch to play when playback	When playing the file, click the number button of the remote control, system can switch to the same period of the corresponding channel to play.
14	Digital zoom	When the system is in full-screen playback mode, left click the mouse in the screen. Drag your mouse in the screen to select a section and then left click mouse to realize digital zoom. You can right click mouse to exit.

Please note the smart search function has relationship with the actual software version. Please contact your local retailer or visit our website to get the latest software version.

2.7 Network Setup

Here is for you to input network information. See Figure 2-12.

- IP address: Here you can input IP address.
- DHCP: It is auto search IP function. When enable DHCP function, you can not modify IP/Subnet mask /Gateway. These values are from DHCP function. If you have not enabled DHCP function, IP/Subnet mask/Gateway display as 0. You need to disable DHCP function to view current IP information. Besides, when PPPoE is operating, you can not modify IP/Subnet mask /Gateway.
- TCP port: Default value is 37777.
- UDP port: Default value is 37778.
- HTTP port: Default value is 80.
- Max connection: system support maximal 10 users. 0 means there is no connection limit.
- Transfer mode: Here you can select the priority between fluency/video qualities.
- Network download: System can process the downloaded data first if you enable this function.
- Advanced setting: Please refer to the *user's manual* included in the resource CD for detailed information.

After completing all the setups please click save button, system goes back to the previous menu.

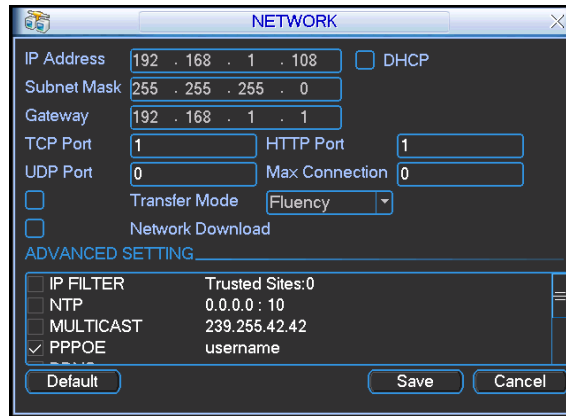


Figure 2-12

2.8 Pan/Tilt/Zoom

Please note:

- Slight difference may be found in the user interface, due to various protocols.
- Please make sure the speed domes A/B cables are properly connected to the A/B ports of combo DVR.
- You have properly set PTZ information.
- Please switch camera monitor channel to current window.

2.8.1 PTZ Setup

The pan/tilt/zoom setup includes the following items. Please select channel first. See Figure 2-13.

- Protocol: Select corresponding PTZ protocol such as PELCOD.
- Address: Input corresponding PTZ address.
- Baud rate: Select baud rate.
- Data bit: Select data bit. Default value is 8.
- Stop bit: Select stop bit. Default value is 1.
- Parity: There are three choices: none/odd/even. Default value is none.



Figure 2-13

After completing all the setups please click save button, system goes back to the previous menu.

2.8.2 PTZ Operation

In one window display mode, right click mouse (click “Fn” Button in the front panel or click “Fn” key in the remote control). The interface is shown as in Figure 2-14.

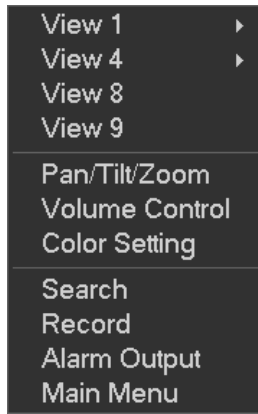


Figure 2-14

Click Pan/Tilt/Zoom, the interface is shown as below. See Figure 2-15.

Here you can set the following items:

- Step: value ranges from 1 to 8.
- Zoom
- Focus
- Iris



Click icon  and  to adjust zoom, focus and iris.



Figure 2-15

In Figure 2-15, please click direction arrows (See Figure 2-16) to adjust PTZ position. There are total 8 direction arrows. Please note if you use remote control, you can use just four directions (Up/down/left/right).

The speed value ranges from 1 to 8.



Figure 2-16







2.8.3 3D Intelligent Positioning Key

In the middle of the eight direction arrows, there is a 3D intelligent positioning key. See Figure 2-17. Please note, this function needs protocol supported and can only be operated by mouse. Click this key, system goes back to the single screen mode. Drag the mouse in the screen to adjust section size. It can realize PTZ automatically.



Figure 2-17

Here is a sheet for you reference.

Name	Function key	function	Shortcut key	Function key	function	Shortcut Key
Zoom		Near	▶		Far	▶▶
Focus		Near	◀		Far	▶
Iris		close	◀		Open	▶

You can click set button in Figure 2-15 (or click REC button in the front panel) to set preset, tour, and pattern.

You can click page switch button in Figure 2-15 (or click Fn button in the front panel) to call main function.

3 Web Operation

Slightly difference may be found in the interface due to different series.

The following operation is based on the 8-channel series product.

3.1 Network Connection

Before web client operation, please check the following items:

- Network connection is right
- Combo DVR and PC network setup is right. Please refer to network setup(main menu->setting->network)
- Use order ping *****.***.***.*****(* combo DVR IP address) to check connection is OK or not. Usually the return TTL value should be less than 255.
- System can automatically download latest web control and the new version can overwrite the previous one.
- If you want to un-install the web controls, please run *uninstall webrec2.0.bat* to auto delete the control or you can go to C:\Program Files\webrec to delete Single folder.

3.2 Login

Open IE and input combo DVR address in the address column. For example, if your combo DVR IP is 10.10.3.16, then please input **http:// 10.10.3.16** in IE address column.

System pops up warning information to ask you whether install webrec.cab control or not. Please click yes button.

If you can't download the ActiveX file, please modify your IE security setup.

After installation, the interface is shown as below. See Figure 3-1.

Please input your user name and password.

Default factory name is admin and password is admin.

Note: For security reasons, please modify your password after you first login.

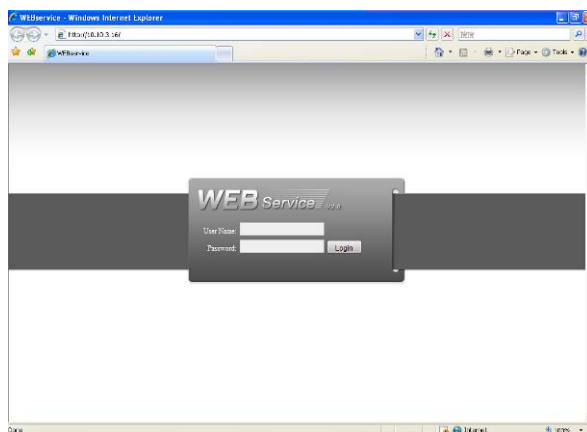


Figure 3-1

3.3 Main Window

After you logged in, you can see the main window. See Figure 3-2.

Click the channel name on the left side; you can view the real-time video.

For detailed operation information, please refer to the *User's Manual* included in the resources CD.

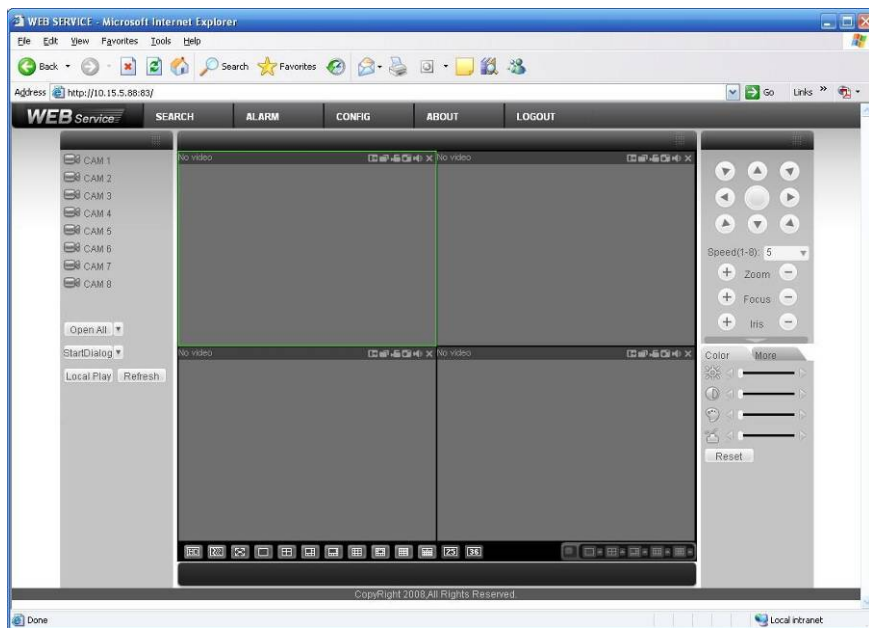


Figure 3-2

4 Appendix Toxic or Hazardous Materials or Elements

Component Name	Toxic or Hazardous Materials or Elements					
	Pb	Hg	Cd	Cr VI	PBB	PBDE
Sheet Metal(Case)	○	○	○	○	○	○
Plastic Parts (Panel)	○	○	○	○	○	○
Wire and Cable	○	○	○	○	○	○
Fastener	○	○	○	○	○	○
Cardboard (Packing Material)	○	○	○	○	○	○
Accessories	○	○	○	○	○	○

Note

O: Indicates that the concentration of the hazardous substance in all homogeneous materials in the parts is below the relevant threshold of the SJ/T11363-2006 standard.

X: Indicates that the concentration of the hazardous substance of at least one of all homogeneous materials in the parts is above the relevant threshold of the SJ/T11363-2006 standard.

Note

- For detailed operation introduction, please refer to our resource CD included in your package for electronic version of the *User's Manual*.
- Slight difference may be found in user interface.
- All the designs and software here are subject to change without prior written notice.
- If there is any uncertainty or controversy, please refer to the final explanation of us.
- Please visit our website for more information.