

Forensic Series Standalone DVR Quick Start Guide

Table of Contents

1	Hardware Installation and Connections.....	6
1.1	Check Unpacked DVR.....	6
1.2	HDD Installation.....	6
1.2.1	Choose HDDs.....	6
1.2.2	Calculate HDD Size.....	6
1.2.3	HDD Installation.....	6
1.3	Front Panel.....	7
1.4	Rear Panel.....	7
1.5	Alarm Input and Relay Output.....	8
1.5.1	Relay Output Description.....	10
2	Overview of Navigation and Controls.....	11
2.1	Login, Logout & Main Menu.....	11
2.1.1	Login.....	11
2.1.2	Main Menu.....	11
2.1.3	Logout.....	12
2.1.4	Auto Resume after Power Failure.....	12
2.1.5	Replace Button Battery.....	12
2.2	Recording Operation.....	12
2.2.1	Live Viewing.....	12
2.3	Record Setup (Schedule).....	13
2.3.1	Schedule Menu.....	13
2.3.1	Manual record.....	14
2.3.2	Encode.....	14
2.3.3	Search and Playback.....	16
2.3.4	Backup.....	19
2.4	CD-ROM Playback.....	22
2.5	Network Setup.....	23
2.6	Pan/Tilt/Zoom.....	24
2.6.1	PTZ setup.....	24
2.6.2	PTZ operation.....	25
2.6.3	3D Intelligent Positioning Key.....	26

3	Web Client Operation	27
3.1	Network Connection	27
3.2	Login	27
3.3	Main Window	29
3.4	Burning	30

Thank you for purchasing our DVR!

This quick start guide will help you become familiar with our DVR in a very short time.

Here you can find hardware installation, cable connection information and general operations such as system setup, record, search, backup, alarm setup, PTZ operation, also here you can find web operation instruction.

Before installation and operation please read the following safeguards and warnings carefully!

Important Safeguards and Warnings

1 . Electrical safety

All installation and operation here should conform to local electrical safety codes. We assume no liability or responsibility for all the fires or electrical shock caused by improper handling or installation.

2 . Transportation security

Heavy stress, violent vibration or water splash are not allowed during transportation, storage and installation.

3 . Installation

Keep upwards. Handle with care.

Do not apply power to the DVR before completing installation.

Do not place objects on the DVR

4 . Qualified engineers needed

All the examination and repair work should be done by the qualified service engineers.

We are not liable for any problems caused by unauthorized modifications or attempted repair.

5 . Environment

The DVR should be installed in a cool, dry place away from direct sunlight, inflammable, explosive substances and etc.

6. Accessories

Be sure to use all the accessories recommended by manufacturer.

Before installation, please open the package and check all the components listed below are included:

- One power cable
- One Ethernet cable
- Four HDD cables
- Alarm & relay terminal blocks
- Extensional cable(for audio, loop & matrix)
- One remote control(including the battery)
- One USB mouse
- One CD(including DVR manual, client & small tools)
- Warranty card
- A package of installation fittings

Contact your local retailer ASAP if something is missing in your package.

1 Hardware Installation and Connections

Note: All the installation and operations here should conform to your local electric safety rules.

1.1 Check Unpacked DVR

When you receive the DVR from the shipping agency, please check whether there is any visible damage to the DVR appearance. The protective materials used for the package of the DVR can protect most accidental clashes during transportation. Then you can open the box to check the accessories.

Please check the items in accordance with the list on the warranty card. Finally you can remove the protective film of the DVR.

1.2 HDD Installation

1.2.1 Choose HDDs

We recommend Seagate HDD of 7200rpm or higher.

1.2.2 Calculate HDD Size

This series have no limit to HDD capacity. You can use 120G-750G HDD to guarantee higher stability.

The formula of total HDD size is:

Total Capacity (MB) = Camera Amount * Recording Hours * HDD Usage Per Hour (M/h)

H.264 compression is ideal for standalone DVRs. It can save more than 30% HDD capacity than MPEG4. When you calculate the total HD capacity, you should estimate the average HDD capacity per hour for each channel.

For example, for a 4-ch DVR, the average capacity of HDD usage per hour per channel is 200M/h. Now if you hope the DVR can record the video 12 hours each day for 30 days, the total capacity of HDDs needed is: 4 channels * 30 days * 12 hours * 200 M/h = 288G. So you need to install one 300G HDD or two 160G HDDs.

1.2.3 HDD Installation

Data ribbons, fastening screws and smart HDD shelf design are already provided in the accessories bag.

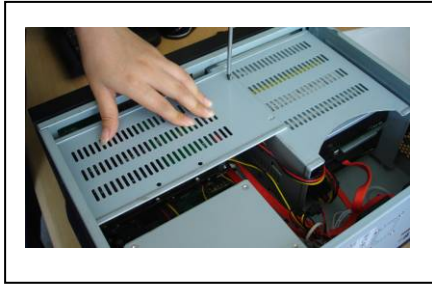
Please follow the instructions below to install hard disk.



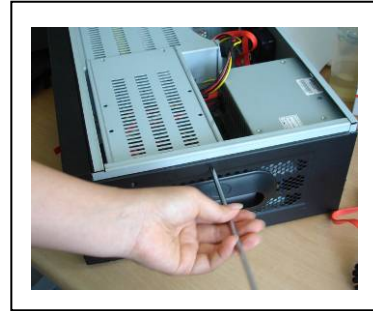
1. Fix the HDD on the bracket.



2. Connect power and data cable.



3. Fix the HDD bracket on the top.



4. Fix the bracket on the side.

After completed HDD installation, please check data ribbon and power cord connection.

1.3 Front Panel

Front panel is shown as in Figure 1-1.

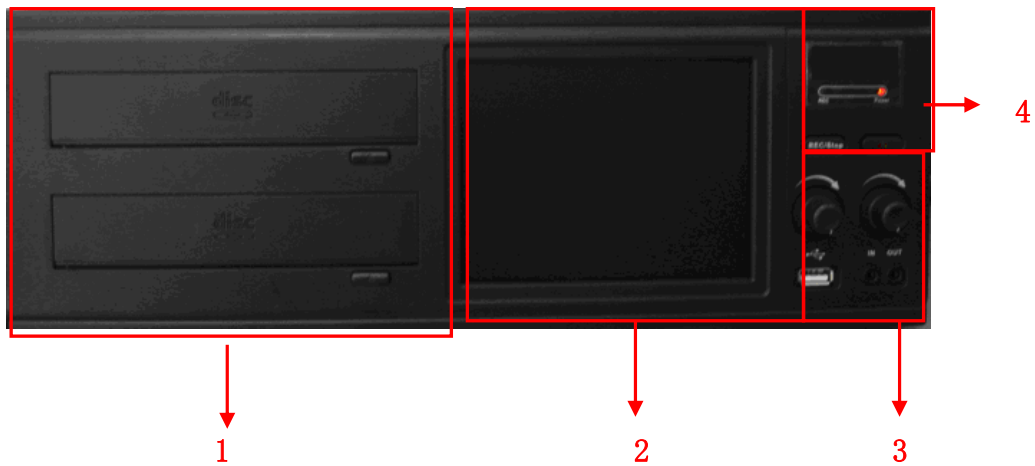


Figure 1-1

1	Burner
2	LCD
3	input/output volume USB port IN : audio talk input OUT : earphone output
4	Burning indication light Power indication light Burner/stop button LCD Power button.

1.4 Rear Panel

This series DVR rear panel is shown as in Figure 1-2.

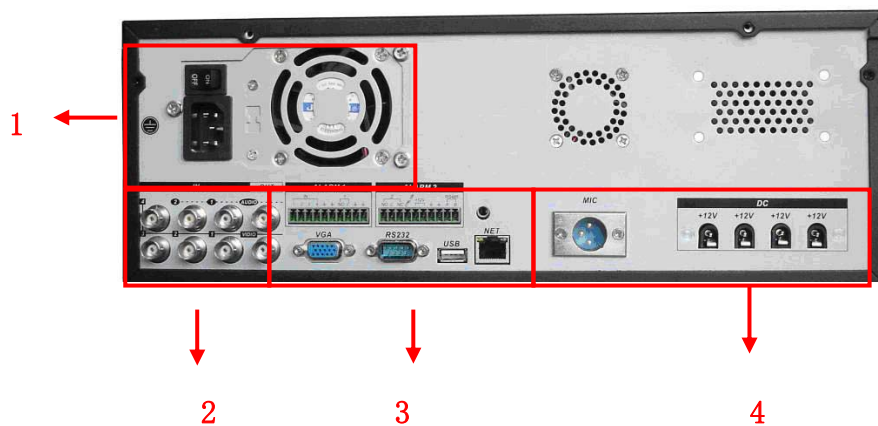


Figure 1-2

1	Power button Power socket Fan
2	AUDIO OUT AUDIO IN VEDIO OUT VEDIO IN
3	Alarm-RS485 port RS232 port VGA port USB port NET port (RJ45)
4	Pickup port Four 12V power sockets

1.5 Alarm Input and Relay Output


The DVR offers 4 alarm inputs for external signaling devices, such as door contacts or motion detectors. Each alarm input can be either normally open or normally closed. Once configured, an alarm input can invoke many different activities, including triggering a relay device, sending an alert to a security office or storing pre-alarm video to the DVR.

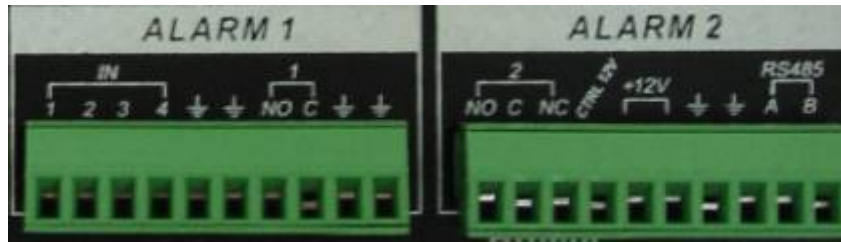
Please note this series product adopts ground alarm: When alarm circuit connects to ground you can activate an alarm.

Alarm input and alarm output description :

- a) In alarm 1, from the left to the right are alarm1 to alarm 4 respectively. The alarm becomes activated in low voltage.
- b) In alarm1, 1-No c is normal open activation output. In alarm 2, 2-NO C NC is

a group of normal close activation output.

- c) +12V is external alarm input. Here needs an external device to provide +12V power. The alarm device power shall be less than 1A,
- d) A.B is A/B cable to control 485 device. You can connect to control decoder and etc. You need to use a 120Ohm resistance between A/B cable if there are too many PTZ decoder.
- e) “”: ground cable;



You can refer to the following sheet and Figure 1-3 for alarm input and output information.

Parameter	Grounding Alarm
Ground	Ground line
Alarm Input	1, 2, ...,4
Relay Output	1,2,3,4: NO and C(Normally Open and Com) 5: NO,C and NC(Normally Open, Com, Normally Closed) 6: Ctrl 12V(This is used for reset the sensor)
485 A、 B	485 communication port. They are used to control devices such as PTZ.
+12 (C)	This should input an external power input.

- 4-ch grounding alarm inputs. (Normal open or Normal close type)
- Please parallel connect COM end and GND end of the alarm detector (Provide external power to the alarm detector).
- Please parallel connect the Ground of the DVR and the ground of the alarm detector.
- Please connect the NC port of the alarm sensor to the DVR alarm input(ALARM)
- If you need to reset the touched-off alarm remotely, you can use DVR to supply controllable 12 V power to the alarm detector such as the smoke detector.

- Use the same ground with that of DVR if you use external power to the alarm device.

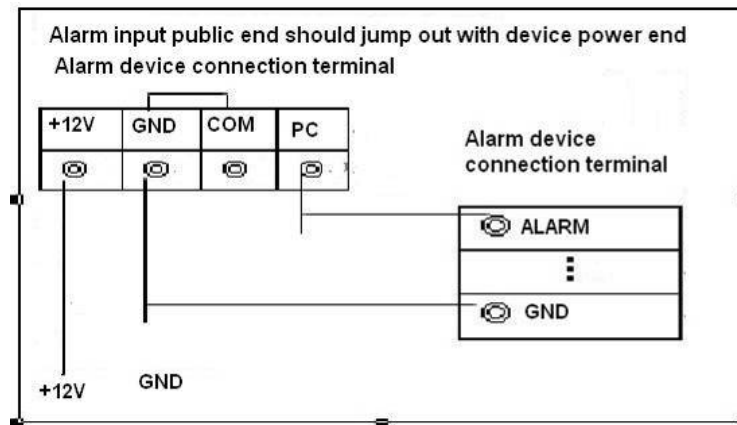


Figure 1-3

1.5.1 Relay Output Description

- 3 ways relay alarm output. Provide external power to external alarm device.
- To avoid over loading, please read the corresponding relay parameters sheet carefully.
- The controllable +12v can be used to restore the smoke detector.

2 Overview of Navigation and Controls

Before operation, please make sure you have properly installed HDDs and all the cable connections.

2.1 Login, Logout & Main Menu

2.1.1 Login

When the system boots up, default video display is in multiple-window mode. Click Enter or left click mouse, you can see the login interface. See Figure 2-1. System consists of four accounts:

- **Username:** admin. **Password:** admin. (administrator, local and network)
- **Username:** 888888. **Password:** 888888. (administrator, local only)
- **Username:** 666666. **Password:** 666666 (Lower authority user who can only monitor, playback, backup and etc.)
- **Username:** default. **Password:** default(hidden user)

For your system security, please modify you password after first login.

You can use USB mouse, front panel, remote controller or keyboard to input.

About input method: Click **123** to switch between numeral, English character (small/capitalized) and denotation.

Note: Three times login failure in 30 minutes will result in system alarm and five times login failure will result in account lock!



Figure 2-1

2.1.2 Main Menu

After you logged in, the system main menu is shown as below. See Figure 2-2. There are total six icons: search, information, setting, backup, advanced and shutdown.

You can move the cursor to highlight the icon, and then double click mouse to enter the sub-menu.

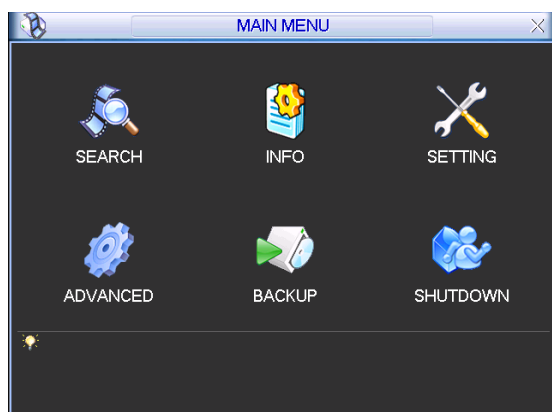


Figure 2-2

2.1.3 Logout

There are two ways for you to log out.

One is from menu option:

In the main menu, click shutdown button, you can see an interface is shown as below. See Figure 2-3.

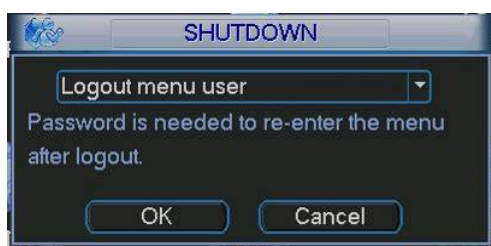


Figure 2-3

There are several options for you. See Figure 2-4.

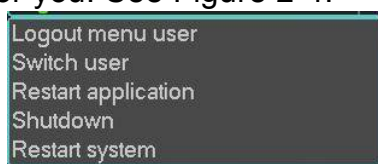


Figure 2-4

The other ways is to press power button on the front panel for at least 3 seconds, system will stop all operations. Then you can click the power button in the rear panel to turn off the DVR.

2.1.4 Auto Resume after Power Failure

The system can automatically backup video and resume previous working status after power failure.

2.1.5 Replace Button Battery





Please make sure to use the same battery model if possible.



We recommend replace battery regularly (such as one-year) to guarantee system time accuracy.

2.2 Recording Operation

2.2.1 Live Viewing

When you login, the system is in live viewing mode. You can see system date, time and channel name. If you want to change system date and time, you can refer to general settings (Main Menu->Setting->General). If you want to modify the channel name, please refer to the display settings (Main Menu->Setting->Display)

1		Recording status	3		Video loss
2		Motion detection	4		Camera lock

Note: Please refer to the following sheet for channel status.  stands for opening switch function,  stands for closing switch function.

2.3 Record Setup (Schedule)

When the system boots up, it is in default 24-hour regular mode. You can set record type and time in schedule interface.


4.4.1 Schedule Menu

In the main menu, from setting to schedule, you can go to schedule menu. See Figure 2-5.

There are three record types: R-Regular, MD-Motion detection, A- Alarm.

There are total six periods.

- Channel: Please select the channel number first. You can select “all” if you want to set for the whole channels.
- Week day: There are eight options: ranges from Saturday to Sunday and all.
- Redundancy: System supports redundancy backup function. You can highlight Redundancy button to activate this function. Please note, before enable this function, please set at least one HDD as redundant.(Main menu->Advanced->HDD Management)
- Record types: There are three types: regular, motion detection (MD) and Alarm.

Please highlight icon  to select the corresponding function. After all the setups please click save button, system goes back to the previous menu.

At the bottom of the menu, there are color bars for your reference. Green stands for regular recording, yellow stands for motion detection and red stands for alarm recording.



Figure 2-5

2.3.1 Manual record

Note:

You need to have proper rights to implement the following operations. Please make sure the HDDs have been properly installed.

2.3.1.1 Manual record menu

There are two ways for you to go to manual record menu.

- Right click mouse or in the main menu, Advanced->Manual Record.
- In live viewing mode, click record button in the front panel or record button in the remote control.

There are three statuses: schedule/manual/stop. Highlight icon “○” to select corresponding channel. See Figure 2-6.

- Manual: the highest priority. After manual setup, all selected channels will begin ordinary recording.
- Schedule: channel records as you have set in recording setup (Main Menu->Setting->Schedule)
- Stop: all channels stop recording.



Figure 2-6

2.3.2 Encode

Encode setting includes the following items. See Figure 2-7. Please note some series do not support extra stream.

- Channel: Select the channel you want.
- Compression: system supports H.264. Or you can select from the dropdown list.
- Resolution: System supports various resolutions, you can select from the dropdown list. For this model, we can support D1/CIF.
- Bit rate: system supports two types: CBR and VBR. In VBR mode, you can set video quality.
- Quality: There are six levels ranging from 1 to 6. The sixth level has the highest image quality.
- Frame rate: there are six levels: 1 f/s,2f/s,3f/s, 6f/s,12f/s,25f/s. (Some series DVRs only support PAL 25f/s)
- Video/audio: you can enable or disable the video/audio.
- Overlay: click overlay button, you can see an interface is shown in Figure 2-8.
- ✧ Cover area (Privacy mask): Here is for you to set window blanking section. You can drag you mouse to set proper section size.
- ✧ Preview/monitor: privacy mask has two types. Preview means the privacy mask zone can not be viewed by user when system is in preview status. Monitor means the privacy mask zone can not be view by the user when system is in monitor status.
- ✧ Time display: You can select system displays time or not when you playback.
- ✧ Channel display: You can select system displays channel number or not when you playback.

System default setup is:

- Channel:1
- Compression:H.264
- Resolution: CIF/D1
- Bit rate: CBR
- Quality: 4
- Frame rate: 25f/s

Please highlight icon  to select the corresponding function.

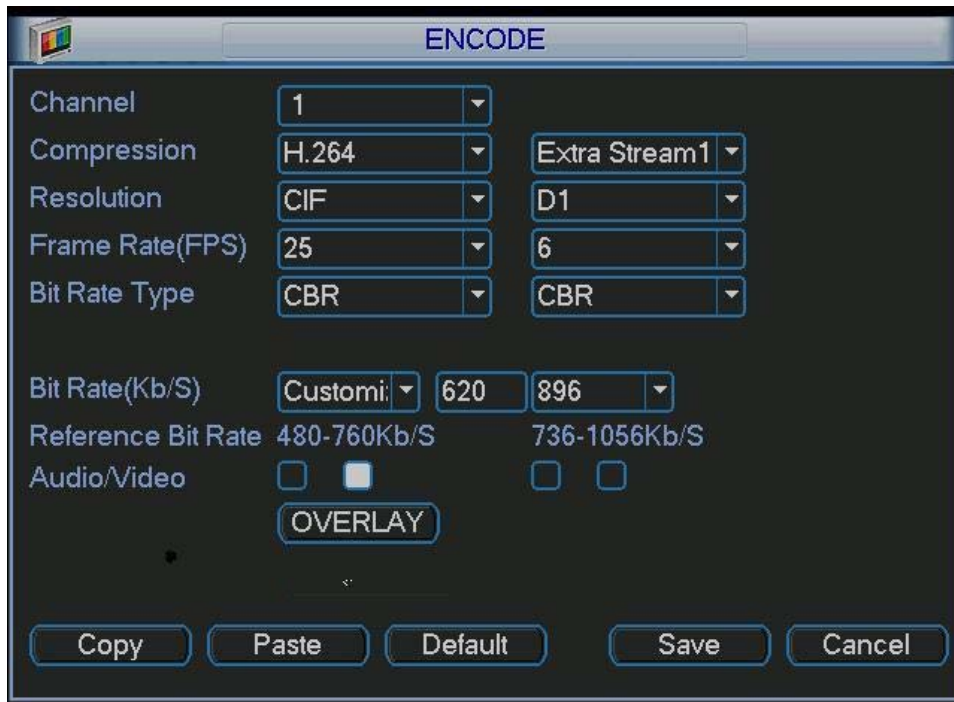


Figure 2-7

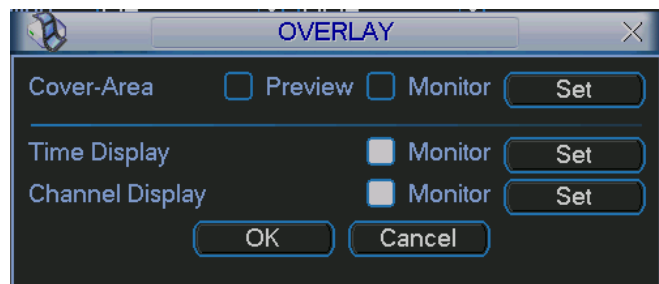


Figure 2-8

2.3.3 Search and Playback

Right click mouse, system pops up the following shortcut menu. See Figure 2-9.

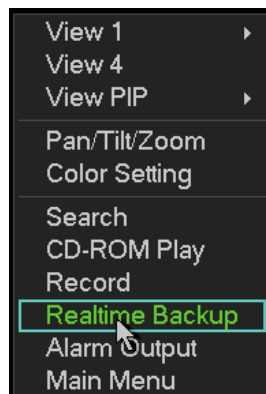


Figure 2-9

Click real-time backup, you can see an interface is shown as in Figure 2-10.

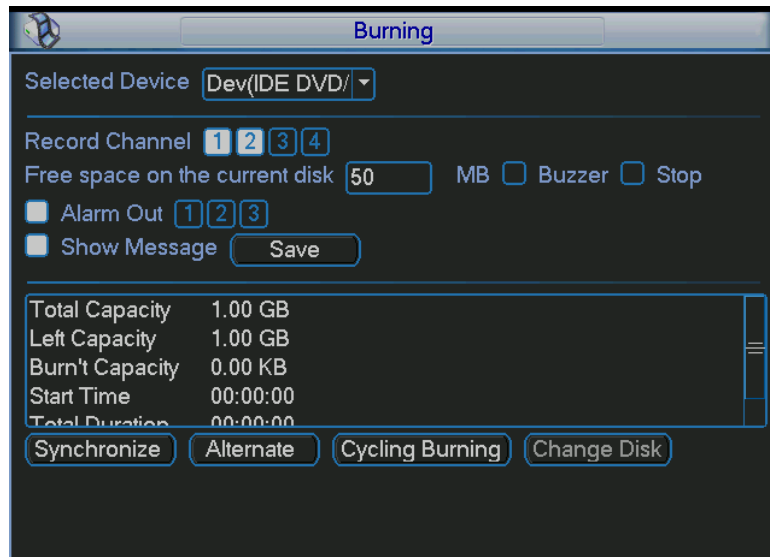


Figure 2-10

You can select device from the dropdown list. System supports CD backup and DVR backup. Usually do not burn in these two types at the same time.

- Record channel: now system max support backup 2 channels at the same time.
- Alarm out: System supports 3 channels.
- Show message: system pops up message in the screen to alert you.
- Synchronize: the selected device burns the same data. Once completes, system auto stop burning. Or you can terminate manually during the burning process.
- Alternative: system begins burning from the first device, then the second device. System repeats the previous process until completing the whole burning process.
- Cycling burning: If you have chose several devices, you can use this function to burn among these devices.
- Change disk: This function allows you to manually change disk. System will burn the last five minutes video of the previous disk into the new disk. Click change disk button, system goes back to device interface. (System auto cancel change disk function if you do not select device to backup after 15 minutes). Click synchronism button to continue burning. During the whole process please make sure record function is proper (Main Menu->Advanced->Manual Record). **Do not** select stop for current backup channel! See Figure 2-11.



Figure 2-11

When you select synchronize burning or alternative burning function, you can view current backup status, at the same time, synchronize (or alternative) button becomes stop button. See Figure 2-12.

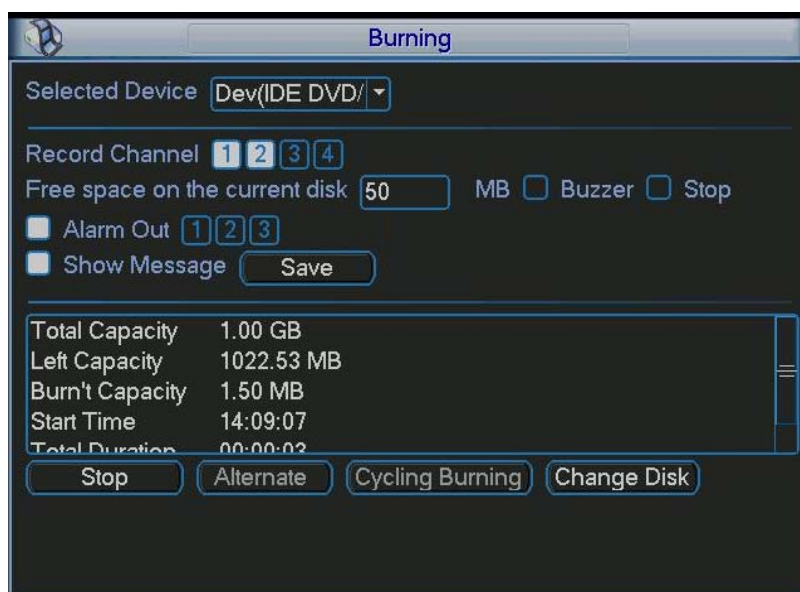


Figure 2-12

During the backup process, you can click stop button to terminate current burning. System pops up warning dialogue box asking you to confirm. See Figure 2-13.

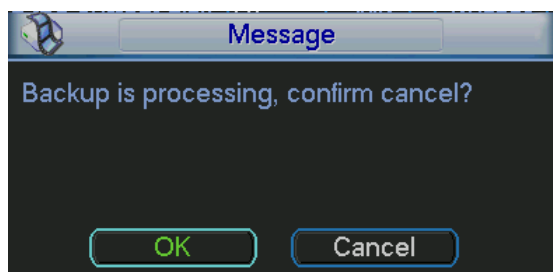


Figure 2-13

You can see the following dialogue box when backup completed. See Figure 2-14.

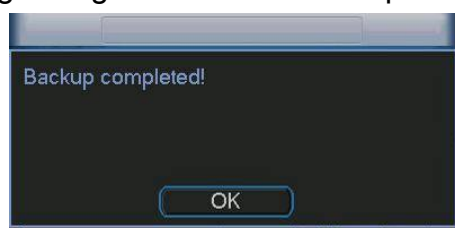


Figure 2-14

Since DVR file is huge, system can divide it into several files and each file size is 600M (usually the last file is smaller than 600M). System will adjust in accordance with you backup size to facilitate data backup.

Tips:

During the backup process, you can overlay special time title so that you can search easily in the future.

You can also connect DVR alarm in 1 with peripheral device, system will auto overlay time information in corresponding video when alarm occurred.

2.3.4 Backup

You can go to backup interface from the main menu. See Figure 2-15.



Figure 2-15

Click backup button, the interface is shown as in Figure 2-16. Please note current burning is the same as real-time burning. .

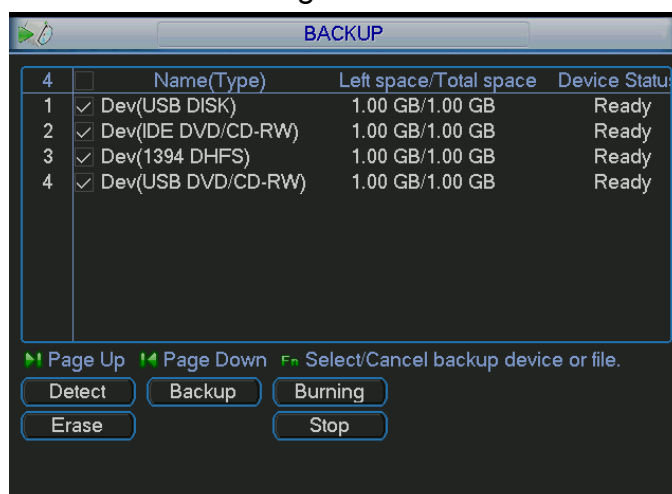


Figure 2-16

In Figure 2-16, click backup button, the interface is shown as in Figure 2-17.

System supports ordinary backup and PIP (Picture in picture).

If you want to enable PIP function, you need to note:

- ✧ Select two different channels
- ✧ These two recorded files start time and end time shall be less than 2 seconds.

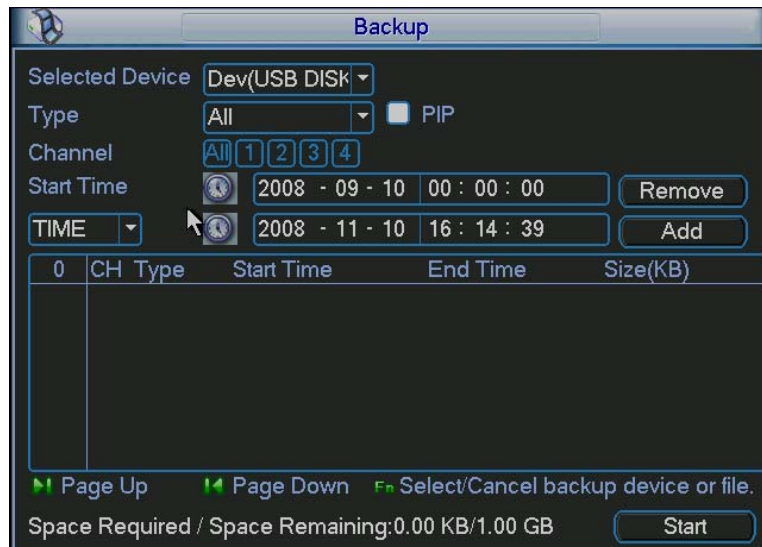


Figure 2-17

Select the device, type, channel number and then input start time and end time in Figure 2-17. Click add button, system auto begins searching files. There is a ✓ before all matched file names. See Figure 2-18.

You can continue setting time period and click add button to search. All matched files are listed below, you can use page up/down to view.

You can view backup information at the bottom of the interface. Please note system only backup those files that there is a ✓ before file name.

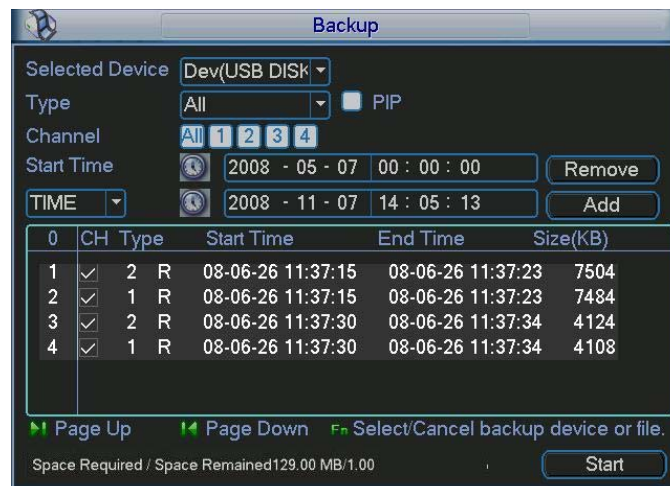


Figure 2-18

Click backup button, system begins burning. At the same time, the backup button becomes stop button. You can view the remaining time and process bar at the left bottom. See Figure 2-19.

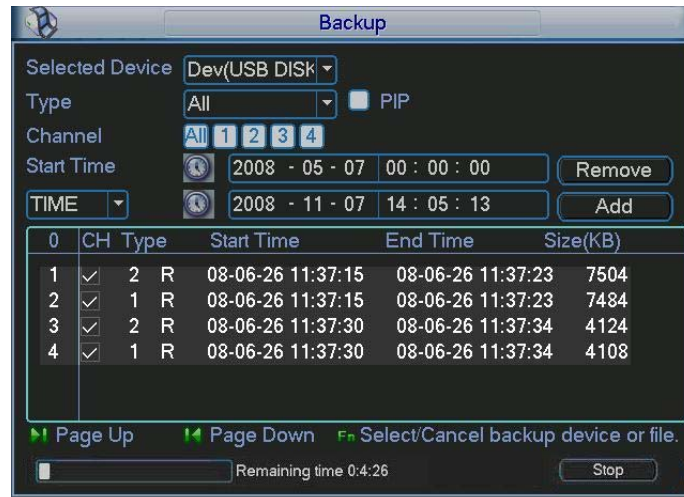


Figure 2-19

When backup completed, you can see the following interface. See Figure 2-20.



Figure 2-20

Tips:

During backup process, you can click ESC to exit current interface; but system will not terminate backup process.

Note:

When you click stop button during the burning process, there are two conditions for different devices:

- For CD-ROM device, the stop function becomes activated immediately and there is no data in the CD.
- For USB device, system can backup the data before you click stop button. For example, if there is a file of 10 minutes, when you click stop after five minutes backup, system only save the previous 5-minute data in the device.

You can use Fn or cancel button to delete ✓ after file serial number. The file name format usually is: SN_CH+channel number+time Y+M+D+M+S, among which the YDM format is the same as you set in general interface. (Main Menu ->Setting ->General).

You can visit our website to view listed CD-ROM type.

2.4 CD-ROM Playback

To verify real-time backup data, this series DVR supports CD playback.

In Figure 2-9, click CD-ROM play button, you can see an interface is shown as below. See Figure 2-21.

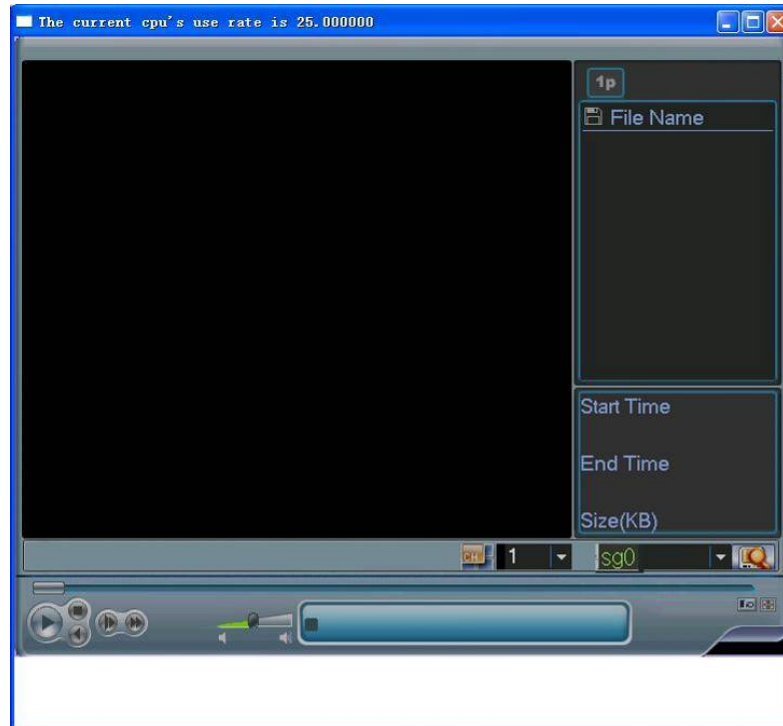


Figure 2-21

Sg0 means it is a CD device. Click search button, you can view file list in current CD. See Figure 2-22.

Double click file name, you can playback current file.

If you select channel 2, system auto playback files in channel 2.

Please note: real-time backup and CD playback are both operations for CD. You can not operate these two functions at the same time.

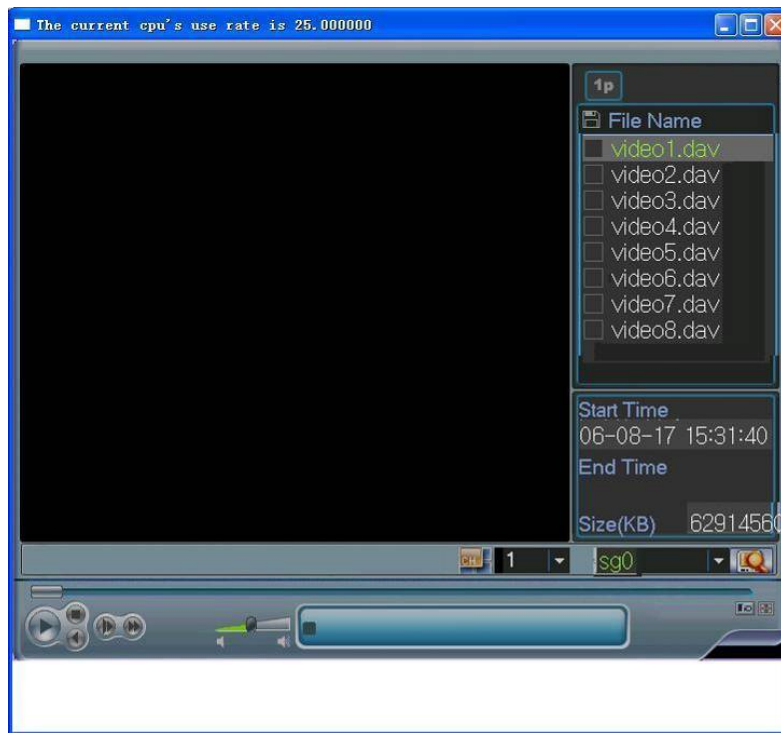


Figure 2-22

2.5 Network Setup

Here is for you to input network information. See Figure 2-23.

- IP address: Here you can input IP address.
- DHCP: It is auto search IP function. When enable DHCP function, you can not modify IP/Subnet mask /Gateway. These values are from DHCP function. If you have not enabled DHCP function, IP/Subnet mask/Gateway display as 0. You need to disable DHCP function to view current IP information. Besides, when PPPoE is operating, you can not modify IP/Subnet mask /Gateway.
- TCP port: Default value is 37777. (System server port 37778 is reserved for network UDP use.)
- UDP port: Default value is 37778.
- HTTP port: Default value is 80.
- Max connection: system support maximal 10 users. 0 means there is no connection limit.
- Transfer mode: Here you can select the priority between fluency/video qualities.
- Network download: System can process the downloaded data first if you enable this function.

After completing all the setups please click save button, system goes back to the previous menu.

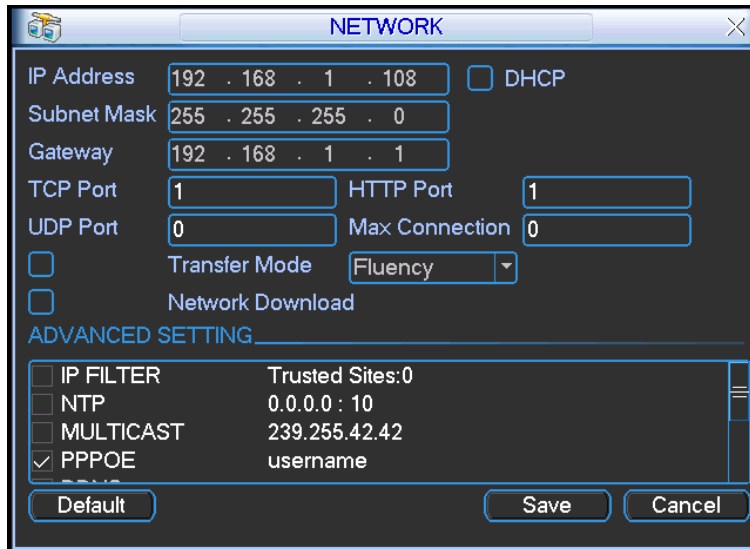


Figure 2-23

2.5.1.1 Advanced Setup

Advanced setup interface is shown as in Figure 2-24. Please draw a circle to enable corresponding function and then double click current item to go to setup interface.

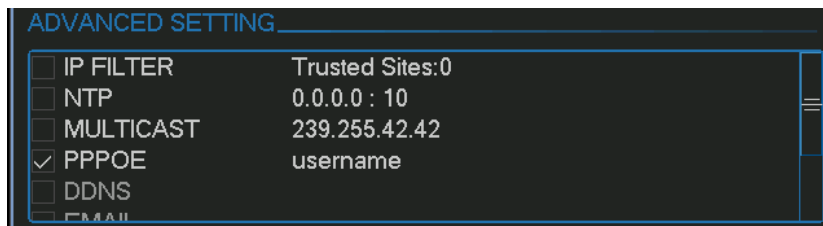


Figure 2-24

2.6 Pan/Tilt/Zoom

2.6.1 PTZ setup

The pan/tilt/zoom setup includes the following items. Please select channel first. See Figure 2-25.

- Protocol: select corresponding PTZ protocol such as PELCOD.
- Address: input corresponding PTZ address.
- Baud rate: select baud rate.
- Data bit: select data bit.
- Stop bit: select stop bit.
- Parity: there are three choices: none/odd/even.

After completing all the setups please click save button, system goes back to the previous menu.

For detailed setup, please refer to *Forensic DVR Standalone user's manual* included in our resource CD.

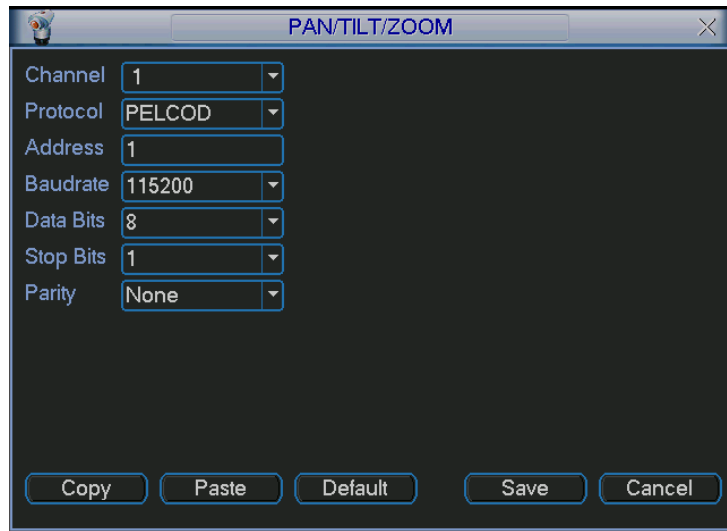


Figure 2-25

After completing all the setups please click save button.

2.6.2 PTZ operation

In one window display mode, right click mouse (click “Fn” Button in the front panel or click “Fn” key in the remote control). The interface is shown as in Figure 2-26.

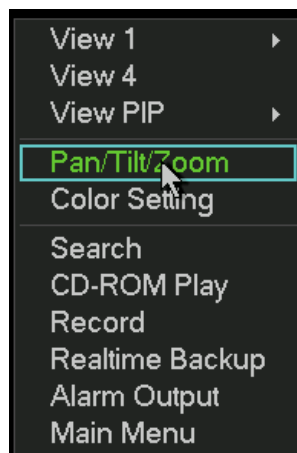


Figure 2-26

Click Pan/Tilt/Zoom, the interface is shown as below. See Figure 2-27.

Here you can set the following items:

- Step: value ranges fro 1 to 8.
- Zoom
- Focus
- Iris

Click icon  and  to adjust zoom, focus and iris.



Figure 2-27

In Figure 2-27, please click direction arrows (See Figure 2-28) to adjust PTZ position. There are total 8 direction arrows.



Figure 2-28

2.6.3 3D Intelligent Positioning Key

In the middle of the eight direction arrows, there is a 3D intelligent positioning key. See Figure 2-29.

Click this key, system goes back to the single screen mode. Drag the mouse in the screen to adjust section size. It can realize PTZ automatically.



Figure 2-29

Here is a sheet for you reference.

Name	Function key	function	Shortcut key	Function key	function	Shortcut Key
Zoom		Near			Far	
Focus		Near			Far	
Iris		close			Open	

You can click set button in Figure 2-27 to set preset, tour, and pattern.

3 Web Client Operation

There might be slightly difference in the interface due to different series.

3.1 Network Connection

Before web client operation, please check the following items:

- Network connection is right
- DVR and PC network setup is right. Please refer to network setup(main menu->setting->network)
- Use order ping `***.***.***.***`(* DVR IP address) to check connection is OK or not. Usually the return TTL value should be less than 255.
- System is compatible with WIN VISTA web control right now. But you need to disable user account control function. Double click user account and then disable user account control. After completing setup, please reboot the PC.
- System can automatically download latest web control and the new version can overwrite the previous one.
- If you want to un-install the web control, please go to start and then click run button, input `regsvr32 -u WebRec.ocx` in the pop up dialogue box or run `uninstall web.bat` to un-install. Please note, before you un-install, please close all web page, otherwise the un-installation might result in error.

3.2 Login

Open IE and input DVR address in the address column. For example, if your DVR IP is 10.10.3.16, then please input `http:// 10.10.3.16` in IE address column. See Figure 3-1

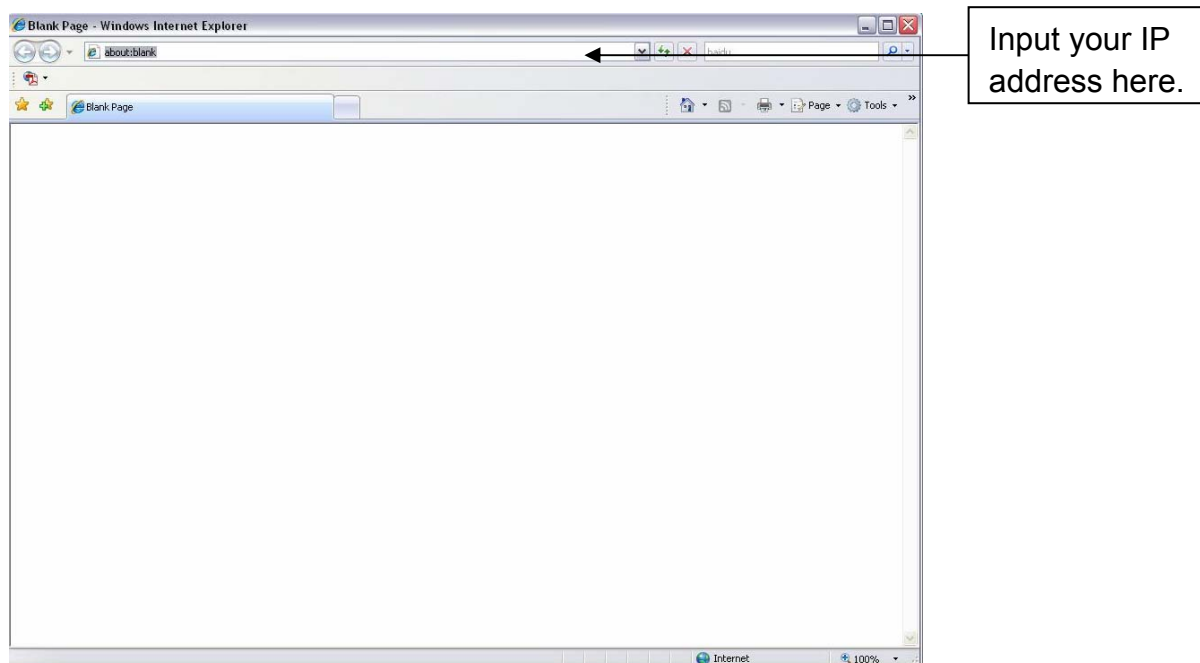


Figure 3-1

System pops up warning information to ask you whether install webrec.cab control or not. Please click yes button.

If you can't download the ActiveX file, please modify your settings as follows. See Figure 3-2.

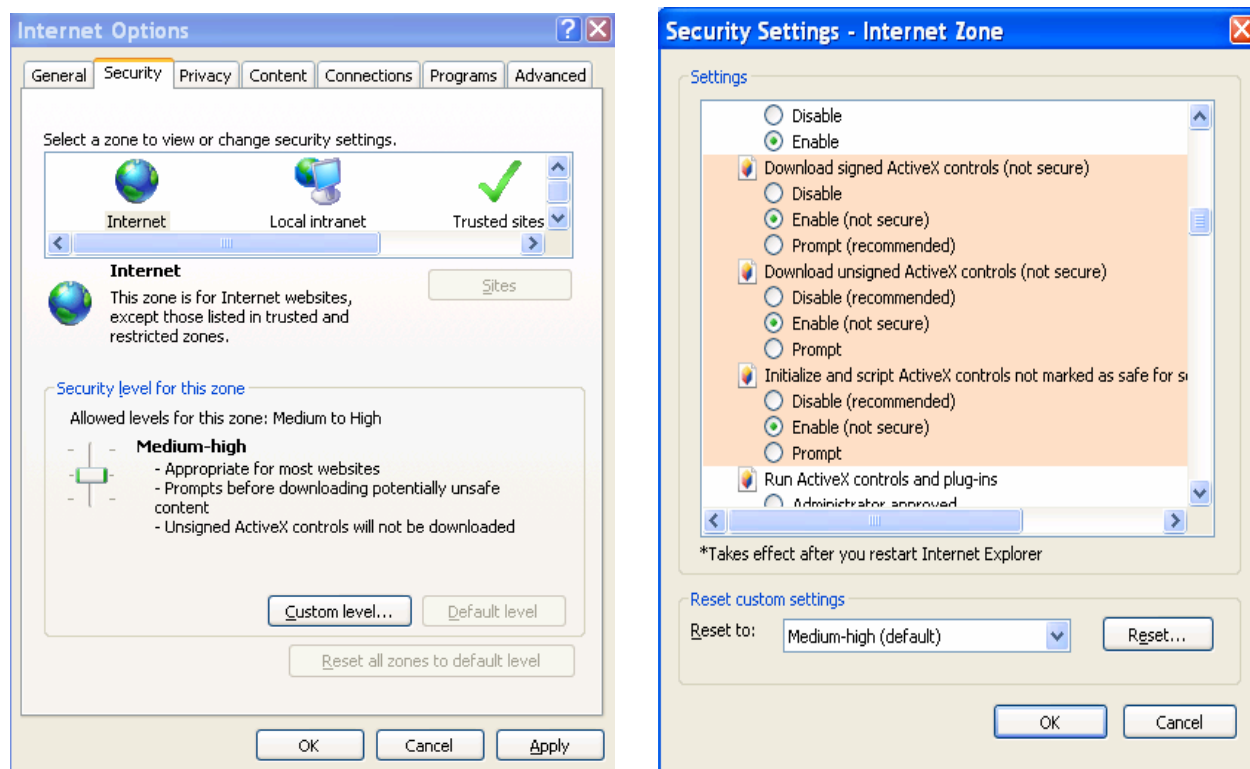


Figure 3-2

After installation, the interface is shown as below. See Figure 3-3.

Please input your user name and password.

Default factory name is admin and password is admin.

Note: For security reasons, please modify your password after you first login.

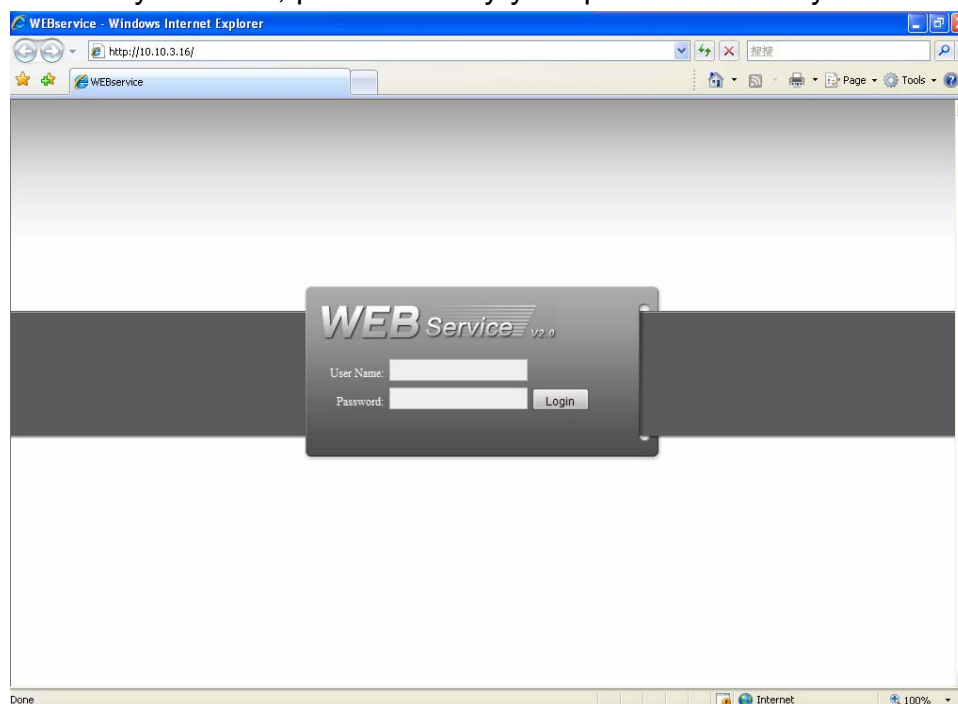


Figure 3-3

3.3 Main Window

After you logged in, you can see the main window. See Figure 3-6.

This main window can be divided into the following sections.

- Section 1: there are five function buttons: configuration, search, alarm, about, log out.
- Section 2: there are channel number and five function buttons: open all/start dialog/refresh/ local play/burning.
- Section3: there are PTZ, color button and you can also select picture path and record path.
- Section 4:real-time monitor window. Please note current preview window is circled by a green rectangle zone.
- Section 5: Here you can view window switch button. You can also select video priority between fluency or real-time.
 - ✧ System monitor window switch supports full screen/1-window/4-window/6-window/8-window/9-window/13-window/16-window/20-window/25-window/36-window. See Figure 3-4.



Figure 3-4

- ✧ Preview window switch. System support 1/4/8/9/16-window real-time preview. Please you need to have the proper rights to implement preview operation. You can not preview if you have no right to preview the either channel. See Figure 3-5.



Figure 3-5

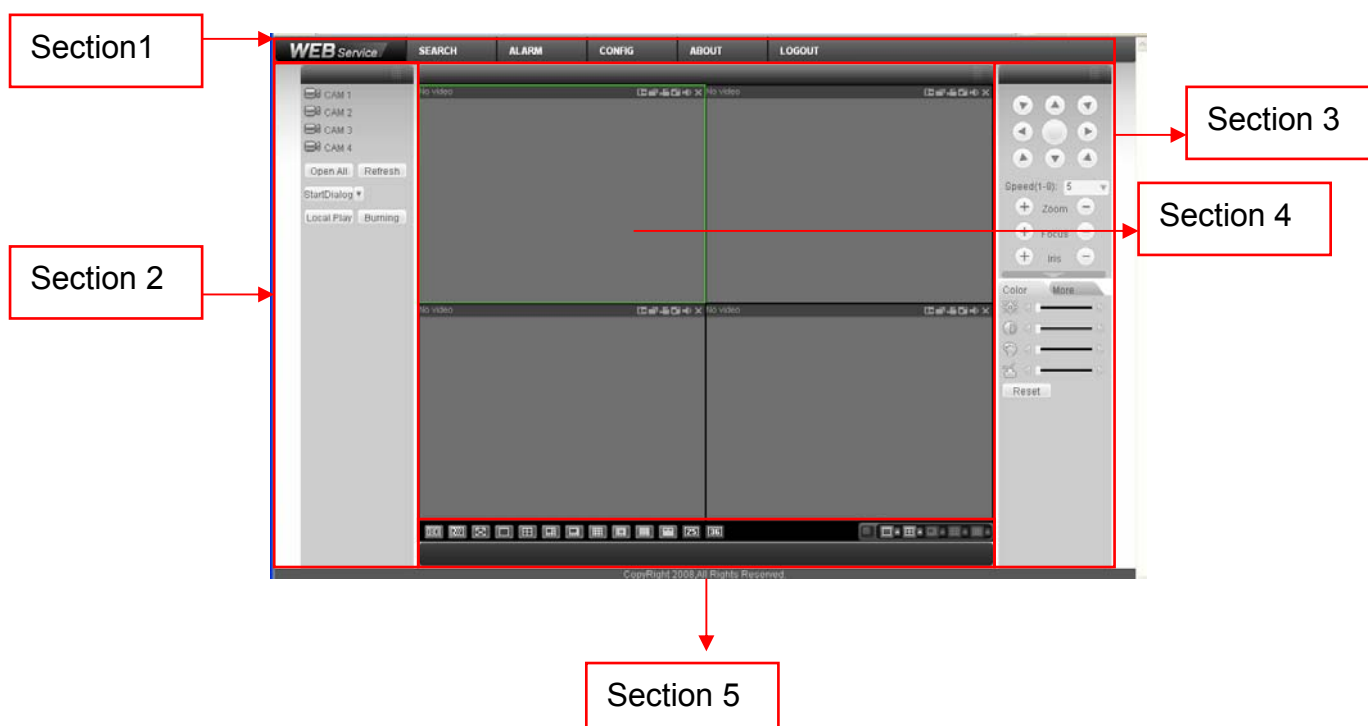


Figure 3-6

3.4 Burning

In Figure 3-6, click burning button. You can see an interface is shown as in Figure 3-7.

Click start searching button, you can view current CD information such as total space, free space and current status.

Please select the CD and then input password and set title.

Then you can select record channel, system max support 2 channels at the same time.

Finally, you can click start burning button.

Start searching: just like the detect button in DVR main menu,. System can display available CD and corresponding status.

- Preview: you can input relative information here. When playback, system can display information on player right side.
- Password. You can set playback password here. Please input password first and then click set button. After you enabled this function, you need to input password to begin playback each time.
- Channel number: if you select one channel, then system begins ordinary burning. If you have enabled two channels, then system begins PIP burning.
- Burning type: please note web end supports synchronize burning only.
- Mark: it is a index in the recorded file. You can use this function to search file and locate to the corresponding time. When playback, please right click menu to view mark information. Double click mouse you can go to the corresponding time to play.
- Customized overlay: during the burning, you can overlay customized information. When you playback, you can see customized information is on the top left corner. Each time, the overlay information lasts for five seconds. Usually you can use mark and overlay function together.

Before you enable burning, system still check current CD status.

There are following situations for you selected CD:

If there is backup CD, system prompts there is backup in process, system can not perform the burning at the same time.

If there is a burning in progress, you need to stop current burning first.

If there are all idle CD. The types include: erasable (new/old) and non-erasable (new). System can begin burning.

During the burning process, you can view corresponding burning information such as begin time, end time, total capacity, free capacity.

During the burning process, you can use mark and overlay function to symbolize the important position in the video. After completed the burning, you can use mark function to search desired position and view overlay to understand the video more clearly.

If you want to stop burning during the process, you can click stop burning button.

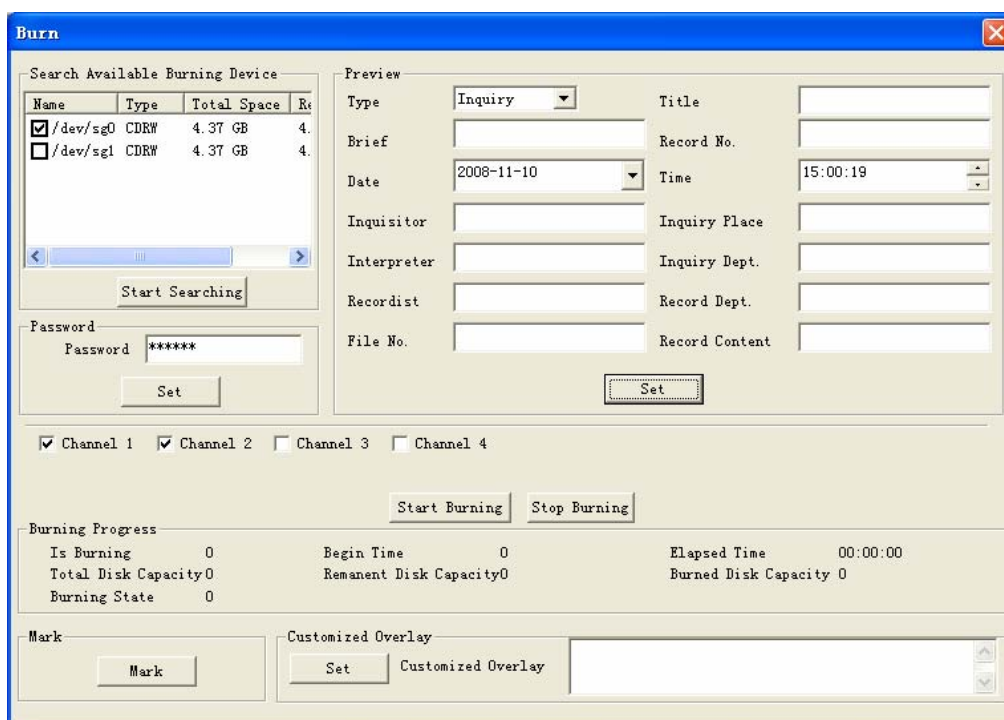


Figure 3-7

Note

For security reason, only the user of high-level can shut down the DVR. Do remember logging out the system in case there is vicious operation under your name!

For detailed operation introduction, please refer to our resource CD included in your package for electronic version of the user's manual.

Slight difference may be found in user interface.

All the designs and software here are subject to change without prior written notice.

Please visit our website for more information.