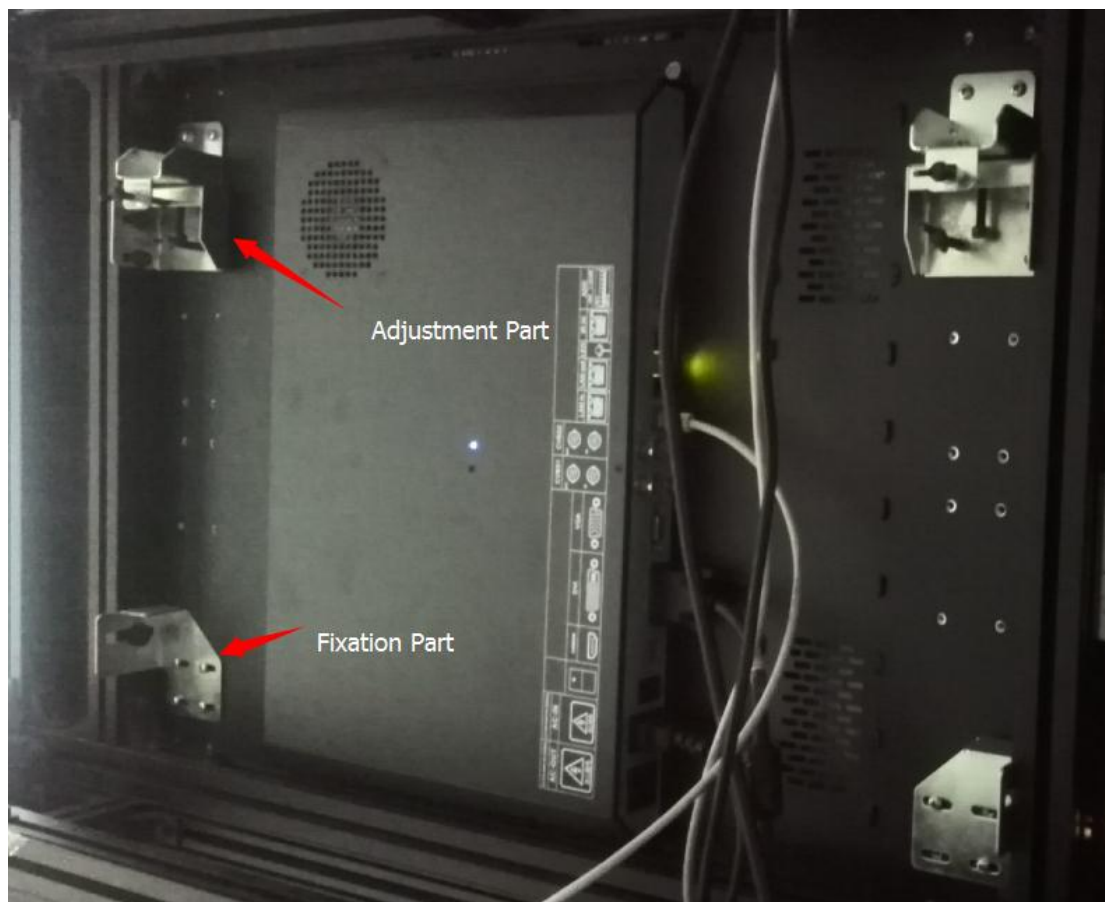
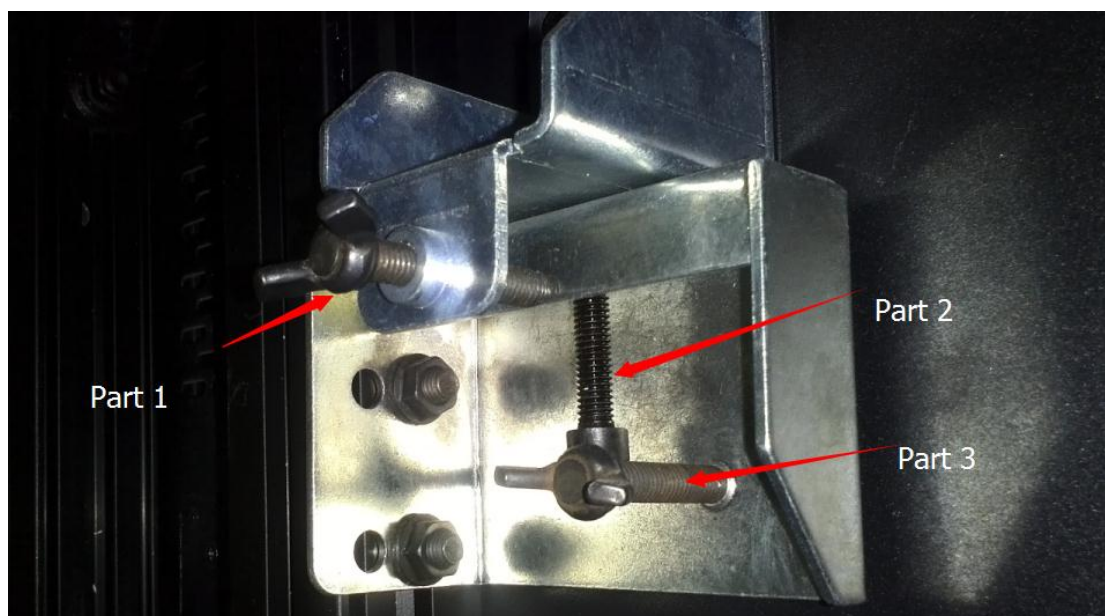


As you can see in the picture below, the upper 2 components are for adjustment of the position of the LCD, the bottom 2 ones are for fixation.



1. Here is the detailed picture of the adjustment parts. Part 1 is to pull the LCD backwards, Part 3 to push the LCD forwards and Part 2 to adjust the vertical positions. You can use these three parts to hold the LCD in a fit position.

**Attention 1: As part 1 and part 3 are for adjustment of the opposite directions, please stop and check when you feel resistance in order not to cause any damage to the LCD.**



2. In many circumstances, you also need to adjust the LCD position from right or left directions. You can see the mounting holes in the left picture, install the component shown in the right picture. When you tighten the screw, the LCD will go left. Also you can use the same way for the right position (just install one component in the mounting hole located on the right of the LCD).



3. Picture below shows the fixation parts. We have mentioned (step 1) the component in the former picture can adjust the LCD backwards and forwards. But as that component is located on the top of the LCD, we may still need to adjust the horizontal position in the bottom. That's when you can achieve here.

Install part2 and part 3, but keep part 2 loose because you need to push/pull part 1 to adjust the bottom of the LCD to the right position. After it is done, you can tighten these parts to fix the LCD.

