

Disk Manager User's Guide

Table of Contents

1	Product Overview	1
1.1	Overview	1
1.2	Features	1
2	Installation	2
3	Operation	4
3.1	Select Disk.....	4
3.2	Search Video.....	5
3.3	Live Preview	6
3.4	Play Control	7
3.5	Function Config.....	9

Important Safeguards and Warnings

Please read the following safeguards and warnings carefully before using the product in order to avoid damages and losses.

Note:

- Do not expose the device to lampblack, steam or dust. Otherwise it may cause fire or electric shock.
- Do not install the device at position exposed to sunlight or in high temperature. Temperature rise in device may cause fire.
- Do not expose the device to humid environment. Otherwise it may cause fire.
- The device must be installed on solid and flat surface in order to guarantee safety under load and earthquake. Otherwise, it may cause device to fall off or turnover.
- Do not place the device on carpet or quilt.
- Do not block air vent of the device or ventilation around the device. Otherwise, temperature in device will rise and may cause fire.
- Do not place any object on the device.
- Do not disassemble the device without professional instruction.

Warning:

- Please use battery properly to avoid fire, explosion and other dangers.
- Please replace used battery with battery of the same type.
- Do not use power line other than the one specified. Please use it properly. Otherwise, it may cause fire or electric shock.

Special Announcement

- This manual is for reference only.
- All the designs and software here are subject to change without prior written notice.
- All trademarks and registered trademarks are the properties of their respective owners.
- If there is any uncertainty or controversy, please refer to the final explanation of us.
- Please visit our website for more information.

1 Product Overview

1.1 Overview

This product is a PC software for video storage device hard disk, cooperate with SATA-USB box or memory stick reader. SATA-USB box is a device which can convert SATA interface to USB interface, and connect disk box (such as NVR, DVR, EVS) to PC. Now user can process record in hard disk: record playback, search record, record backup, slice, watermark and etc., for mobile DVR, it also supports view of vehicle pattern, format disk and etc. Meantime it supports search and operation of local record.

1.2 Features

This product has the following features:

- Multi-channel preview and playback, max 16 window simultaneous view.
- Preview support reverse play, quick play, slow play and other modes.
- Local snapshot and video cut, may immediately save valid record information.
- Sync play of videos in the same group.
- Compatible with search and play of each type of hard disk.
- Slicing preview.

2 Installation

Follow these steps to install software:

Step 1. Double click or right click “Open” to open Disk Manager installer, enter installation page, see Figure 2-1.



Figure 2-1

Step 2. Click Next, see Figure 2-2.

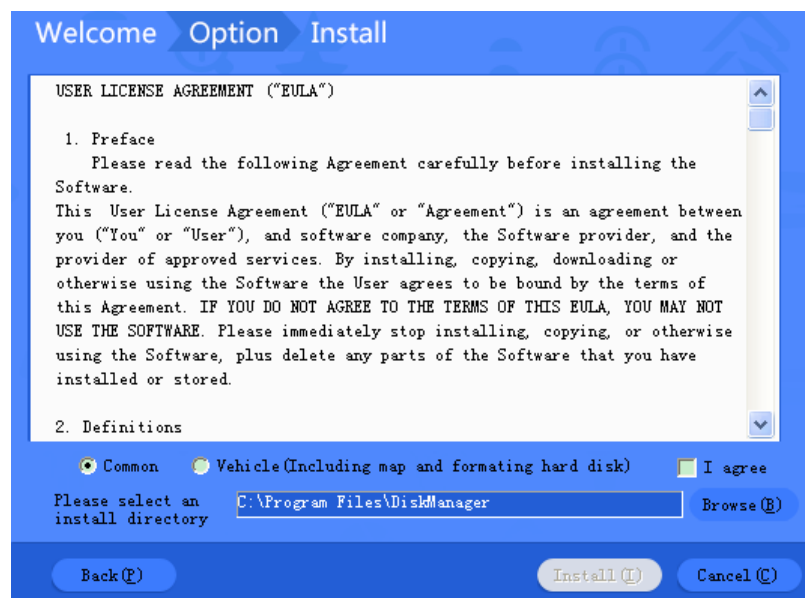


Figure 2-2

Step 3. Select type of installation.

- Check “Common”, to install common mode.
- Check “Vehicle” to install vehicle mode.

Step 4. Check “I agree” if you are agree with the above terms and conditions. Click “Browse” to select installation path. After you set path, click Install.

Step 5. Installation is complete. Click Enjoy Now to start the software. See Figure 2-3.

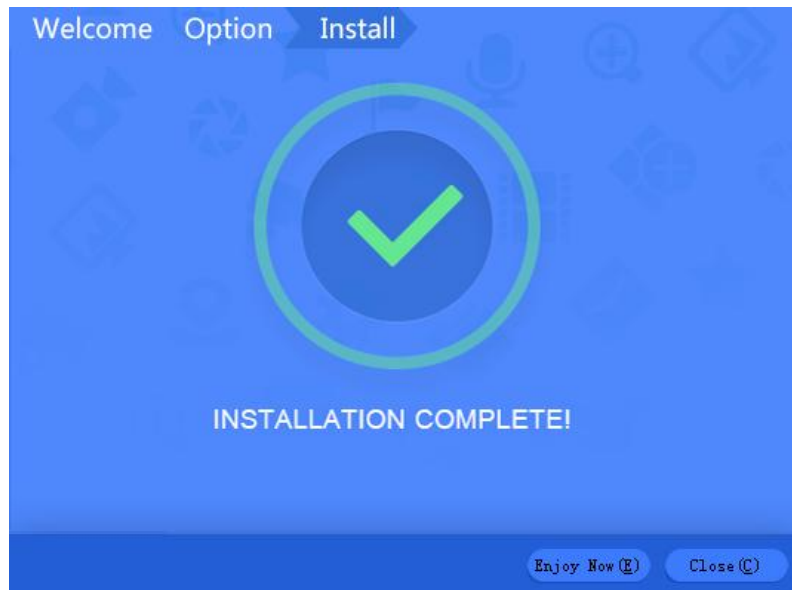


Figure 2-3

3 Operation

Enter the software, the system shows homepage, see Figure 3-1.

User can preview, search and manage disk record here.

错误！未找到引用源。

Figure 3-1

No.	Name	Note
1	Record Search	Select disk, search record in disk.
2	Video Search	According to channel, type, time and other criteria search record.
3	Video Preview	Set preview mode and view record.
4	Play Control	Control video play and cut, parity record.
5	Function Config	Config software parameter. For Vehicle version of software, there are also vehicle pattern and format options.

3.1 Select Disk

Search video file in disk, follow these steps:

Step 1. Click ▼ in record search area, select Local Disk or External Disk.

See Figure 3-2.

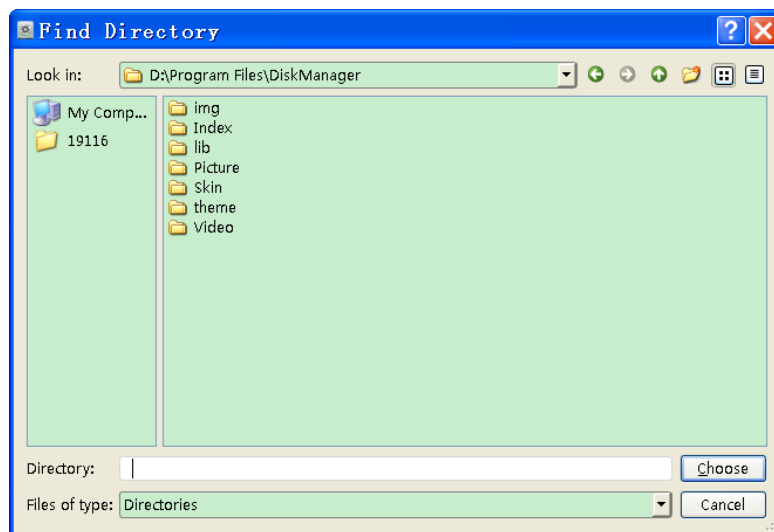


Figure 3-2

Step 2. Select directory, click Choose.

Step 3. Click **Search** to search video file in the selected directory. Listed info include channel, start time, end time, file path, type of the record. See Figure 3-3.

Channel	Start Time	End T
1	2013-06-19 23:50:00	2013-06-19
1	2013-06-19 23:50:00	2013-06-19
2	2013-06-19 23:50:00	2013-06-19
2	2013-06-19 23:50:00	2013-06-19
3	2013-06-19 23:50:00	2013-06-19
3	2013-06-19 23:50:00	2013-06-19
4	2013-06-19 23:50:00	2013-06-19
4	2013-06-19 23:50:00	2013-06-19
13	2013-06-19 23:50:00	2013-06-19
13	2013-06-19 23:50:00	2013-06-19

Figure 3-3

Step 4. Double click one row the open record of that row.

Note:

Check box in front, click Download to download selected record to local.

3.2 Search Video

3.2.1 Search by Filter

Click Filter tab, you can search record by channel, type, time.

See Figure 3-4.

Download 1 /1 < >

Filter Position

Channel All

Type

Start Time 00:00:00

End Time 00:00:00

Start Search Reset >>

Figure 3-4

Step 1. Select channel and type of record to search.

Step 2. Set start time and end time.

Step 3. Click , to search result in list.

Note:

Click to search filter to default.

3.2.2 Search by Position

Click Potion tab, set Search Time, to search record at specific time and open it. See Figure 3-5.

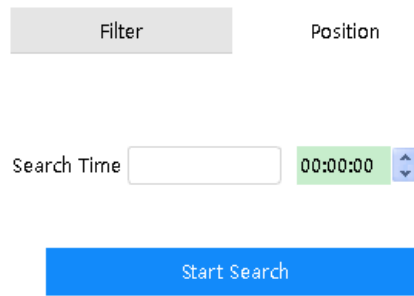


Figure 3-5

3.3 Live Preview

Set live preview mode, see Figure 3-6.

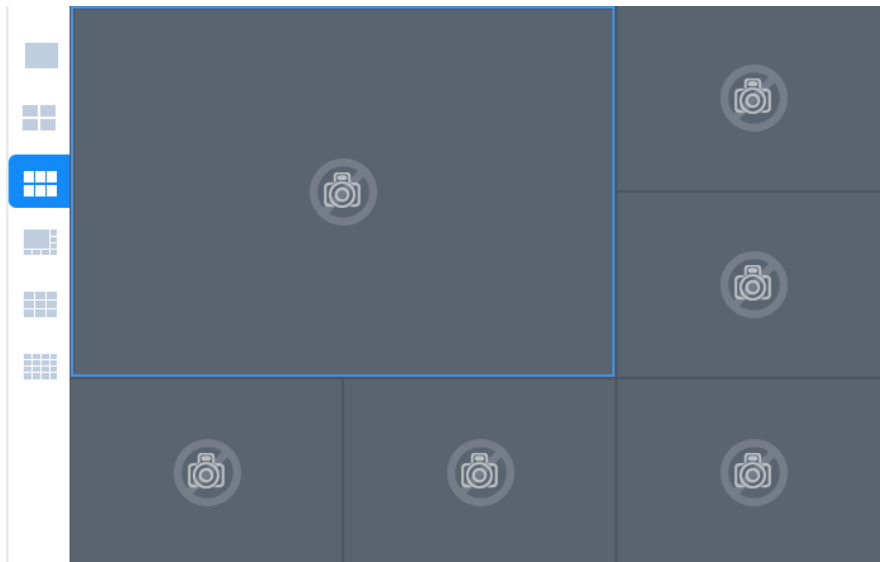








Figure 3-6

Icon	Name	Note
	1-split window	Double click record in list on the left, to preview in one single window.
	4-split window	Preview video in 4 windows.
	6-split window	Preview in 1 big window and 5 small windows.
	8-split window	Preview in 1 window and 7 small windows.
	9-split window	Preview in 9 windows in same-size.
	16-split window	Preview in 16 windows in same-size.

Multi-window display mode allow user to customize preview position:

Step 1. Click a window you want to set, its frame changes to blue.

Step 2. In list on the left, double click record to preview in the window.

Repeat this step for other windows, until each window has a record to preview.

Each window has drag, snapshot and close functions at its upper-right corner.

Tips:

Double click one window, and it will become 1-split mode. Double click it again to return to original mode.

3.4 Play Control

Reverse play, quick play, slow play record in window. See Figure 3-7.

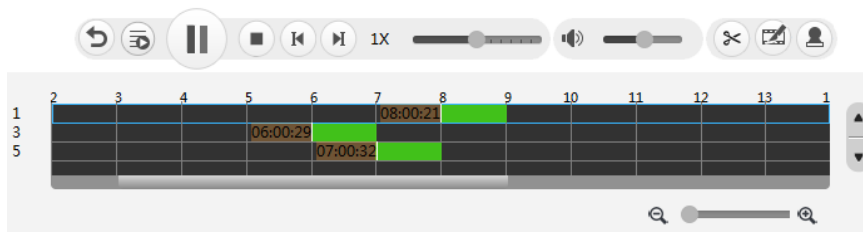





Figure 3-7

Icon	Name	Note
	Reverse	Click this button, it changes to blue, and all records in video windows start reverse play.
	Sync Play	Click this button, double click any record in list on the left, start to play all records in the same group with the record. Note: All records with start time interval within 2s are in one group.
	Play, Pause	Click this button, play or pause records of all windows.
	Stop	Click this button, stop records of all windows.
	Previous Group, Previous Frame	Click this button, start to play record in previous group (or frame). Note: During pause, it is shown as "previous frame". During playing, it is shown as "previous group".
	Next Group, Next Frame	Click this button, start to play record in next group (or frame).
	Play Speed	Adjust record play speed.
	Volume	Adjust record volume. Click , switch to mute
	Cut	Click this button, and select time period to cut on time axis below, click this button again to cut and save. <ul style="list-style-type: none"> • Normal cut, see Figure 3-8. • No record when you cut, see Figure 3-9.

Icon	Name	Note
	Slice	For long time record, you can view record in different periods, which largely shorten playback speed, and can faster position point of time. 1. In list select record to slice by right clicking on record and selecting Slice. 2. In time axis, set time range to slice. 3. Click this button, window will show image of each time point. 4. Double click one image, record will play start from this point of time.
	Watermark	Click this button, to check watermark records in all windows.
	Time Axis Size	Zoon in or out time axis.

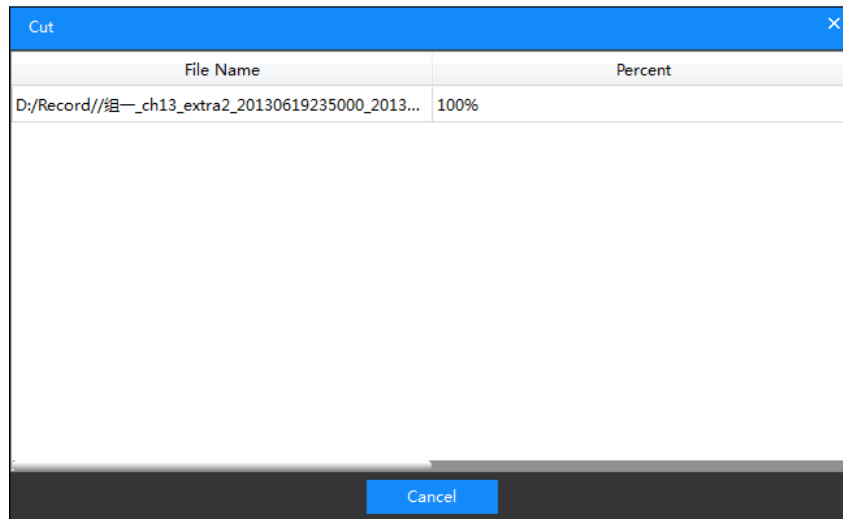


Figure 3-8

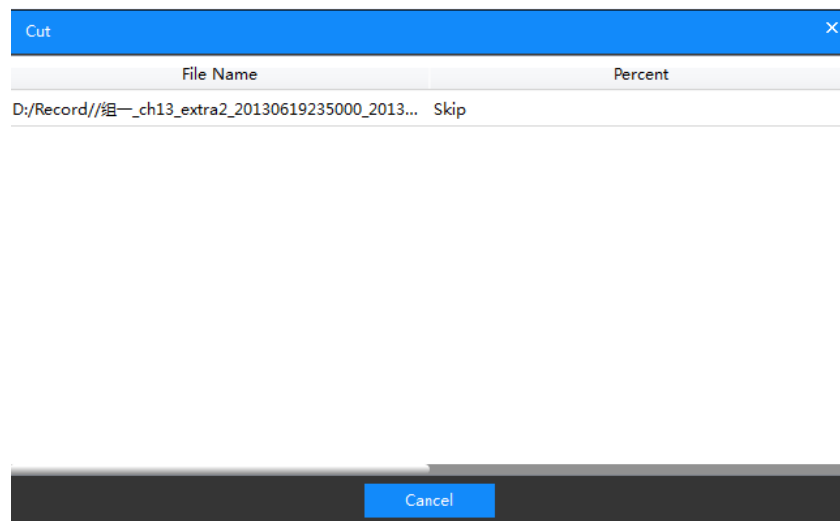



Figure 3-9

3.5 Function Config

3.5.1 Map

Click , to view vehicle pattern and geographic position in selected mobile hard disk, see Figure 3-10.

In video list, select one row of record, right click starting position preview. If this record is GPS record, then auto pop up Figure 3-10. If it is not GPS record, then pop up Figure 3-11.

Note:

This function is for vehicle version only.

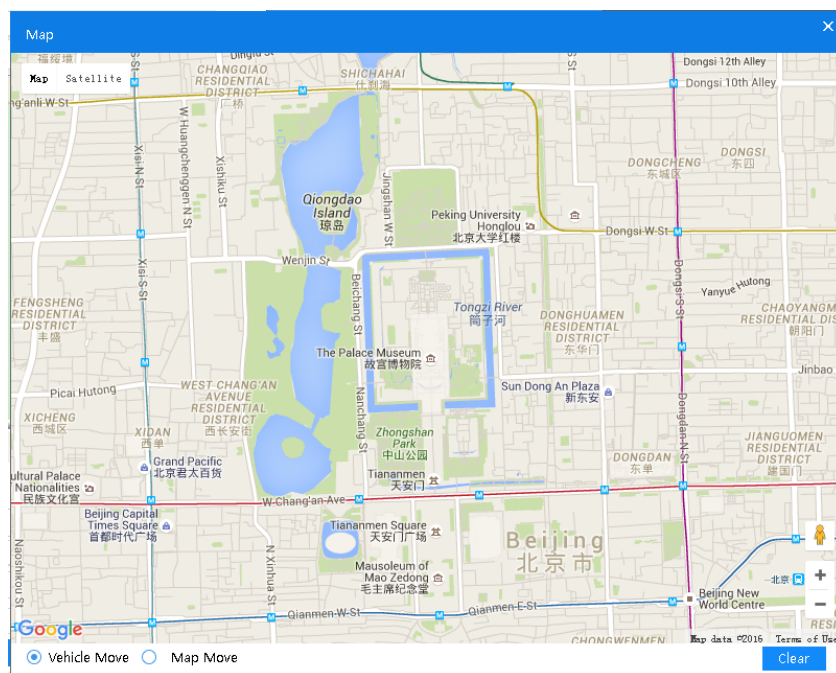

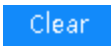


Figure 3-10

- Check “Vehicle Move”: map is fixed, the vehicle moves on map and draw pattern of vehicle.
- Check “Map Move”: vehicle is fixed, the map moves and draw pattern of vehicle.

Note:

Only if you check Pattern Display in Map setup, you can see pattern of vehicle on map.

Icon	Name	Note
	Zoom in, out	Zoom in or out map.
	Clear	Clear pattern on map.

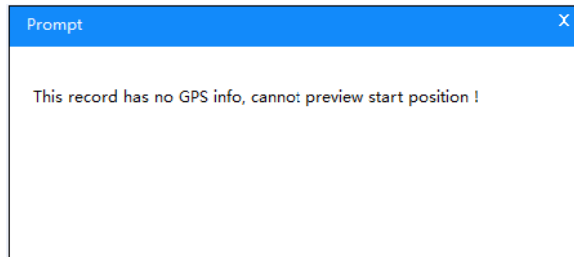



Figure 3-11


3.5.2 Format

Click  to format vehicle hard disk.

Note:

This function is for vehicle version only.

3.5.3 Config

Click , to set basic parameters. The page real-time saves all config, and once you close this page and open it again, you can see parameters stay same at last time you close it.

3.5.3.1 General

Select Config>General, see Figure 3-12.

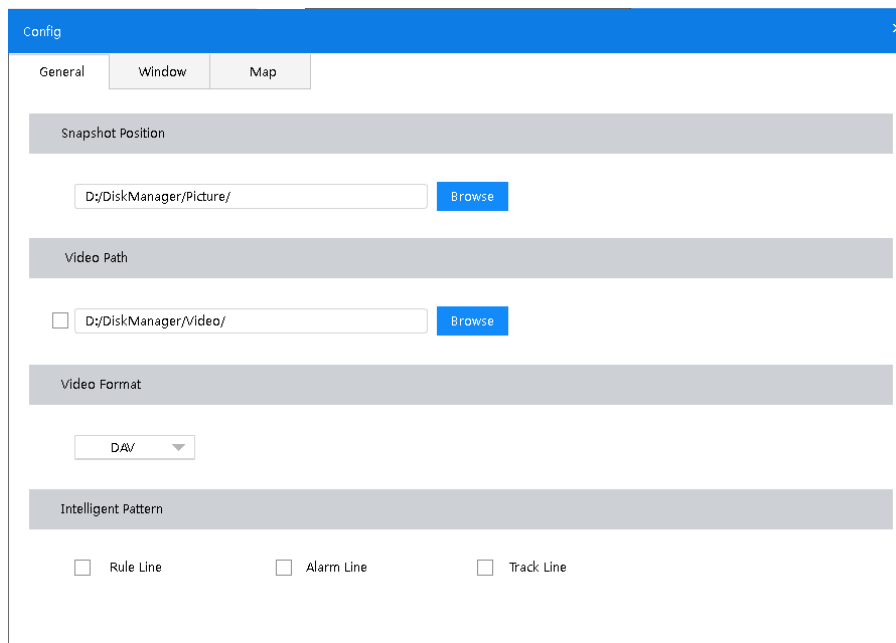



Figure 3-12

This interface allow you to set:

- Snapshot position: Click , select position to save snapshot.

- Video path: Click Browse, select path to store video. Check box in front, so downloaded record will be saved in this path. If not check box, you can select path during your operation.
- Video format: Select video format, support DAV and AVI.
- Intelligent pattern: Check pattern you need, including rule line, alarm and track line.
Note: For record with intelligent pattern function only.

3.5.3.2 Window Config

Select Config>Window, see Figure 3-13.

Select type of window, and set channel no. in each window. Valid for sync play mode only.

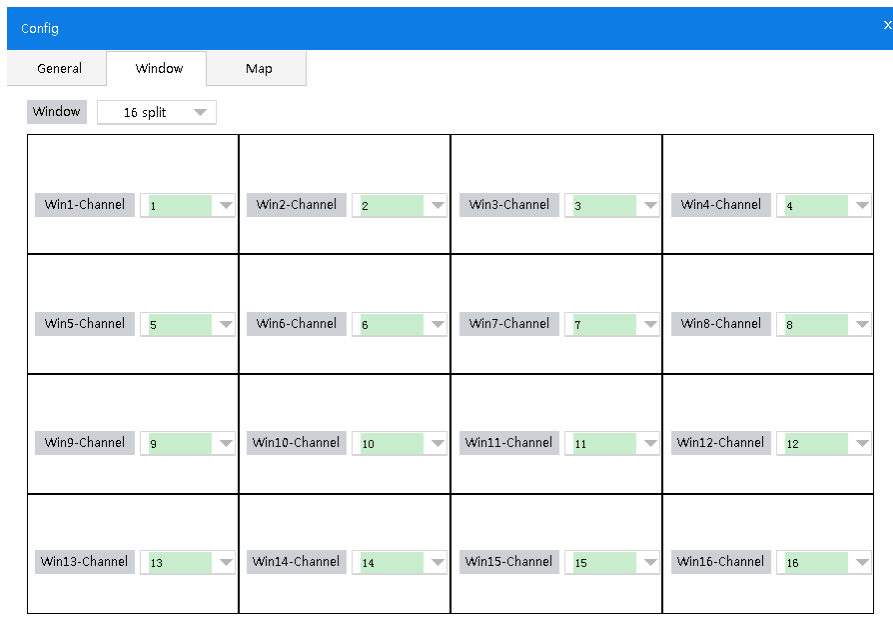


Figure 3-13

3.5.3.3 Map Config

Select Config>Map, see Figure 3-14.

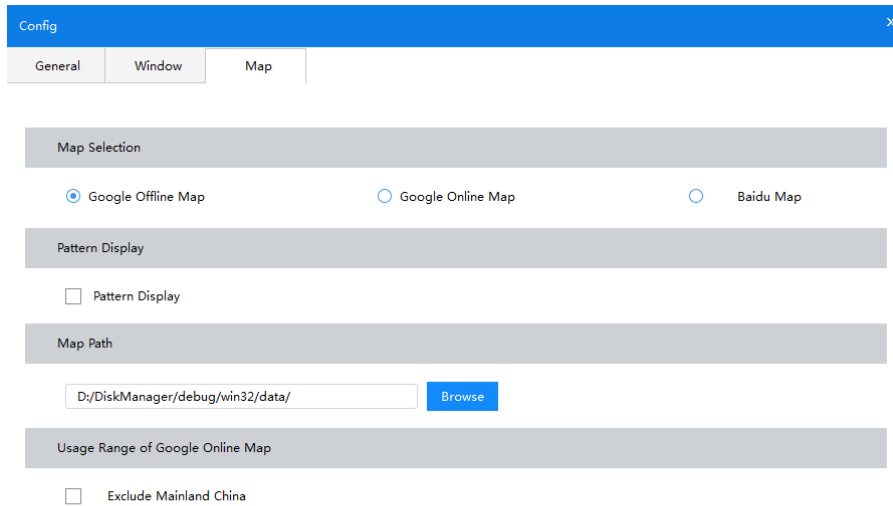


Figure 3-14

This interface allow you to set:

- Map selection: select map type, there are Google offline map, Google online map and Baidu map.
- Pattern display: Check “Pattern Display”, show vehicle pattern on map.
- Map path: Set offline map path.
- Usage Range of Google Online Map: Check “Exclude Mainland China” to apply to other areas excluding Mainland China. If not check, it will be applied to Mainland China.

Note

- For detailed operation introduction, please refer to our resource CD included in your package for electronic version of the *User’s Manual*.
- Slight difference may be found in user interface.
- All the designs and software here are subject to change without prior written notice.
- All trademarks and registered trademarks mentioned are the properties of their respective owners.
- If there is any uncertainty or controversy, please refer to the final explanation of us.
- Please visit our website for more information.