



HIKVISION

iVMS-4200 Client Software

Quick Start Guide

UD.6L0202B2174A01

Quick Start Guide

COPYRIGHT ©2015 Hangzhou Hikvision Digital Technology Co., Ltd.

ALL RIGHTS RESERVED.

Any and all information, including, among others, wordings, pictures, graphs are the properties of Hangzhou Hikvision Digital Technology Co., Ltd. or its subsidiaries (hereinafter referred to be “Hikvision”). This user manual (hereinafter referred to be “the Manual”) cannot be reproduced, changed, translated, or distributed, partially or wholly, by any means, without the prior written permission of Hikvision. Unless otherwise stipulated, Hikvision does not make any warranties, guarantees or representations, express or implied, regarding to the Manual.

About this Manual

This Manual is applicable to iVMS-4200 Client Software.

The Manual includes instructions for using and managing the product. Pictures, charts, images and all other information hereinafter are for description and explanation only. The information contained in the Manual is subject to change, without notice, due to firmware updates or other reasons. Please find the latest version in the company website

[\(http://overseas.hikvision.com/en/\)](http://overseas.hikvision.com/en/).

Please use this user manual under the guidance of professionals.

Trademarks Acknowledgement

HIKVISION and other Hikvision’s trademarks and logos are the properties of Hikvision in various jurisdictions. Other trademarks and logos mentioned below are the properties of their respective owners.

Legal Disclaimer

TO THE MAXIMUM EXTENT PERMITTED BY APPLICABLE LAW, THE PRODUCT DESCRIBED, WITH ITS HARDWARE, SOFTWARE AND FIRMWARE, IS PROVIDED “AS IS”, WITH ALL FAULTS AND ERRORS, AND HIKVISION MAKES NO WARRANTIES, EXPRESS OR IMPLIED, INCLUDING WITHOUT LIMITATION, MERCHANTABILITY, SATISFACTORY QUALITY, FITNESS FOR A PARTICULAR PURPOSE, AND NON-INFRINGEMENT OF THIRD PARTY. IN NO EVENT WILL HIKVISION, ITS DIRECTORS, OFFICERS, EMPLOYEES, OR AGENTS BE LIABLE TO YOU FOR ANY SPECIAL, CONSEQUENTIAL, INCIDENTAL, OR

INDIRECT DAMAGES, INCLUDING, AMONG OTHERS, DAMAGES FOR LOSS OF BUSINESS PROFITS, BUSINESS INTERRUPTION, OR LOSS OF DATA OR DOCUMENTATION, IN CONNECTION WITH THE USE OF THIS PRODUCT, EVEN IF HIKVISION HAS BEEN ADVISED OF THE POSSIBILITY OF SUCH DAMAGES.

REGARDING TO THE PRODUCT WITH INTERNET ACCESS, THE USE OF PRODUCT SHALL BE WHOLLY AT YOUR OWN RISKS. HIKVISION SHALL NOT TAKE ANY RESPONSIBILITIES FOR ABNORMAL OPERATION, PRIVACY LEAKAGE OR OTHER DAMAGES RESULTING FROM CYBER ATTACK, HACKER ATTACK, VIRUS INSPECTION, OR OTHER INTERNET SECURITY RISKS; HOWEVER, HIKVISION WILL PROVIDE TIMELY TECHNICAL SUPPORT IF REQUIRED.

SURVEILLANCE LAWS VARY BY JURISDICTION. PLEASE CHECK ALL RELEVANT LAWS IN YOUR JURISDICTION BEFORE USING THIS PRODUCT IN ORDER TO ENSURE THAT YOUR USE CONFORMS THE APPLICABLE LAW. HIKVISION SHALL NOT BE LIABLE IN THE EVENT THAT THIS PRODUCT IS USED WITH ILLEGITIMATE PURPOSES.

IN THE EVENT OF ANY CONFLICTS BETWEEN THIS MANUAL AND THE APPLICABLE LAW, THE LATER PREVAILS.

Contents

| | |
|--|----|
| 1. Overview | 4 |
| 2. System Requirements..... | 4 |
| 3. Deployment Schemes | 4 |
| 3.1 In the Local Area Network..... | 5 |
| 3.1.1 A Simplified Scheme in LAN | 5 |
| 3.1.2 A Complete Scheme in LAN..... | 6 |
| 3.2 In the Wide Area Network | 7 |
| 3.2.1 Static IP in WAN..... | 7 |
| 3.2.2 Dynamic IP in WAN..... | 8 |
| 4. Installation and Uninstallation | 8 |
| 4.1 Installation..... | 8 |
| 4.2 Uninstallation | 12 |
| 5. Quick Start..... | 13 |
| 5.1 User Registration and Login | 13 |
| 5.2 Start Wizard..... | 14 |
| 5.2.1 Wizard for Importing Device | 14 |
| 5.2.2 Wizard for Video Wall..... | 21 |
| 5.3 Control Panel..... | 23 |
| 5.4 Live View | 26 |
| 5.5 Recording | 28 |
| 5.6 Playback | 31 |
| 5.6.1 Normal Playback..... | 31 |
| 5.6.2 Event Playback..... | 34 |
| 5.6.3 Synchronous Playback..... | 35 |
| 5.7 E-map | 35 |
| 5.7.1 Adding an E-map | 36 |
| 5.7.2 Hot Spot Function | 37 |
| 5.7.3 Hot Region Function..... | 40 |
| 5.8 Web Browsing | 42 |
| 6. Exit System | 43 |

1. Overview

This guide provides only brief instructions on the installation, uninstallation, and some basic operations such as the live view, record and playback of devices via iVMS-4200. For detailed information of how to use the software, please refer to the *User Manual of iVMS-4200*.

2. System Requirements

Operating System: Microsoft Windows 7/Windows 2008 (32-bit or 64-bit), Windows XP/Windows 2003 (32-bit), Windows 8/Windows 8.1/Windows Server 2012/Windows 10 (64-bit)

CPU: Intel Pentium IV 3.0 GHz or above

Memory: 1G or above

Video Card: RADEON X700 Series or above

GPU: 256 MB or above

Note: For high stability and good performance, these above system requirements must be met.

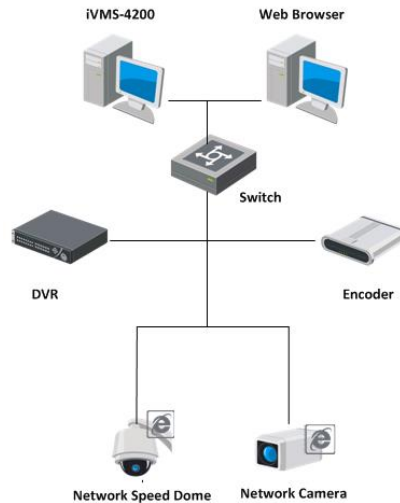
3. Deployment Schemes

iVMS-4200 can be used in the local area network (LAN) and the wide area network (WAN). In this document, only some of the connection deployment schemes are displayed.

Note: In the real situation, the devices connected, such as the DVRs, NVRs, network cameras, etc., are scalable.

3.1 In the Local Area Network

3.1.1 A Simplified Scheme in LAN



Application Scenario:

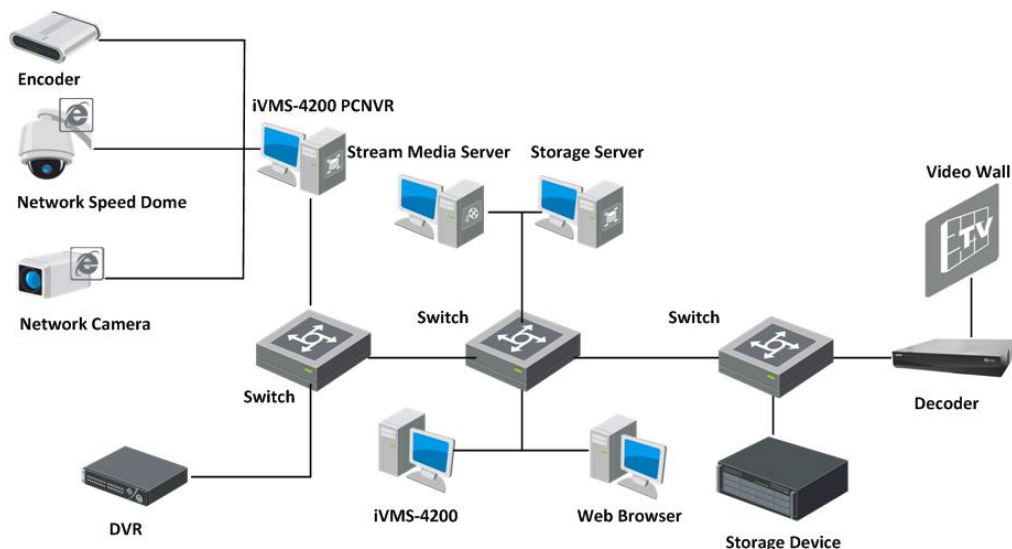
1. Only one or small quantities of clients need to get video stream from the devices.
2. The client and devices are in the same local subnet.

Hardware Required:

1. Network cameras, DVRs, etc.
2. PC installed with iVMS-4200 client.
3. Switch or router.

This deployment scheme is convenient and cost-effective. Only the iVMS-4200 client software is required and you can get direct access to the connected devices, such as the network cameras, DVRs, etc.

3.1.2 A Complete Scheme in LAN



Application Scenario:

1. Multiple clients need to get video stream from the devices.
2. There is no hard disk on the device side or there are disks on the device side, but the video files need to be backed up for extra insurance.

Hardware Required:

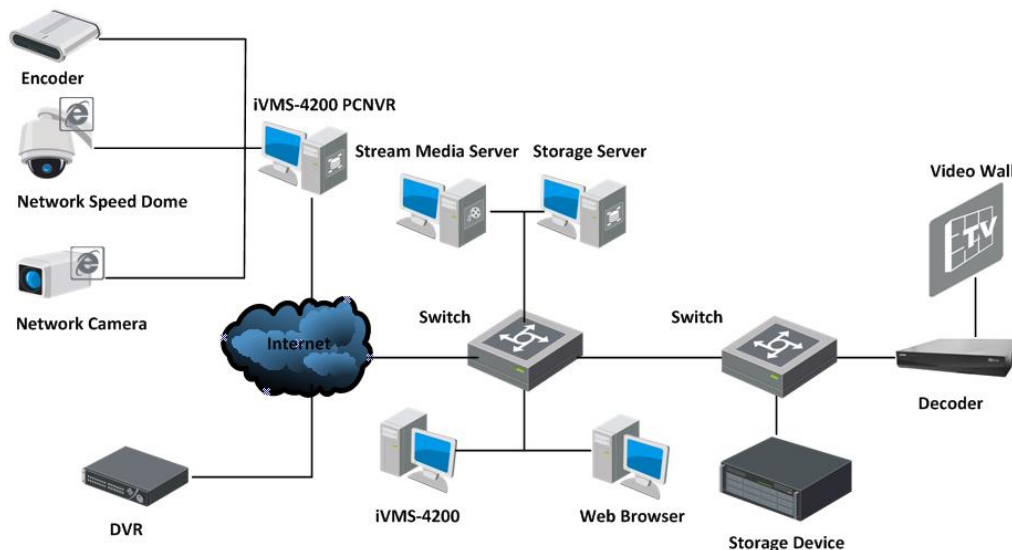
1. Network cameras, DVRs, etc.
2. PCs installed with iVMS-4200 client, iVMS-4200 PCNVR, Stream Media Server and Storage Server.
3. Switch or router.

The DVR, HDVR, NVR, iVMS-4200 PCNVR can connect to and manage the cameras, speed domes, video encoders, etc., and the iVMS-4200 client can be used to manage the DVR, HDVR, NVR, PCNVR which provide relatively complete function of the management.

The stream media server can be adopted to forward the video stream so as to lower the network load of the devices. The video files can be stored on the HDDs of the local device, or on the remote storage server. You can also access the client through the web browsing and do some basic operations, including live view, playback, etc.

3.2 In the Wide Area Network

3.2.1 Static IP in WAN



Application Scenario:

1. The devices need to be accessed in WAN.
2. Static IP addresses are assigned to the connected devices in WAN.

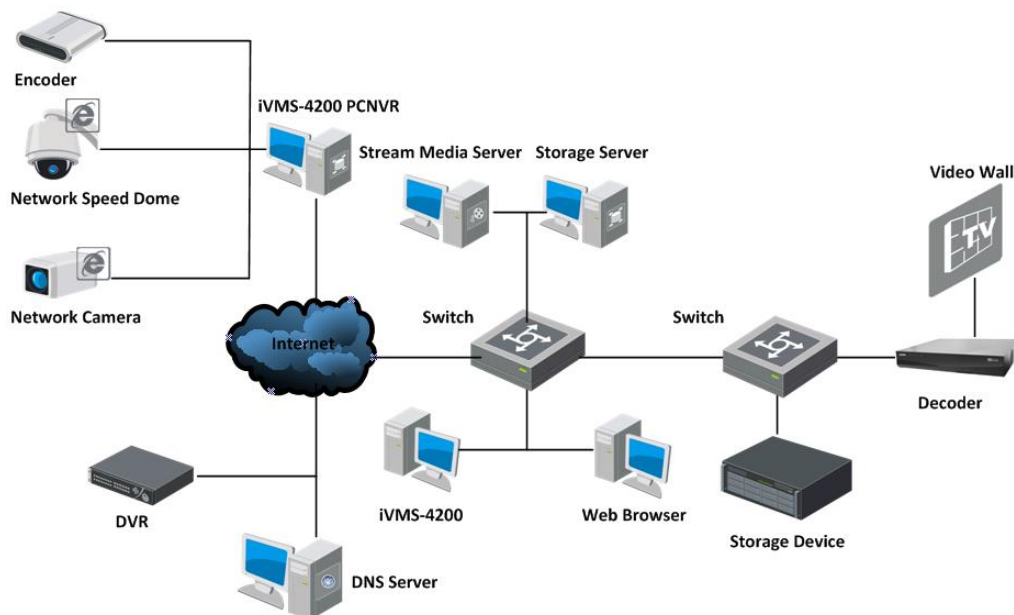
Hardware Required:

1. Network cameras, DVRs, etc.
2. PCs installed with iVMS-4200 client, iVMS-4200 PCNVR, Stream Media Server and Storage Server.
3. Switch or router.

Static IP address is assigned to the device in WAN and the iVMS-4200 client can access the device directly through the static IP address. It is costly when there are multiple devices connected.

You can adopt the router to connect to the Internet, assign the static IP address to the router, and then get access to the devices through the router static IP address and port No..

3.2.2 Dynamic IP in WAN



Application Scenario:

1. The devices need to be accessed in WAN.
2. The devices can be accessed through device domain names (registered on DNS Server) in WAN.

Hardware Required:

1. Network cameras, DVRs, etc.
2. PCs installed with iVMS-4200 client, iVMS-4200 PCNVR, Stream Media Server and Storage Server.
3. Switch or router.

You can register domain names for the devices on the DNS server, such as Peanuthull, DynDNS, HiDDNS, etc., and then get access to the devices through the device domain names.


When there are multiple devices connected to the Internet via the router, you can configure domain name on the router, and then get access to the devices through the router domain name and port No., thus to reduce the cost of the domain name.

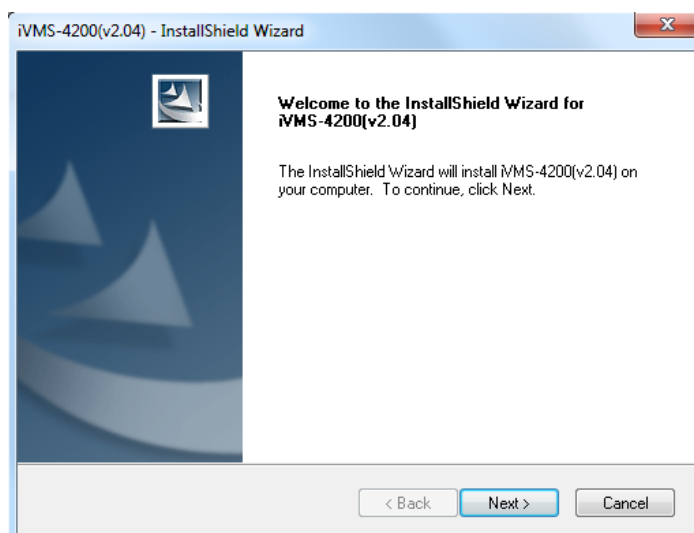
4. Installation and Uninstallation

4.1 Installation

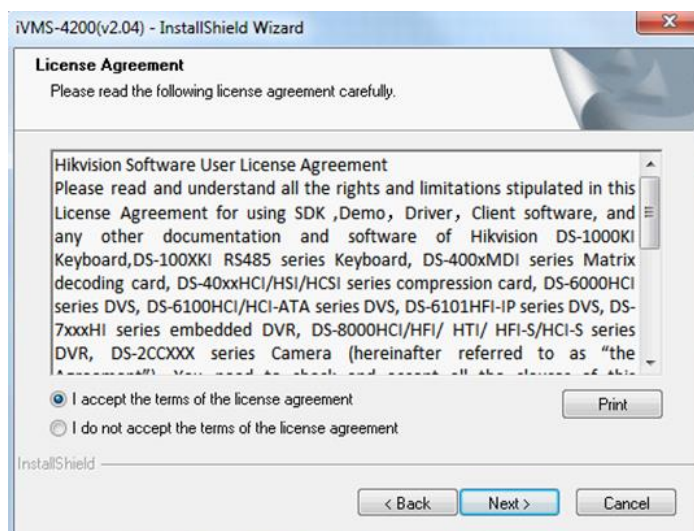
Insert the installation media into the appropriate computer.

Perform the following steps to install the iVMS-4200 client software.

1. Double-click the program file  to enter the welcome panel of the InstallShield Wizard. Click **Next** button to start the InstallShield Wizard.



2. Read the License Agreement. Click **Print** button if you want to print the license agreement.

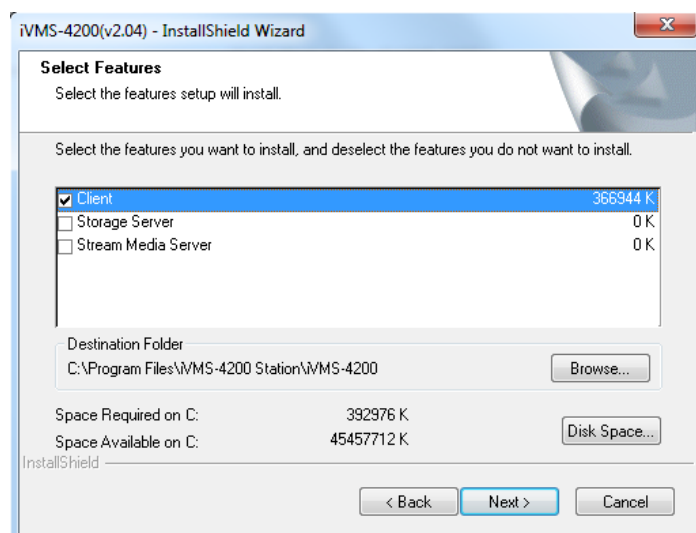


If you accept the terms of the license agreement, click the radio button **I accept the terms of license agreement**.

Click **Next** to continue.

Otherwise click the radio button **I do not accept the terms of the license agreement**, and then click **Cancel** to cancel the installation

3. On the next panel, you are prompted to select the function module to install.



Storage Server: The storage server performs as a NVR installed on the PC and the video files can be stored on the storage server.

Stream Media Server: The video stream can be forwarded through the stream media server, thus to lower the network load of the device.

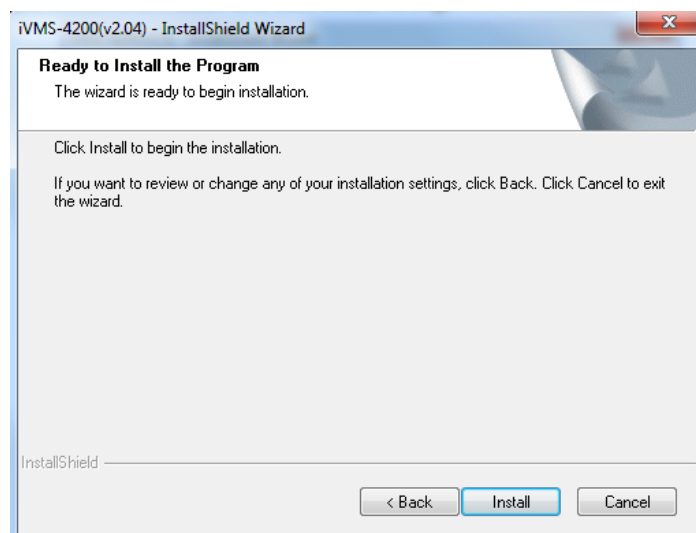
Set installation directory where the client software is to be installed. You can either accept the default directory that is displayed, or click **Browse** button and select a different directory.

You can also click **Disk Space** button to choose the disk drive to install the software, and check the space information of the disk on the panel.

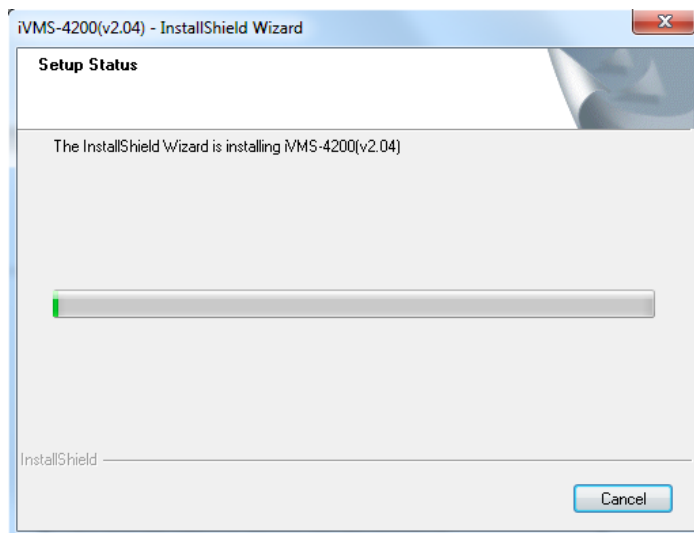
Note: The default directory is *C:\Program Files\iVMS-4200 Station\iVMS-4200*.

Click **Next** button to continue.

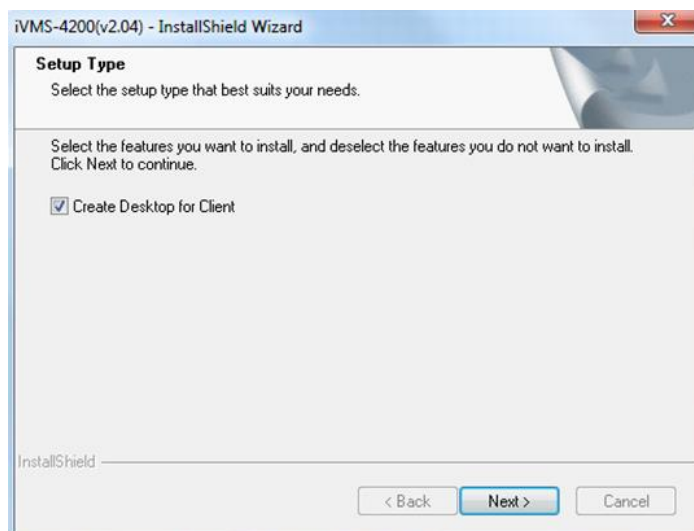
4. Read the pre-install information and click **Install** button to begin the installation.



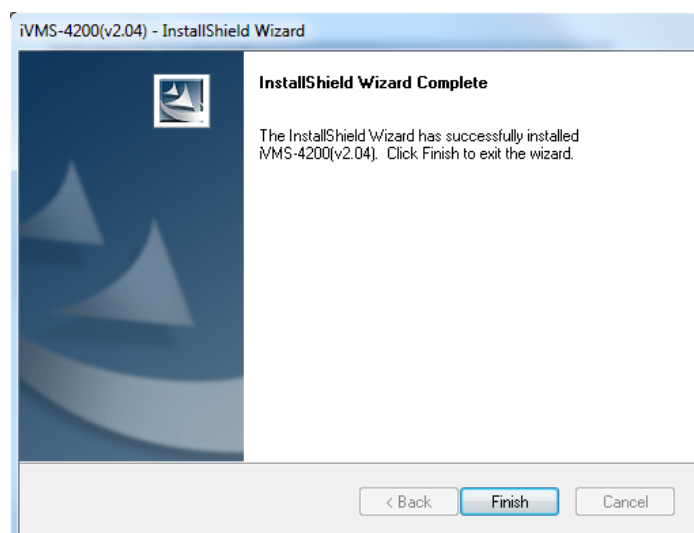
5. A panel indicating the progress of the installation is displayed. A percentage completion bar is updated as the installation progresses.




6. Select the setup type according to your need.
You can check the checkbox **Create Desktop for Client** to create a shortcut icon on the desktop for the client software.



7. Read the post-install information and click **Finish** button.



4.2 Uninstallation

Double-click the program file  again, select **Remove**, click **Next** button and click **Yes** to uninstall the iVMS-4200 according to the prompts.

5. Quick Start

5.1 User Registration and Login

For the first time to use iVMS-4200 client software, you need to register a super user for login.

Steps:

1. Input the super user name and password. The software will judge password strength automatically, and we highly recommend you to use a strong password to ensure your data security.
2. Confirm the password.
3. Optionally, check the checkbox **Enable Auto-login** to login the software automatically.
4. Click **Register** button. Then, you can login the software as the super user.



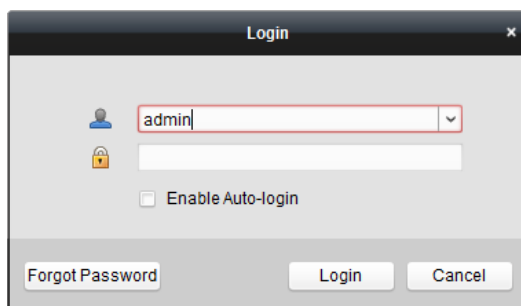
- ◆ A user name cannot contain any of the following characters: / \ : * ? " < > |. And the length of the password cannot be less than 6 characters.
- ◆ For your privacy, we strongly recommend changing the password to something of your own choosing (using a minimum of 8 characters, including upper case letters, lower case letters, numbers, and special characters) in order to increase the security of your product.
- ◆ Proper configuration of all passwords and other security settings is the responsibility of the installer and/or end-user.

When opening iVMS-4200 after registration, you can login the client software with the registered user name and password.

Steps:

1. Input the user name and password you registered.

Note: If you forget your password, please click **Forgot Password** button and remember the encrypted string in the pop-up window. Contact your distributor or our technical support and send the encrypted string to him to reset your password.
2. Optionally, check the checkbox **Enable Auto-login** to login the software automatically.
3. Click **Login** button.



5.2 Start Wizard

5.2.1 Wizard for Importing Device

The start wizard will pop up to guide you to go through the basic operations of the client software if you have not gone through it completely, such as adding devices, importing devices into groups, configuring record schedule, etc.

Perform the following steps to go through the wizard and study the operations provided.

Step 1: Start Guide

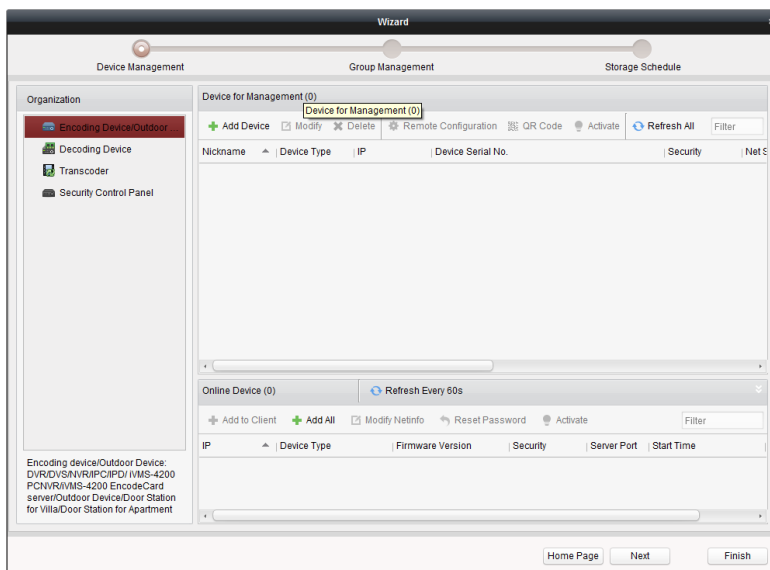
Click **Device and Storage Schedule Configuration** button to start the guide.

You can also click **Close** button to exit the wizard.



Step 2: Adding Devices

Devices such as network cameras, encoders, decoders, DVRs, NVRs, security control panel, video intercom device, should be added to the client for the remote configuration and management, such as live view, playback, alarm settings, video wall settings, etc.



You can select adding encoding device or decoding device.

Encoding device includes DVR, encoder, NVR, IP camera, IP dome, iVMS-4200 PCNVR and iVMS-4200 encoding server, etc.

Decoding device includes decoder and iVMS-4200 decoding server.

You can add the device in the following ways:

- Adding Online Devices
- Adding Devices by IP Address/Domain
- Adding Devices by IP Segment
- Adding Devices by IP Server
- Adding Devices by HiDDNS
- Batch Adding Devices

Creating the Password

Purpose:

For some devices, you are required to create the password to activate them before they can be added to the software and work properly.

Note: This function should be supported by the device.

Steps:

1. Enter the Device Management page.
2. On the **Device for Management** or **Online Device** area, check the device status (shown on **Security** column) and select an inactive device.

| Online Device (4) | | | | | | | Refresh Every 60s |
|---|-----------------|---------------------|----------|-------------|---------------------|----|-------------------|
| + Add to Client + Add All ☑ Modify Netinfo ↻ Reset Password 💡 Activate Filter | | | | | | | |
| IP | Device Type | Firmware Version | Security | Server Port | Start Time | Ac | |
| 10.16.1.102 | DSI-6701HFH/V | V1.0.0build 150730 | Active | 8000 | 2015-08-17 14:57:51 | Nc | |
| 192.168.1.64 | DS-2ZMN3006(YF) | V5.3.0build 150323 | Inactive | 8000 | 2015-08-17 16:01:02 | Nc | |
| 10.16.1.93 | | V5.3.10build 150729 | Active | 8000 | 2015-08-17 09:02:35 | Nc | |

| Device for Management (13) | | | | | | |
|---|---------------|--|----------|-----------------|--------|--|
| + Add Device ✎ Modify ✖ Delete ⚙ Remote Configuration 📄 QR Code 🔥 Activate 🔄 Refresh All 🔍 Filter | | | | | | |
| Nickname | IP | Device Serial No. | Security | Resource Usa... | HDD St | |
| 4124 Counting | 10.11.37.197 | | | | | |
| 5220 | 172.10.18.150 | DS-2DF5220S-D420150211CCWR485342073B | Risky | | | |
| 9664 | 10.16.1.13 | 1620141031AARR483862763WCVU | | | | |
| Intersection | 10.99.105.140 | DS-9616N-ST1620130301BBRR407129395WCVU | Risky | | | |
| Traffic IPC | 172.10.21.202 | | | | | |
| Traffic Speed ... | 10.10.38.155 | iDS-TCS215-F520150227CCCH505266451B | Risky | | | |
| 7286 | 10.16.1.199 | DS-2DF7286-A20141110CCWR481390656C | Strong | | | |
| IPD Traffic | 172.10.21.180 | iDS-2DF8223I-A20141226CCCH496681277B | Risky | | | |
| 2412 | 10.16.1.251 | DS-2CD2412F-IW20140118CCCH450047294 | Risky | | | |
| IPC 01 | 10.16.2.64 | | Inactive | | | |

3. Click the **Activate** to pop up the Activation interface.
4. Create a password in the password field, and confirm the password.



STRONG PASSWORD RECOMMENDED– We highly recommend you create a strong password of your own choosing (using a minimum of 8 characters, including upper case letters, lower case letters, numbers, and special characters) in order to increase the security of your product. And we recommend you reset your password regularly, especially in the high security system, resetting the password monthly or weekly can better protect your product.

Activation

User Name: admin

Password:

Strong

Valid password range [8-16]. You can use a combination of numbers, lowercase, uppercase and special character for your password with at least two kinds of them contained.

Confirm Password:

5. Click **OK** button to create the password for the device. A “The device is activated.” window pops up when the password is set successfully.
6. Click **Modify Netinfo** to pop up the Modify Network Parameter interface.

Note: This function is only available on the **Online Device** area. You can change the device IP address to the same subnet with your computer if you need to add the device to the software.
7. Change the device IP address to the same subnet with your computer by either modifying the IP address manually or checking the checkbox of DHCP.
8. Input the password set in step 4 and click **OK** button to complete the network settings.

Adding Online Devices

The active online devices in the same local subnet with the client software will be displayed on the **Online Device** area. You can click the **Refresh Every 60s** button to refresh the information of the online devices.

Add One Online Device

Steps:

1. Select the devices to be added from the list.

Note: For the inactive device, you need to create the password for it before you can add the device properly. For detailed steps, please refer to *Section Creating the Password*.

2. Click **Add to Client** to open the device adding dialog box.
3. Input the required information.

Nickname: Edit a name for the device as you want.

Address: Input the device's IP address. The IP address of the device is obtained automatically in this adding mode.

Port: Input the device port No.. The default value is *8000*.

User Name: Input the device user name. By default, the user name is *admin*.

Password: Input the device password.



The password strength of the device can be checked by the software. For your privacy, we strongly recommend changing the password to something of your own choosing (using a minimum of 8 characters, including upper case letters, lower case letters, numbers, and special characters) in order to increase the security of your product. And we recommend you reset your password regularly, especially in the high security system, resetting the password monthly or weekly can better protect your product.

4. Optionally, you can check the checkbox **Export to Group** to create a group by the device name. All the cameras under the device will be imported to the corresponding group by default.
5. Click **Add** button to add the device.

Note: If you want to add an offline device, you can check the checkbox **Add Offline Device** and

enter the number of cameras and alarm inputs of the device.

Add Multiple Online Devices

If you want to add multiple online devices to the client software, click and hold *Ctrl* key to select multiple devices, and click **Add to Client** to open the device adding dialog box. In the pop-up message box, enter the user name and password for the devices to be added.

Add All the Online Devices

If you want to add all the online devices to the client software, click **Add All** and click **OK** button in the pop-up message box. Then enter the user name and password for the devices to be added.

Modify Network Information

Select the device from the list, click **Modify Netinfo**, edit the network parameters of the device, e.g., DHCP, IP address, port No. and gateway, input the admin password of the device and click **OK** button to save the settings.

Reset Password

According to the different devices, the software provides three different methods for restoring the default password or resetting the password.

Select the device from the list, click **Reset Password**.

Option 1:

If the window with security code field pops up, input the security code, and then you can restore the default password of the selected device.

Note: The security code is returned after you send the data and serial No. of the device to the manufacturer.

Option 2:

If the window with import file and export file buttons pops up, perform the following steps to restore the default password:

1. Click **Export** to save the device file on your PC.
2. Send the file to our technical engineers.
3. Click **Import** and select the file received from the technical engineer.
4. Click **OK** button to restore the default password of the device.



- ◆ *The default password (12345) for the Admin account is for first-time log-in purposes only. You must change this default password to better protect against security risks, such as the unauthorized access by others to the product that may prevent the product from functioning properly and/or lead to other undesirable consequences.*
- ◆ *For your privacy, we strongly recommend changing the password to something of your own choosing (using a minimum of 8 characters, including upper case letters, lower case letters, numbers, and special characters) in order to increase the security of your product.*
- ◆ *Proper configuration of all passwords and other security settings is the responsibility of the installer and/or end-user.*

Option 3:

If the window with import file and export file buttons, password and confirm password field pops up, follow the steps below to reset the password:

1. Click **Export** to save the device file on your PC.
2. Send the file to our technical engineers.
3. Click **Import** and select the file received from the technical engineer.
4. Input new password in text fields of **Password** and **Confirm Password**.
5. Click **OK** button to reset the password.



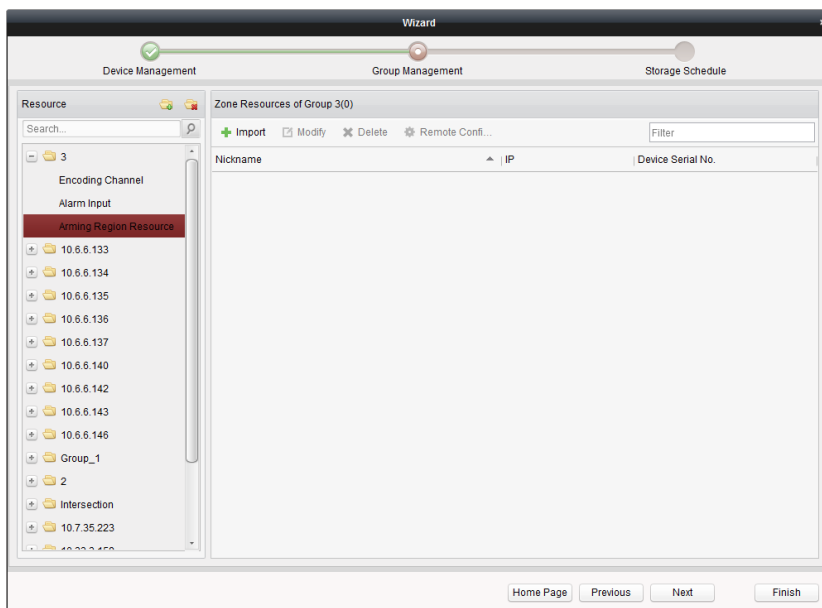
The password strength of the device can be checked by the software. For your privacy, we strongly recommend changing the password to something of your own choosing (using a minimum of 8 characters, including upper case letters, lower case letters, numbers, and special characters) in order to increase the security of your product. And we recommend you reset your password regularly, especially in the high security system, resetting the password monthly or weekly can better protect your product.

For details of other device adding methods, please refer to the *User Manual of iVMS-4200*.



Click **Next** button to continue. You can also click **Home Page** button to return to the home page of the wizard, or click **Finish** button to exit.

Step 3: Importing Devices into Groups

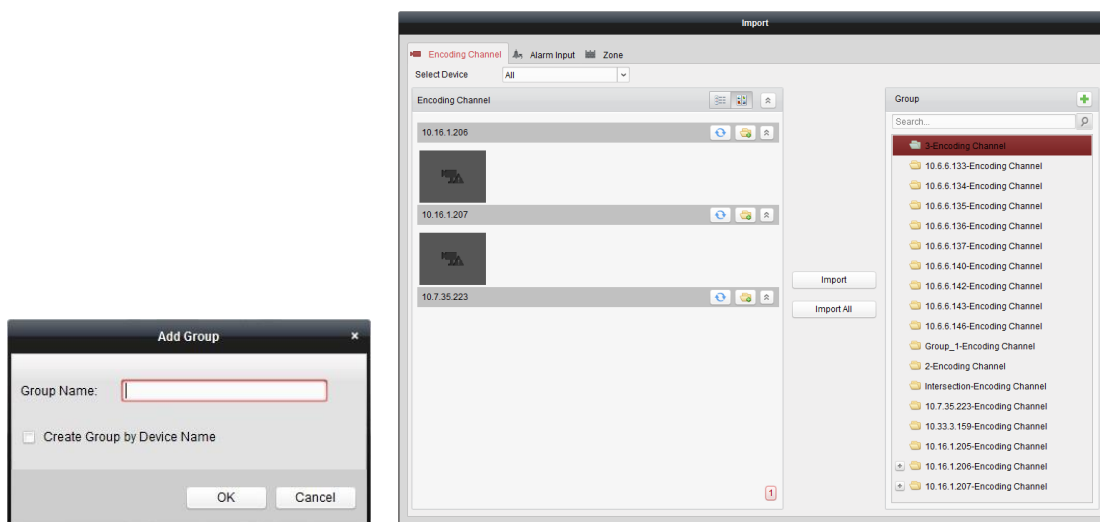
The added devices need to be organized into groups for a convenient management. You can get the live view, play back the video files, and do some other operations of the devices through the group.






Steps:



1. Click  to open the Add Group dialog box, input a group name as you want and click **OK** button.
2. Click **Import** on right panel, and then click the **Encoding Channel** tab to open the Import Encoding Channel interface.
3. Select the thumbnails/names of the cameras in the thumbnail/list view.
4. Select a group from the group list.
5. Click **Import** button to import the selected cameras to the group.
You can also click **Import All** button to import all the cameras to the selected group.
6. Click  to back to the group management interface.

Note: Up to 256 cameras can be added to one group.



The following buttons are available on the Import Encoding Channel interface:

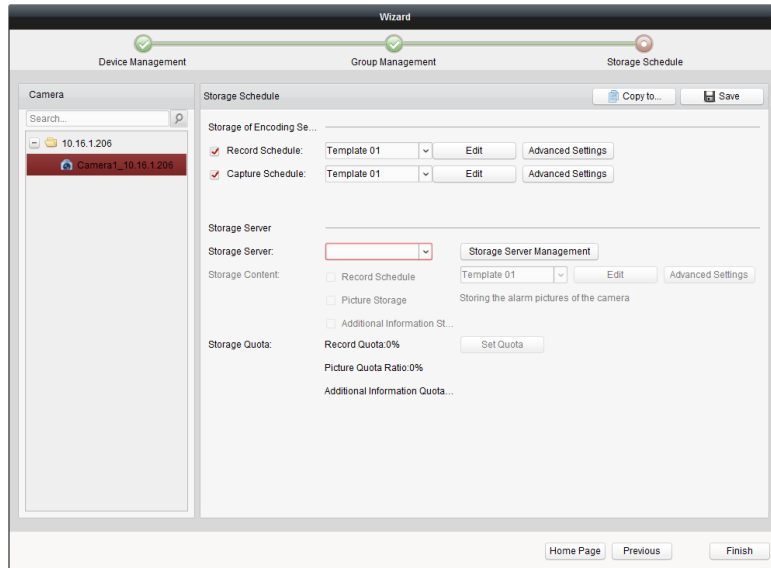
- | | | |
|---|-----------------------|--|
|  | List View | View the camera in list view. |
|  | Thumbnail View | View the camera in thumbnail view. |
|  | Refresh | Refresh the latest information of added cameras. |

-  **Import** Create a group named as *device name-Encoding Channel (Alarm Input)* and import the device to group.
-  **Collapse/Expand** Collapse/Expand the thumbnails of cameras.

Click **Next** button to continue.

Step 4: Configuring the Record Schedule

The video files can be recorded on the HDDs, Net HDDs, SD/SDHC cards on the local device, or the storage server connected.



Steps:

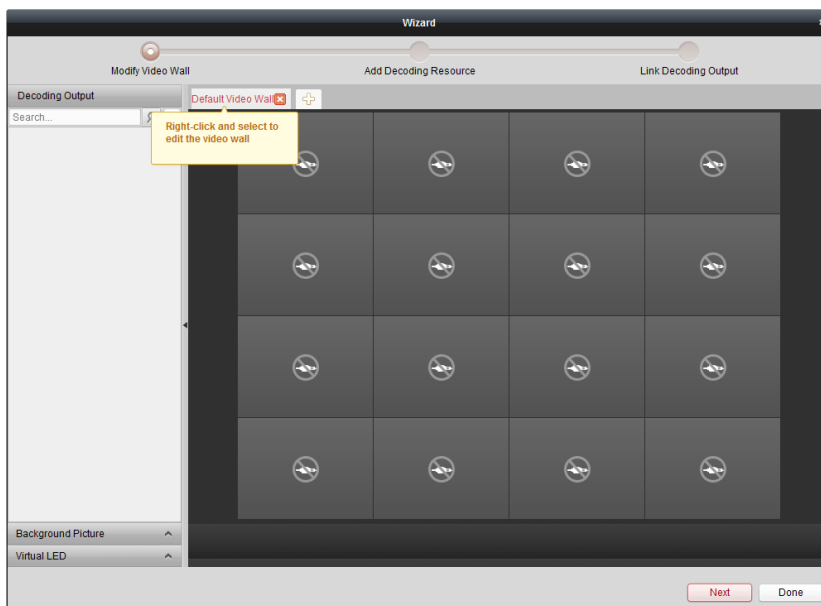
1. Select the camera from the Camera Group list.
2. Check the checkbox **Record Schedule** to enable device local recording.
3. Select the record schedule template from the drop-down list.
4. Click **Advanced Settings** to set the recording parameters.
5. Optionally, click **Copy to...** to copy the record schedule settings to other cameras.
6. Click **Save** button to save the settings.

Step 5: Wizard Finished

The wizard is complete. Click **Finish** button to close the wizard.

5.2.2 Wizard for Video Wall

The iVMS-4200 software provides video wall wizard to guide you to go through the basic operations of video wall settings, such as adding decoding devices, linking output with video wall, etc.



Perform the following steps to go through the wizard and configure the video wall.

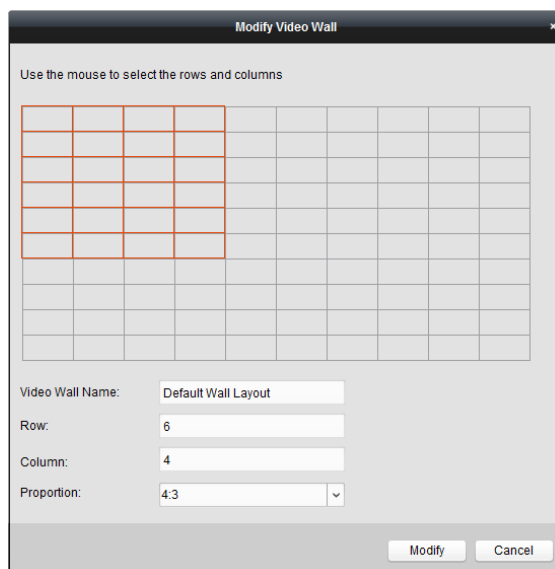
Step 1: Edit Video Wall

Click **Help** in the menu bar and select **Open Video Wall Wizard** to open it.

The software provides a default video wall view which is 3X3.

You can right-click the **Default Video Wall** tab and select **Modify Video Wall** to modify the view as desired.


In the pop-up dialog box, edit the name, row number, column number and proportion for the video wall. Click **Modify** button to save the settings and back to the video wall settings wizard.



In the video wall settings wizard, click **Next** button to continue.

Step 2: Add Decoding Resource, Link Decoding Resource with Video Wall

Steps:

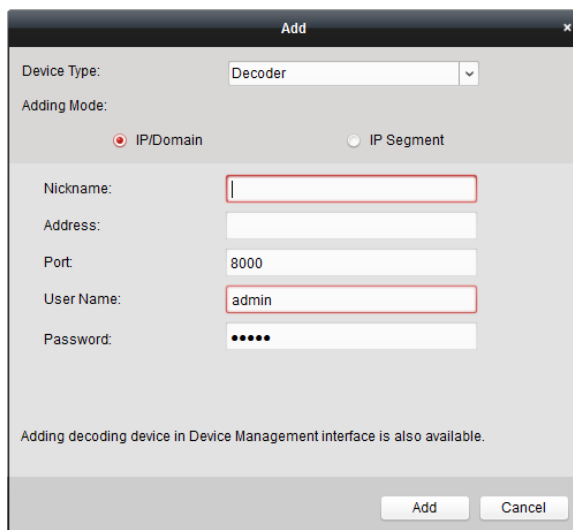
1. Click  in the Decoding Output panel and the adding decoding device dialog box pops up.
2. Select the device type, adding mode, and edit the corresponding information.
 - For decoder, 2 adding modes are selectable.

IP/Domain: Add the device by IP address or Domain name. You need to enter the nickname, IP address or domain name, port No., user name and password of the device.

IP Segment: Add the devices whose IP addresses are among the IP segment. You need to enter the start IP address, end IP address, port No., user name and password of the devices.

- For cascading server, you can add the device by IP address. Enter the nickname, IP address, port No., user name and password of the device.

3. Click **Add** button to add the device.



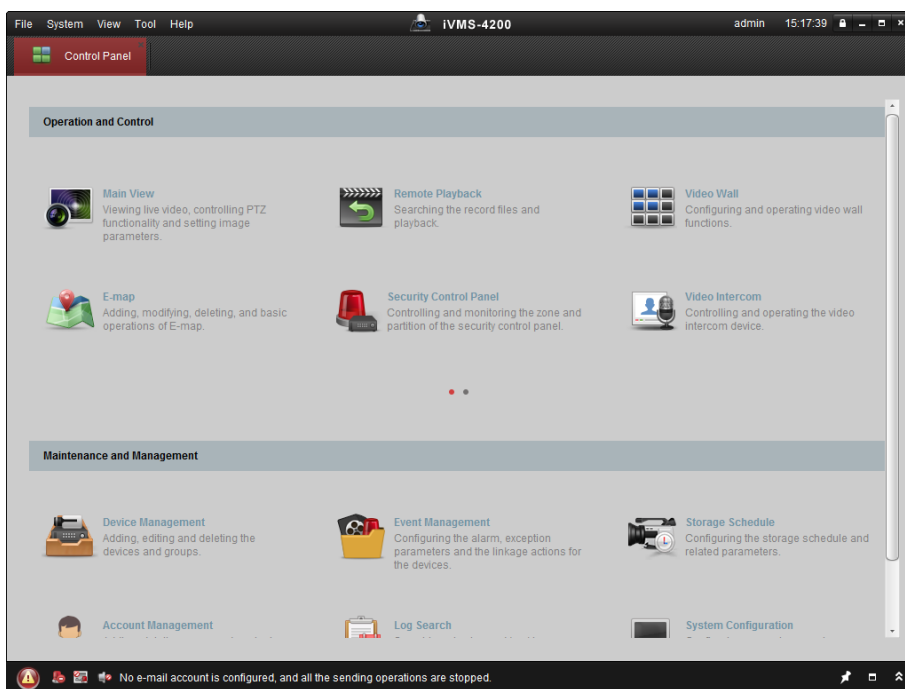
4. In the decoding output area, drag a decoding output or the device to the video wall view to link them.

Note: The decoding output can only be related to one monitor.

Click **Done** button to finish the wizard.

5.3 Control Panel

iVMS-4200 provides user-friendly GUI for the convenient and effective operation of the software. The main control panel of the software is shown below:



Menu Bar:

| | | |
|---------------------------------|---------------------------------------|---|
| File | Open Image File | Search and view the captured pictures stored on local PC. |
| | Open Video File | Search and view the video files recorded on local PC. |
| | Open Log File | View the backup log files. |
| | Exit | Exit the iVMS-4200 client software. |
| System | Lock | Lock screen operations. Login the client again to unlock. |
| | Switch User | Switch the login user. |
| | Import System Config File | Import client configuration file from your computer. |
| | Export System Config File | Export client configuration file to your computer. |
| View | 1024*768 | Display the window at size of 1024*768 pixels. |
| | 1280*1024 | Display the window at size of 1280*1024 pixels. |
| | 1440*900 | Display the window at size of 1440*900 pixels. |
| | 1680*1050 | Display the window at size of 1680*1050 pixels. |
| | Maximize | Display the window in maximum mode. |
| | Control Panel | Enter Control Panel interface. |
| | Main View | Open Main View page. |
| | Remote Playback | Open Remote Playback page. |
| | Video Wall | Open Video Wall page. |
| | E-map | Open E-map page. |
| | Security Control Panel | Open Security Control Panel page. |
| | Video Intercom | Open Video Intercom page. |
| Auxiliary Screen Preview | Open Auxiliary Screen Preview window. | |
| Tool | Device Management | Open the Device Management page. |

| | | |
|-------------|-------------------------------|---|
| | Event Management | Open the Event Management page. |
| | Storage Schedule | Open the Storage Schedule page. |
| | Account Management | Open the Account Management page. |
| | Log Search | Open the Log Search page. |
| | System Configuration | Open the System Configuration page. |
| | Broadcast | Select camera to start broadcasting. |
| | Device Arming Control | Set the arming status of devices. |
| | Alarm Output Control | Turn on/off the alarm output. |
| | Batch Wiper Control | Batch starting or stopping the wipers of the devices. |
| | Batch Time Sync | Batch time synchronization of the devices. |
| | Player | Open the player to play the video files. |
| | Message Queue | Display the information of Email message to be sent. |
| Help | Open Wizard | Open the guide for the client configuration. |
| | Open Video Wall Wizard | Open the guide for the video wall configuration. |
| | User Manual (F1) | Click to open the User Manual; you can also open the User Manual by pressing F1 on your keyboard. |
| | About | View the basic information of the client software. |
| | Language | Select the language for the client software and reboot the software to activate the settings. |

The iVMS-4200 client software is composed of the following function modules:



The Main View module provides live view of network cameras and video encoders, and supports some basic operations, such as picture capturing, recording, PTZ control, etc.



The Remote Playback module provides the search, playback, export of video files.



The Video Wall module provides the management of decoding device and video wall and the function of displaying the decoded video on video wall.



The E-map module provides the displaying and management of E-maps, alarm inputs, hot regions and hot spots.



The Security Control Panel module provides operations such as arming, disarming, bypass, group bypass, and so on for both the partitions and zones.



The Video Intercom module provides video intercom with iVMS-4200 via indoor station, group management, card management and notice management.



The Statistics module provides functions of heat map, people counting statistics, counting statistics, road traffic, face retrieval, vehicle plate, behavior, and face capture statistics.



The Device Management module provides the adding, modifying and deleting of different devices and the devices can be imported into groups for management.



The Event Management module provides the settings of arming schedule, alarm linkage actions and other parameters for different events.



The Storage Schedule module provides the schedule settings for recording and pictures.



The Account Management module provides the adding, modifying and deleting of user accounts and different permissions can be assigned for different users.



The Log Search module provides the query of system log files and the log files can be filtered by different types.



The System Configuration module provides the configuration of general parameters, file saving paths, alarm sounds and other system settings.

The function modules are easily accessed by clicking the navigation buttons on the control panel or by selecting the function module from the **View** or **Tool** menu.

You can check the information, including current user, network usage, CPU usage, memory usage and time, in the upper-right corner of the main page.

5.4 Live View


Purpose:

You can view the live video of the added cameras on the Main View page. And some basic operations are supported, including picture capturing, manual recording, PTZ control, etc.

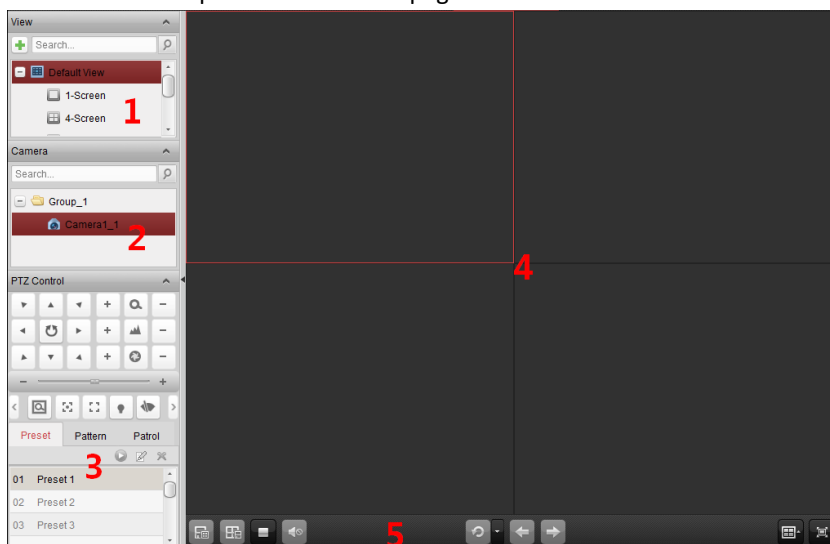
Before you start:

A camera group is required to be defined for live view.



Click the  icon on the control panel,

or click **View->Main View** to open the Main View page.














Main View Page

- 1 View List
- 2 Camera List
- 3 PTZ Control Panel
- 4 Display Window of Live View
- 5 Live View Toolbar

Live View Toolbar:




On the Main View page, the following toolbar buttons are available:

| | | |
|---|----------------------------|---|
|  | Save View | Save the new settings for the current view. |
|  | Save View as | Save the current view as another new view. |
|  | Stop Live View | Stop the live view of all cameras. |
|  | Mute/Audio On | Turn off/on the audio in live view |
|  | Resume/Pause | Click to resume/pause the auto-switch in live view. |
|  | Auto-switch | |
|  | Show /Hide the Menu | Show/Hide the configuration menu of auto-switch. Click again to hide. |
|  | Previous | Go for live view of the previous page. |
|  | Next | Go for live view of the next page. |
|  | Window Division | Set the window division. |
|  | Full Screen | Display the live view in full-screen mode. Press ESC to exit. |

Starting Live View for One Camera

Steps:

1. Open the Main View page.
2. Optionally, click the  icon in live view toolbar to select the window division mode for live view.
3. Click-and-drag the camera to the display window,
or double-click the camera name after selecting the display window to start the live view.

Note: You can click-and-drag the video of the camera in live view to another display window if needed.

Starting Live View for Camera Group

Steps:

1. Open the Main View page.
2. Click-and-drag the group to the display window,
or double-click the group name to start the live view.


Note: The display window number is self-adaptive to the camera number of the group.


Starting Live View in Default View Mode

Purpose:

The video of the added cameras can be displayed in different view modes. 4 frequently-used default view modes are selectable: 1-Screen, 4-Screen, 9-Screen and 16-Screen.

Steps:

1. Open the Main View page.
2. Click the icon  to expand the default view list.
3. Click to select the default view mode, and the video of the added cameras will be displayed in a sequence in the selected view.






Note: Click , and you can save the default view as a custom view.

Starting Live View in Custom View Mode



Purpose:

The view mode can also be customized for the video live view.

Steps:

1. Open the Main View page.
2. Click the icon  to expand the custom view list.
3. Click  to create a new view.
4. Input the view name and click **Add**. The new view is of 4-Screen mode by default.
Optionally, click the  icon in live view toolbar and select the screen layout mode for the new view.
5. Click-and-drag the camera/group to the display window,
or double-click the camera/group name in custom view mode to start the live view.
6. Click the icon  to save the new view. You can also click  to save the view as another custom view.

Stopping the Live View**Steps:**

1. Select the display window.
2. Click the icon  that appears in the upper-right corner when the mouse pointer is over the display window,
or click **Stop Live View** on the right-click menu to stop the live view of the display window.
You can also click the button  in live view toolbar to stop all the live view.


5.5 Recording

Purpose:

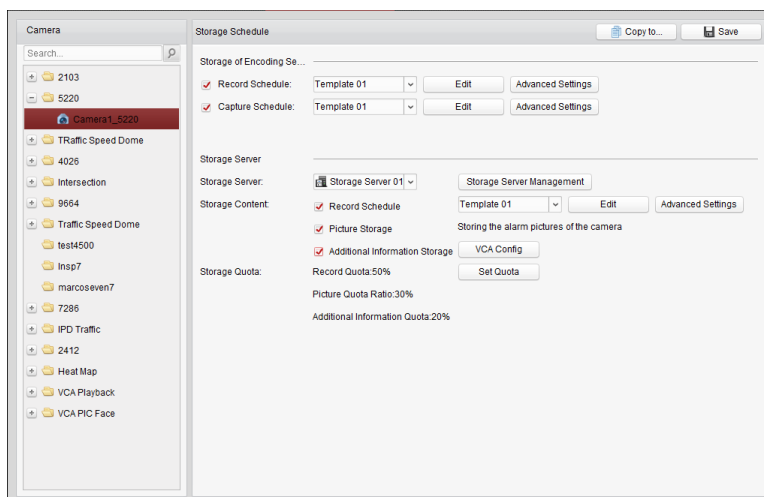
Some local devices, including the DVRs, NVRs, and Network Cameras, provide storage devices such as the HDDs, Net HDDs and SD/SDHC cards for video files.

Before you start:

The newly installed storage devices need to be formatted. In the Device Management page, enter the remote configuration interface of the device, click **Storage->General**, select the HDD or SD/SDHC card, and click **Format** to initialize the selected storage device.

Click the  icon on the control panel,

or click **Tool->Record Schedule** to open the Record Schedule page.



Steps:

1. Open the Record Schedule page.
2. Select the camera from the Camera Group list.
3. Check the checkbox **Record Schedule** to enable device local recording.
4. Select the record schedule template from the drop-down list.

All-day Template: For all-day continuous recording.

Weekday Template: For working-hours continuous recording from 8:00 AM to 8:00 PM.

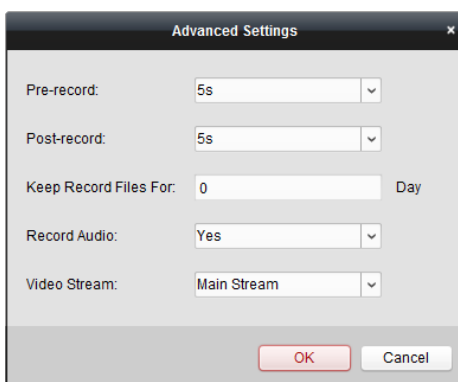
Event Template: For the event triggered recording.

Template 01 to 08: Fixed templates for specific schedules. You can edit the templates if needed.

Custom: Can be customized as desired.

If you need to edit or customize the template, see *Configuring Record Schedule Template*.

5. Click **Advanced Settings** to set the recording parameters.
6. Optionally, click **Copy to...** to copy the record schedule settings to other cameras.
7. Click **Save** button to save the settings.



| Parameters | Descriptions |
|------------------------------|---|
| Pre-record | Normally used for the event triggered record, when you want to record before the event happens |
| Post-record | After the event finished, the video can also be recorded for a certain time. |
| Keep Record Files for | The time for keeping the video files in the storage device, once exceeded, the files will be deleted. The files will be saved permanently if the value is set as 0. |
| Redundant Record | Save the video files not only in the R/W HDD but also in the redundant HDD. |

| | |
|---------------------|---|
| Record Audio | Record the video files with audio or not. |
| Video Stream | Select the stream type for the recording. |

Configuring Record Schedule Template



Perform the following steps to configure the record schedule template:



If **Template 01 to 08** is selected from the drop-down list, start from step 1;

If **Custom** is selected from the drop-down list, start from step 2.

1. Click **Edit** to enter the Templates Management interface. Select the template to be set and you can edit the template name.
2. Set the time schedule for the selected template.


 **Schedule Recording** refer to normal schedule record. The schedule time bar is marked with .

 **Event Recording** refers to the schedule record triggered by the event. The schedule time bar is marked with .




 **Command** refers to the schedule record triggered by command. The schedule time bar is marked with .

Note: Record triggered by command is only available for the ATM transactions when the ATM DVR is added to iVMS-4200.

When the cursor turns to , you can set the time period.

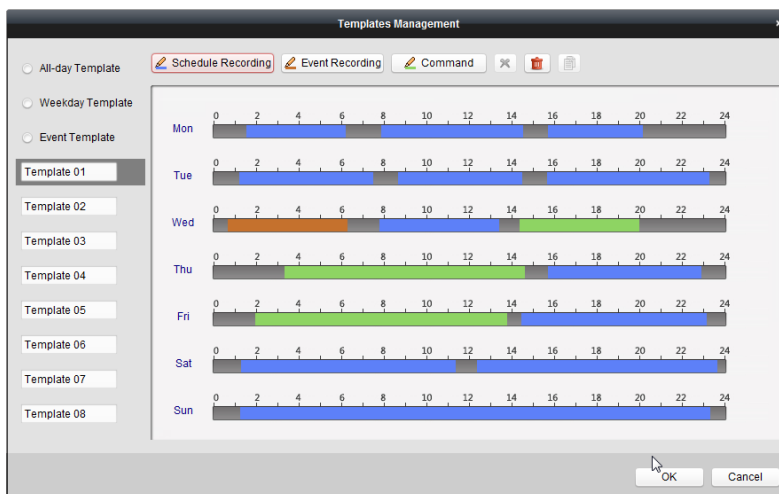
When the cursor turns to , you can move the selected time bar you just edited. You can also edit the displayed time point to set the accurate time period.

When the cursor turns to , you can lengthen or shorten the selected time bar.

3. Optionally, you can select the schedule time bar, and then click the icon  to delete the selected time bar, or click the icon  to delete all the time bars, or click the icon  to copy the time bar settings to the other dates.
4. Click **OK** button to save the settings.

You can click **Save as Schedule Template** on the Custom Schedule interface, and then the custom template can be saved as template 01 to 08.


Note: Up to 8 time periods can be set for each day in the record schedule.



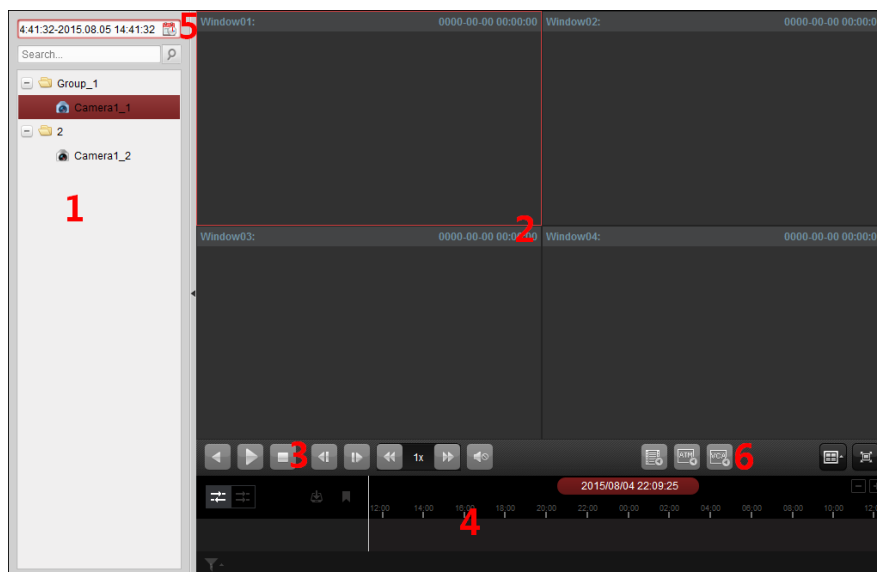
5.6 Playback

Purpose:

The video files stored on the local device or the storage server can be searched by camera or triggering event, and then can be played back remotely.

Click the  icon on the control panel,

or click **View->Remote Playback** to open the Remote Playback page.



Remote Playback Page

- 1 Camera List
- 2 Display Window of Playback
- 3 Playback Control Buttons
- 4 Timeline
- 5 Calendars
- 6 Search Condition


5.6.1 Normal Playback

Purpose:

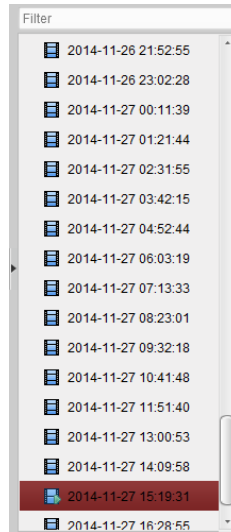
The video files can be searched by camera or group name for the Normal Playback.

Searching Video Files for Normal Playback

Steps:

1. Open the Remote Playback page.
2. Click-and-drag the camera or group to the display window, or double-click the camera or group to start the playback.
3. The found video files of the selected group or camera will be displayed on the right of the interface. You can filter the results through the **Filter** text field.
4. (Optional) Click the calendars icon  to activate the calendars dialog box. Select the date and set the accurate time.

Click **OK** button and the video files of the 7 days near to the configured date will be searched and displayed.




Notes:


- Up to 16 cameras can be searched simultaneously.
- In the calendar, the date which has scheduled records will be marked with ▲ and the date with event records will be marked with ▲.

Playing Back Video Files

After searching the video files for the normal playback, you can play back the video files in the following two ways:



- **Playback by File List**

Select the video file from the search result list, and then click the icon  on the video file, or double-click the video file to play the video on the display window of playback.

You can also select a display window and click the icon  in the toolbar to play back the corresponding video file.

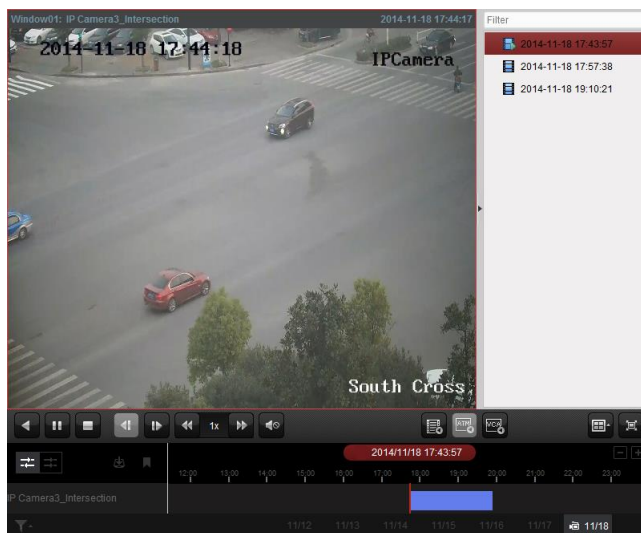
- **Playback by Timeline**

The timeline indicates the time duration for the video file, and the video files of different types are color coded. Click on the timeline to play back the video of the specific time.

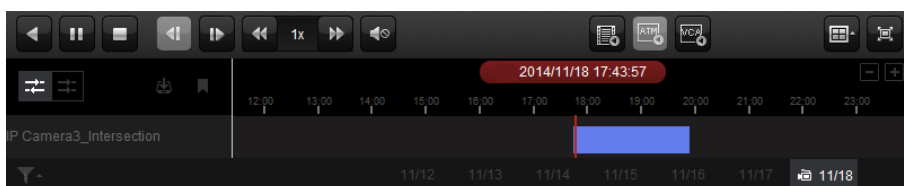
You can click  or  to scale up or scale down the timeline bar.

You can drag the timeline bar to go to the previous or the next time period.
















You can use the mouse wheel to zoom in or zoom out on the timeline.



Normal Playback Toolbar:



On the Normal Playback page, the following toolbar buttons are available:

| | | |
|---|------------------------------------|---|
|  | Reverse Playback | Play back the video file reversely. |
|  | Pause/Start Playback | Pause/Start the playback of the video files. |
|  | Stop Playback | Stop the playback of all cameras. |
|  | Single Frame (Reverse) | Play back the video files frame by frame reversely. |
|  | Single Frame | Play back the video files frame by frame. |
|  | Slow Forward / Fast Forward | Decrease / Increase the play speed of the playback. |
|  | Volume | Click to turn on/off the audio and adjust the audio volume. |
|  | Event Playback | Search the recordings triggered by event, such as motion detection, video loss or video tampering. |
|  | ATM Playback | Search the recordings of ATM devices. |
|  | VCA Playback | Set the VCA rule to the searched video files that VCA event occurs, including VCA Search, Intrusion and Line Crossing. |
|  | Window Division | Set the window division. |
|  | Full Screen | Display the video playback in full-screen mode. Press ESC to exit. |
|  | Async/Sync Playback | Click to play back the video files synchronously/asynchronously. |
|  | Download | Download the video files of the camera and the video files are stored in the PC. You can select to download by file or by date. |
|  | Tag | Add default tag for the video file to mark the important |

video point. You can edit the tag or go to the tag position via the right-click menu.

Display the record types as desired. E.g., you can select to display only the event recording.

The day that has video files will be marked with .





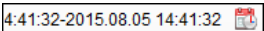



5.6.2 Event Playback

Purpose:

The recordings triggered by event, such as motion detection, VCA detection or behavior analysis, can be searched for Event Playback and this function requires the support of the connected device.

Searching Video Files for Event Playback



Steps:

1. Open the Remote Playback page.
2. Select the camera and start the normal playback. Refer to *Chapter 5.6.1 Normal Playback*.
3. Click  and the motion detection triggered recording will be search by default.
4. Select the event type from the drop-down list and the found video files will be displayed. You can filter the results through the **Filter** text field. Or you can click  to go back to the normal playback.
5. (Optional) Click the calendars icon  to activate the calendars dialog box. Select the date and set the accurate time. Click **OK** button and the video files of the 7 days near to the configured date will be searched and displayed.
Note: In the calendar, the date which has scheduled records will be marked with  and the date with event records will be marked with .
6. Select the video file from the search result list, and then click the icon  on the video file, or double-click the video file to play the video on the corresponding display window of playback.

Playing Back Video Files



After searching the recordings triggered by the event, you can play back the video files in the following two ways:

- **Playback by File List**

Select the video file from the search result list, and then click the icon  in the toolbar, or click the icon  on the video file, or double-click the video file to play the video on the corresponding display window of playback.

- **Playback by Timeline**

The timeline indicates the time duration for the video file. Click on the timeline to play back the video of the specific time.

You can click  or  to zoom in or zoom out the timeline bar.

You can drag the timeline bar to go to the previous or the next time period.

You can use the mouse wheel to zoom in or zoom out on the timeline.

Please refer to *Chapter 5.6.1 Normal Playback* for the description of the playback control toolbar. Some icons may not available for event playback.



5.6.3 Synchronous Playback

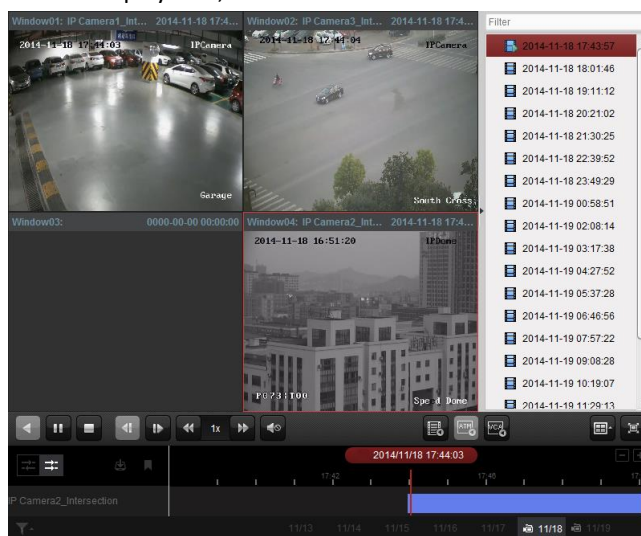
Purpose:

In synchronous playback, the video files can be played back in synchronization.

Note: Video files from up to 16 cameras can be played back simultaneously.

Steps:


1. Search the video files for the normal playback. At least two cameras are during playback.
2. Click  in the toolbar to enable the synchronous playback. The camera under playback will start synchronous playback.
3. To disable the synchronous playback, click the icon .



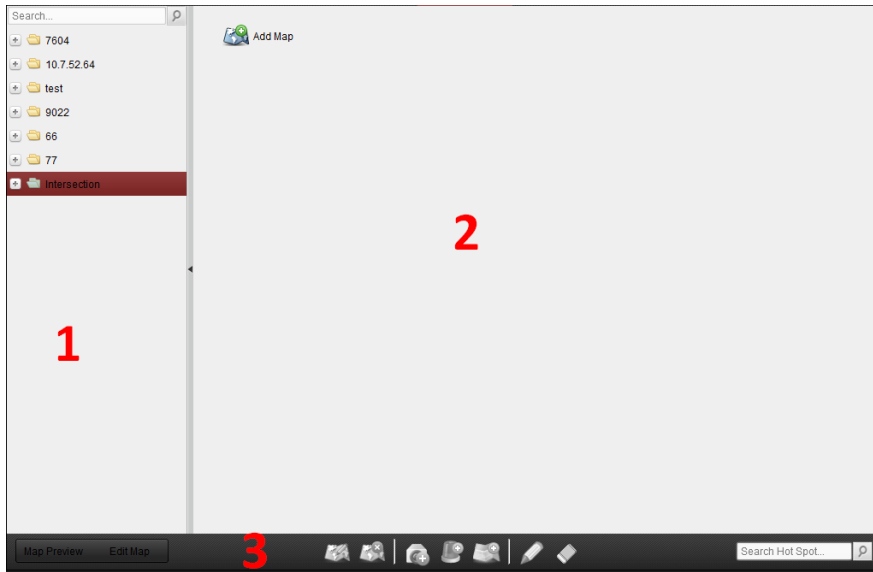
5.7 E-map

Purpose:

The E-map function gives a visual overview of the locations and distributions of the installed cameras and alarm input devices. You can get the live view of the cameras on the map, and you will get a notification message from the map when alarm is triggered.

Click the  icon on the control panel,

or click **View->E-map** to open the E-map page.



E-map Page



- 1 Group List
- 2 Map Display Area
- 3 E-map Toolbar

5.7.1 Adding an E-map

Purpose:

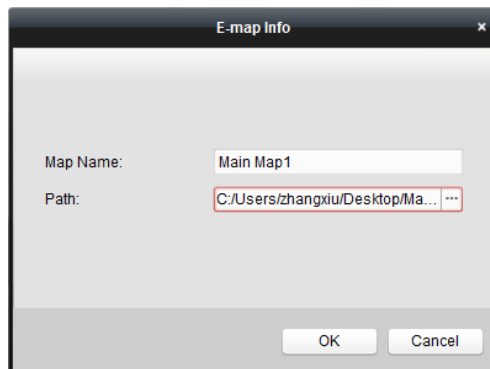
An E-map needs to be added as the parent map for the hot spots and hot regions.



Steps:

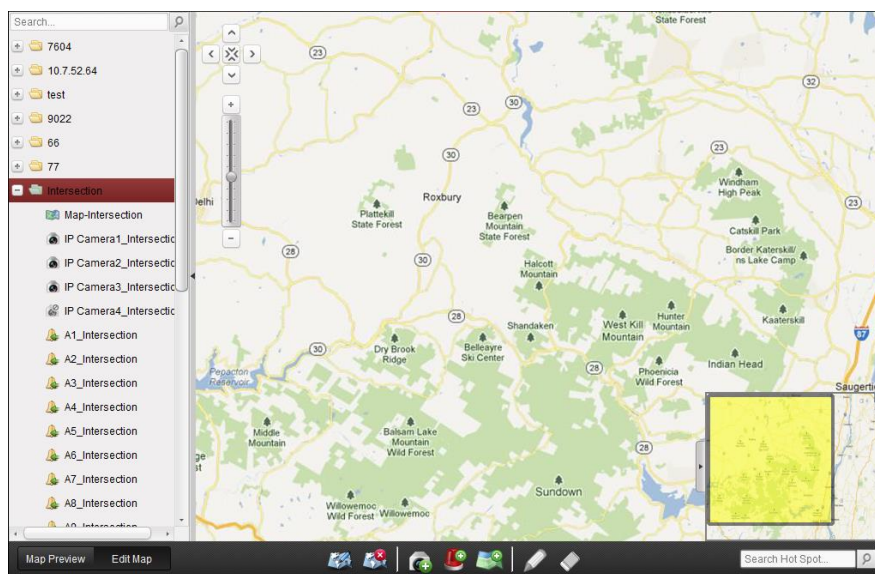
1. Open the E-map page.
2. Select a group for which you want to add a map.
3. Click the icon  in the Map Display Area to open the map adding dialog box.
4. Input a descriptive name of the added map as desired.
5. Click the icon  and select a map file from the local path.
6. Click **OK** button to save the settings.

Notes:

- The picture format of the map can only be *.png, *.jpg or *.bmp.
- Only one map can be added to a group.



The map added is displayed in the Map Display Area. Use the mouse wheel or click  or , to zoom in or zoom out on the map. You can click-and-drag the yellow window in the lower-right corner or use the direction buttons and zoom bar to adjust the map area for view.



Click the button **Edit Map** or **Map Preview** in the E-map toolbar to enter the map editing mode or map preview mode.








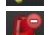

E-map Toolbar in Map Editing Mode:



E-map Toolbar in Map Preview Mode:



On the E-map page, the following toolbar buttons are available:

- | | | |
|---|---------------------------|---|
|  | Modify Map | Modify the map information, including the map name and file path. |
|  | Delete Map | Delete the current map. |
|  | Add Camera | Add a camera as the hot spot on the map. |
|  | Add Alarm Input | Add an alarm input sensor as the hot spot on the map. |
|  | Add Hot Region | Add a map as the hot region on the current map. |
|  | Modify | Modify the information of the selected hot spot or hot region. |
|  | Delete | Delete the selected hot spot or hot region. |
|  | Clear Alarm Info | Clear the alarm information displayed on the map. |
|  | Back to Parent Map | Go back to the parent map. |

5.7.2 Hot Spot Function


Purpose:

The cameras and alarm inputs can be added on the map and are called the hot spots. The hot spots show the locations of the cameras and alarm inputs, and you can also get the live view and alarm information of the surveillance scenarios through the hot spots.

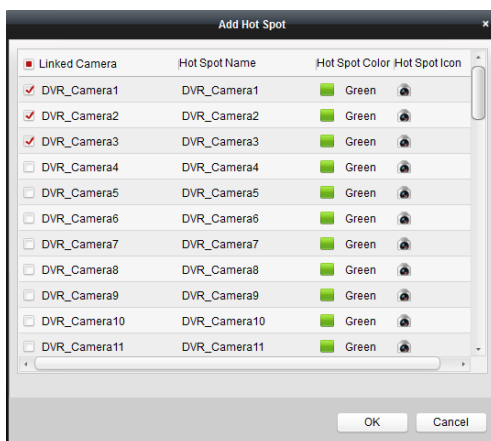
Adding Hot Spots

Adding Cameras as Hot Spots

Steps:

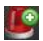
1. Click the **Edit Map** button in the E-map toolbar to enter the map editing mode.
2. Click the icon  in the toolbar to open the Add Hot Spot dialog box.
3. Check the checkboxes to select the cameras to be added.
4. Optionally, you can edit hot spot name, select the name color and select the hot spot icon by double-clicking the corresponding field.
5. Click **OK** button to save the settings.

You can also click-and-drag the camera icons from the group list to the map directly to add the hot spots.

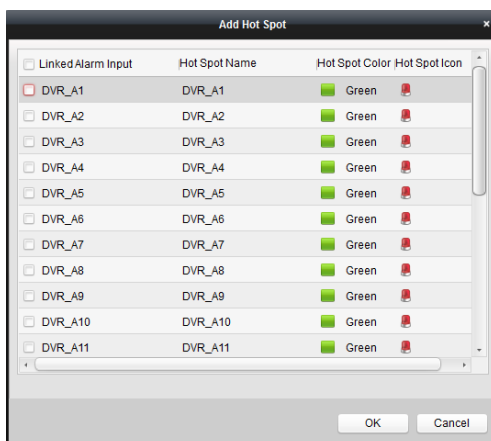


Adding Alarm Inputs as Hot Spots

Steps:

1. Click the **Edit Map** button in the E-map toolbar to enter the map editing mode.
2. Click the icon  in the toolbar to open the Add Hot Spot dialog box.
3. Check the checkboxes to select the alarm inputs to be added.
4. Optionally, you can edit hot spot name, select the name color and select the hot spot icon by double-clicking the corresponding field.
5. Click **OK** button to save the settings.


You can also click-and-drag the alarm input icons from the alarm input list to the map directly to add the hot spot.




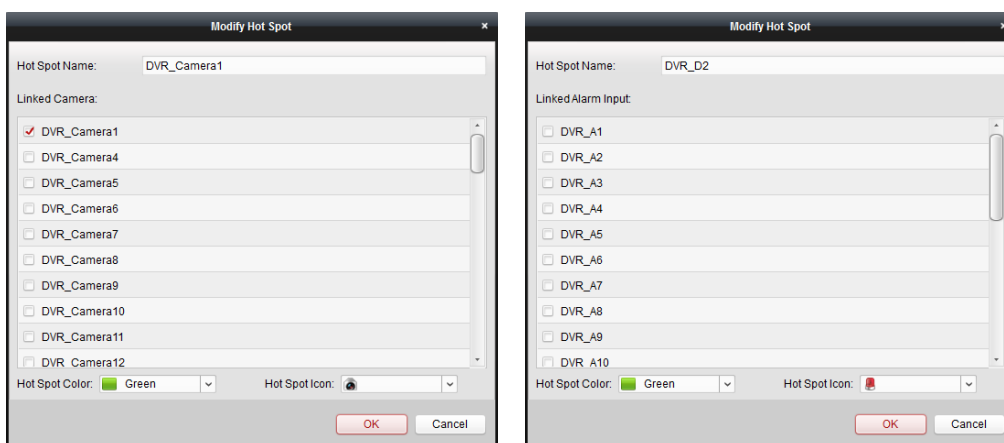
Modifying Hot Spots

You can modify the information of the added hot spots on the map, including the name, the color, the icon, etc.

Steps:


1. Click the **Edit Map** button in the E-map toolbar to enter the map editing mode.
2. Select the hot spot icon on the map and then click  in the toolbar, or double-click the hot spot icon on the map to open the Modify Hot Spot dialog box.
3. You can edit the hot spot name in the text field and select the color, the icon and the linked camera or alarm input.
4. Click **OK** button to save the new settings.

To delete the hot spot, select the hot spot icon and click  in the toolbar.

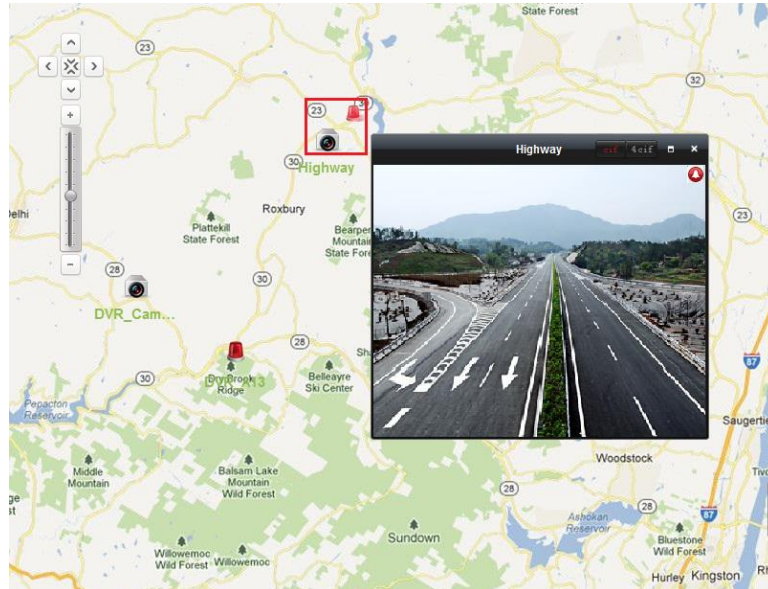


Previewing Hot Spots

Steps:

1. Click the **Map Preview** button in the E-map toolbar to enter the map preview mode.
2. Double-click the camera hot spots or right-click it and select **Live View**, and you can get the live view of the cameras.
3. If there is any alarm triggered, an icon  will appear and twinkle near the hot spot. Click the alarm icon, and then you can check the alarm information, including alarm type and triggering time.

Note: To display the alarm information on the map, the Alarm on E-map functionality needs to be set as the alarm linkage action.



5.7.3 Hot Region Function

Purpose:

The hot region function links a map to another map. When you add a map to another map as a hot region, an icon of the link to the added map is shown on the main map. The added map is called child map while the map to which you add the hot region is the parent map.


Note: A map can only be added as the hot region for one time.

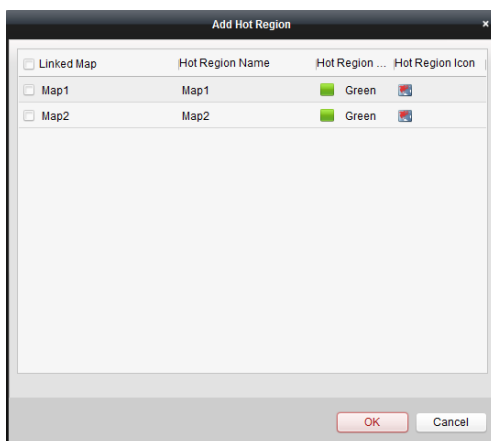
Adding Hot Regions

Before you start:

Add a map to another group.

Steps:

1. Click the **Edit Map** button in the E-map toolbar to enter the map editing mode.
2. Select an added map as the parent map.
3. Click the icon  in the toolbar to open the Add Hot Region dialog box.
4. Check the checkbox to select the child map to be linked.
5. Optionally, you can edit the hot region name, and select the hot region color and icon by double-clicking the corresponding field.
6. Click **OK** button to save the settings. The child map icons are added on the parent map as the hot regions. You can click-and-drag the child map icons to move the hot regions to the desired locations.



Modifying Hot Regions

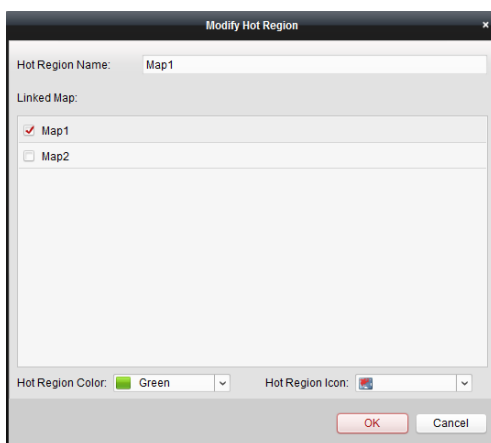
Purpose:

You can modify the information of the hot regions on the parent map, including the name, the color, the icon, etc.

Steps:

1. Click the **Edit Map** button in the E-map toolbar to enter the map editing mode.
2. Select the hot region icon on the parent map and then click in the toolbar, or double-click the hot region icon to open the Modify Hot Region dialog box.
3. You can edit the hot region name in the text field and select the color, the icon and the linked child map.
4. Click **OK** button to save the new settings.

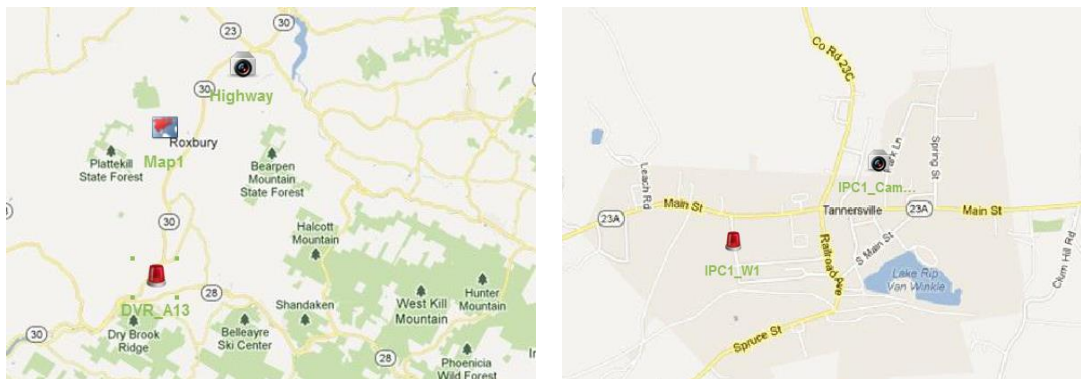
To delete the hot region, select the hot region icon and click in the toolbar.



Previewing Hot Regions

Steps:

1. Click the **Map Preview** button in the E-map toolbar to enter the map preview mode.
2. Click the hot region icon to go to the linked child map.
3. The hot spots can also be added on the hot regions.
4. You can click the icon in the toolbar to go back to the parent map.
You can also click the icon in the toolbar to clear the alarm information.



5.8 Web Browsing

Purpose:

iVMS-4200 client software can also be accessed through web browser. It provides the functionalities of live view, playback, device management, account management, system configuration, etc.

Before you start:

You should enable the web service for the software before you can access the software via web browser.

Note: For setting the web service, please go to the System Configuration module. The new settings will take effect after restarting the software. For detailed configuration, please refer to the *User Manual of iVMS-4200*.

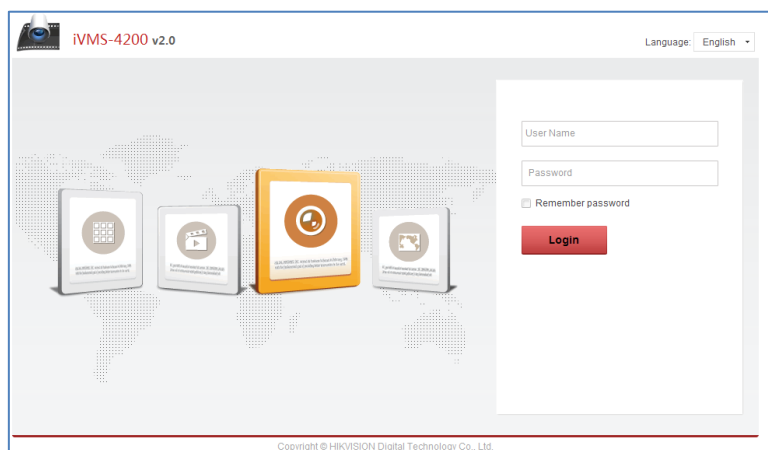
Steps:

1. Input the IP address of the PC running the iVMS-4200 in the address bar of the web browser, and press the **Enter** key. The login window shows.

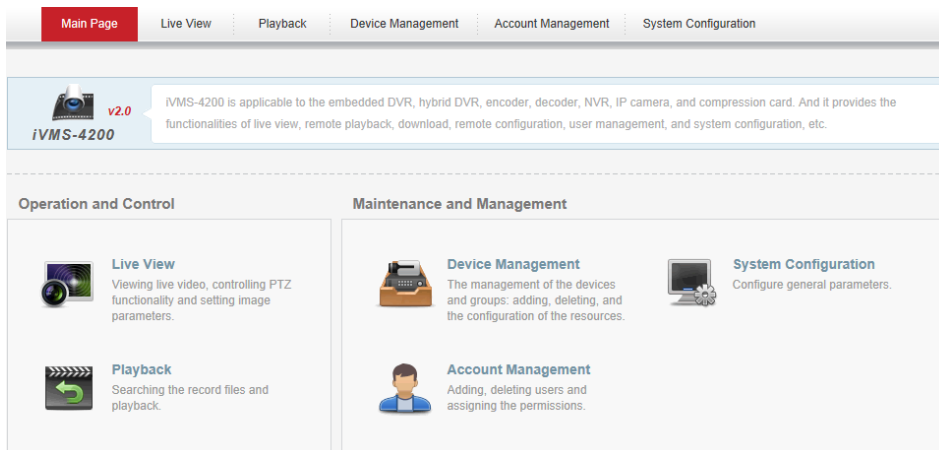
Note: If you have changed the web server port No., you should input the address of the software in the format of *http://IP address of PC:web server port No.* (e.g., *http:10.16.1.55:85*).

2. Input the user name and password of iVMS-4200.
3. Optionally, check the checkbox **Remember password** to save the password.
4. Click **Login** button.


Note: You can set the language as desired in the upper-right corner of the login interface.



The home page of the web browser after you login is shown as below.



6. Exit System

Click **File** on the top menu and select **Exit**, or click  on the upper-right corner of the main interface, and then a confirmation dialog box pops up. Click **OK** button to exit iVMS-4200.

0204001050824



First Choice for Security Professionals