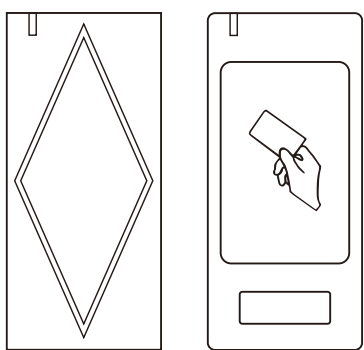


# Bluetooth Wiegand Reader



## User Manual

### Introduction

The reader is a metal case anti-vandal Wiegand output reader that can be mounted both indoor and outdoor. The default output format is Wiegand 34bits, while Wiegand 26bits is optional. The unique feature is it can be operated by website and mobile.... The operation is very smart and convenient.

### Two versions optional:

- IC version: Read 13.56MHz Mifare card
- ID version: Read 125 KHz EM card (Please use the appropriate card according to your device version)

### Features:

- Vandal resistance enclosure
- Waterproof, conforms to IP66
- Two ways to open the door: Card, Mobile phone
- Support opening the door through Bluetooth(version: 4.0 above), APP supports IOS7.0 above, Android 4.3 above
- Support Super Admin / Admin sending Remote E-key to others
- Wiegand26bits / 34bits output
- Wiegand output format: card number

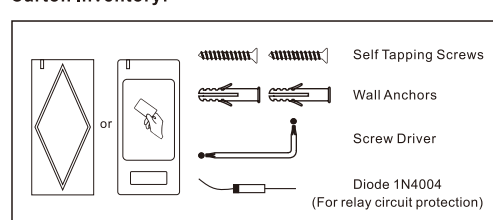
### Specifications:

Version	IC	ID
Bluetooth Range	Bluetooth Version:4.0 Above	<30m (relate to environment)
Mobile	IOS7.0 above, Android 4.3 above	
Operation Voltage	12V DC	
Standby Current	≤50mA	
Frequency	13.56MHz	125KHz
Card Type	Mifare card	EM card
Card Reading Distance	2~6cm	
Programmable Wiegand	Wiegand 26 bits/34 bits output (Default is 34bits) 26bits can be set by APP	

- 01 -

Operating Temperature	-20°C ~ 60°C (-4°F ~ 140°F)
Operating Humidity	0% to 98% RH
Index of Protection	IP66
Physical Dimension	Zinc-Alloy Enclosure L103 X W48 X H19 (mm)
Net Weight	260g
Shipment Weight	300g

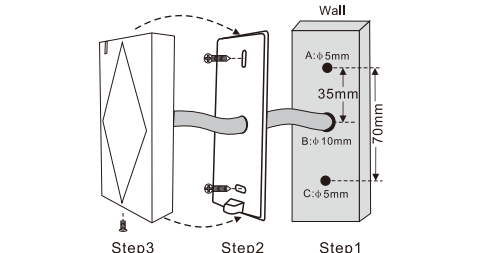
### Carton Inventory:



### Installation

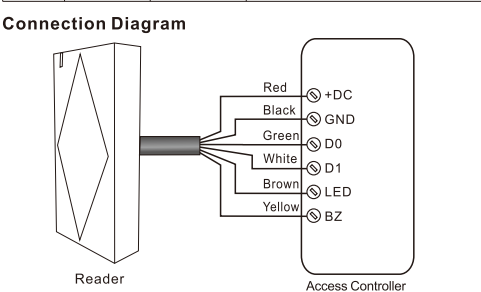
- Drill 2 holes(A,C) on the wall for the screws and one hole for the cable, thread the cable through the cable hole(B)
- Knock the rubber bungs to the screw holes(A,C), fix the back cover firmly on the wall with 4 flat head screws
- Attach the unit to the back cover.

- 02 -



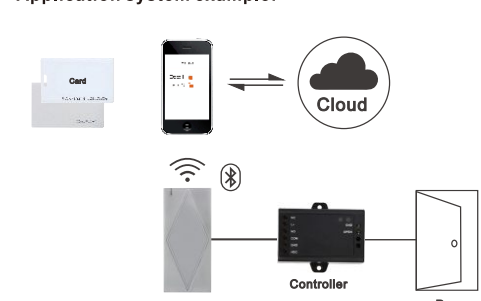
### Wiring

No.	Color	Function	Notes
1	Red	+12V	Regulated Power Input
2	Black	GND	Negative Pole
3	Green	D0	Data 0
4	White	D1	Data 1
5	Brown	LED	Green LED light Control
6	Yellow	BELL	Buzzer Control



- 03 -

### Application system example:



- 04 -

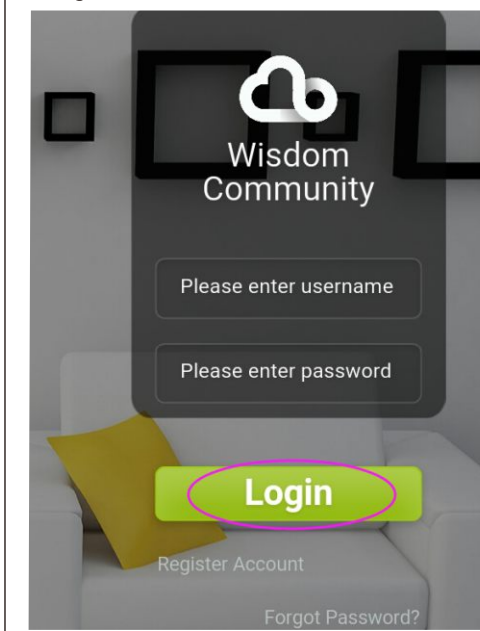
### Website Background Operation

This step is to configure all the settings, including Area Manage, User Manage, Device Manage, and Access Manage, only after configuring on this website background, the users can use DoorMaster APP on their mobile phones to control the device.  
Please enter <http://www.zhyal.com:8069> to start following steps:

### 1.Register

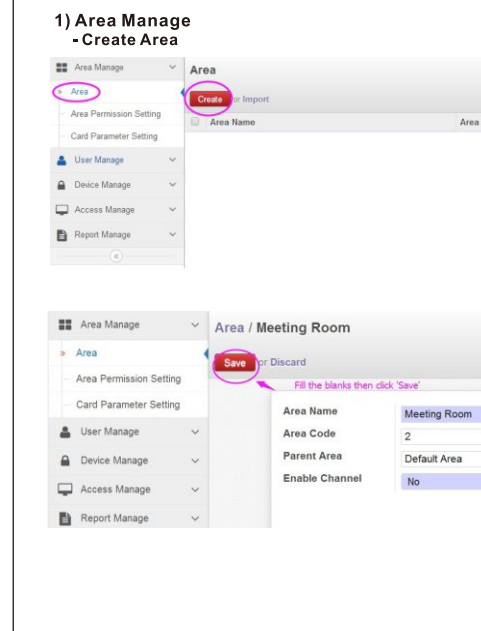
- 05 -

### 2.Login

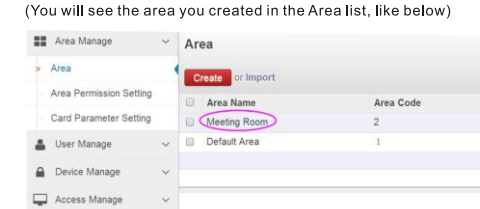


- 06 -

### 3. Management



- 07 -

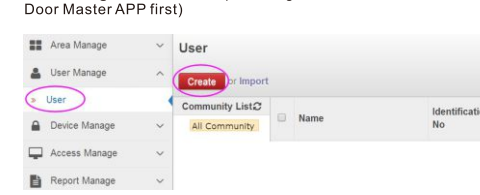


- Area Permission Setting  
This step can be done after the users added (please add the users first according to 'User Manage').

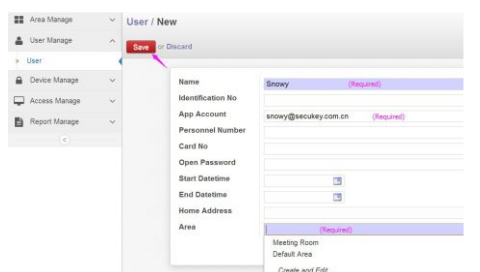
- Card Parameter Setting  
It's not valid for this device.

### 2) User Manage

- Create User For Adding Common User (Need register the APP account into Door Master APP first)

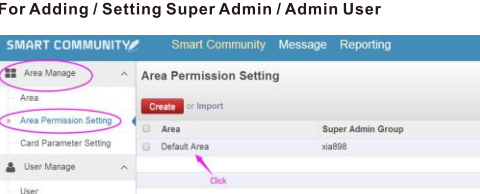


- 08 -

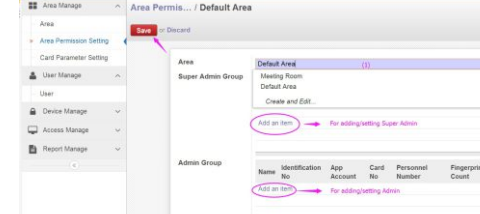
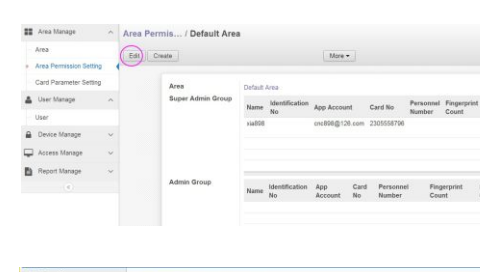


**Important tips:**  
1) Please MUST fill in the required blanks;  
2) APP Account: It must be a valid APP account, has been registered into DoorMaster APP (Refer to page 15 for registering an account);  
3) Card No.: You can fill in the card number which you have already added into your controller, or, you can use the automatic card number and then add this number into your controller;  
4) Start / End Date time: It's a good option for setting the users with limited access time.

### - Set User Area Permission For Adding / Setting Super Admin / Admin User



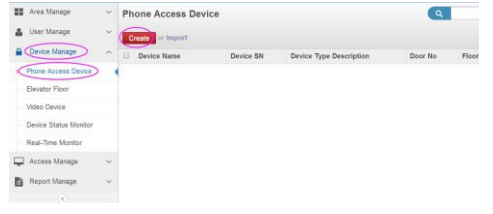
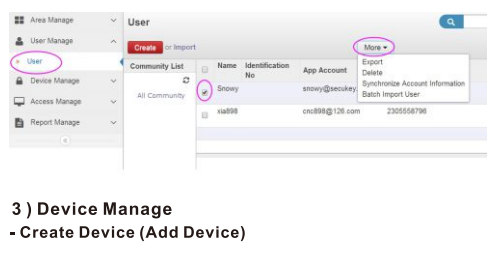
- 09 -



### - Other Operations

For other operations like deleting the user, export etc., please choose the specific user first, then choose the options from menu 'More' (see below):

- 10 -



- 11 -

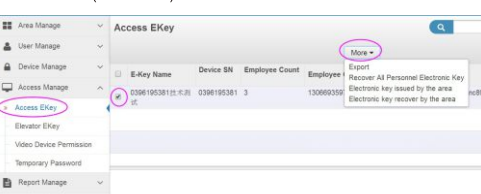
### - Device Setting

For other settings like deleting the device, export etc., please choose the specific device first, then choose the options from menu 'More' (see below):



### 4) Access Manage

- Access EKey  
Please choose the specific EKey first, then choose the options from menu 'More' (see below):



Elevator EKey, Video Device Permission, Temporary Password: Those are not valid.

- 12 -

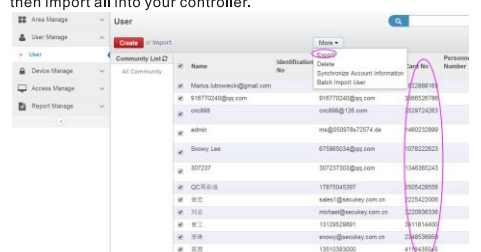
### 5) Report Manage

This step is to manage the IN & OUT records, which can be exported into a sheet or can be deleted, please choose what you need.

### Others

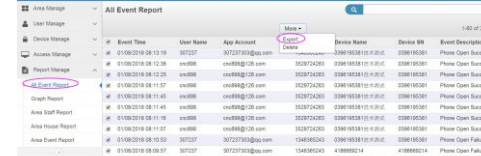
#### 1.Download User Card Number

This step is very useful when you want to add all those users into your controller at once. You download the user card number and then import all into your controller.



#### 2.Download Event Report

This is very helpful to check all phone access records.



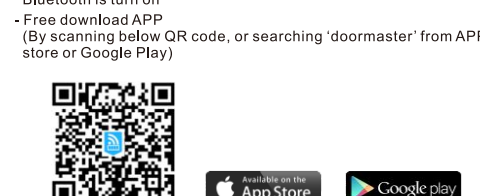
- 13 -

### APP Operation

There are 3 types of Users (Which is set at website background-refer to article '-Set User Area Permission', including Super Admin, Admin and User, please check their authorities as below):

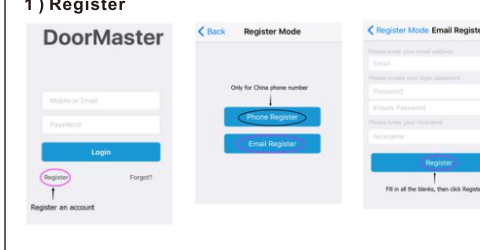
Authority	Super Admin	Admin	Users
Open Door	✓	✓	✓
Change Device Name	✓	✓	✓
Send E-Key	✓	✓	X
Delete E-Key	✓	✓	X
Set Wiegand Format	✓	✓	X
Device Setting (Get Device Info, Device Reset)	✓	X	X

Here are just a few steps to get you started:  
- Make sure your smart phone connects to the network, and the Bluetooth is turn on  
- Free download APP (By scanning below QR code, or searching 'doormaster' from APP store or Google Play)

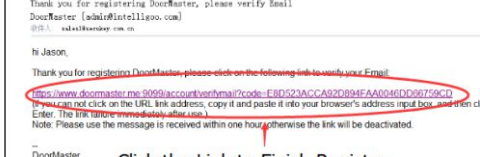


- 14 -

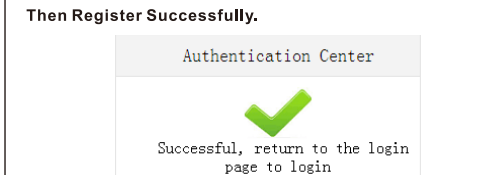
### 1) Register



You will get an email from DoorMaster  
Thank you for registering DoorMaster, please verify email.  
DoorMaster: labid@x11.com



Then Register Successfully.

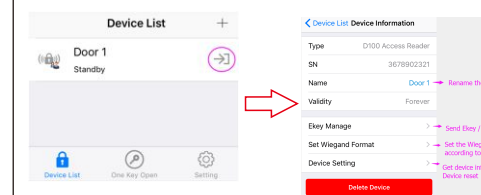


- 15 -

### 2) Configure

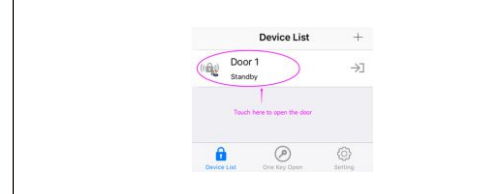
Login into DoorMaster APP, you will see the device is already in the device list (which is added before in website background operation: refer page 9-User Manage), press the key next to device name to enter configure setting menu.

- Change Device Name  
- EKey Manage: Send Ekey/Delete Ekey  
- Set Wiegand Format: Wiegand 26bits or Wiegand 34bits (Default is 34bits)  
- Device Setting



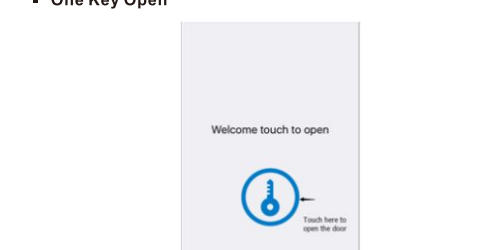
### 3) Open door

- Read the valid user card  
- Touch the device to open the door

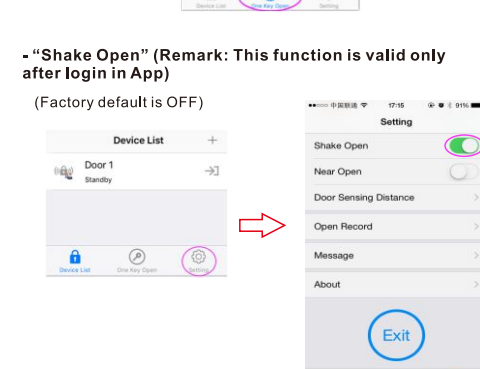


- 16 -

### - "One Key Open"

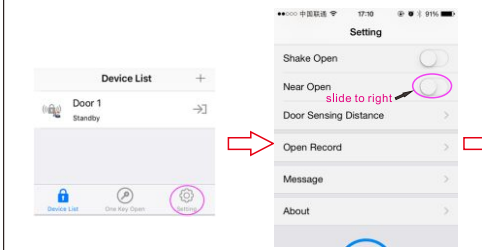


- "Shake Open" (Remark: This function is valid only after login in App)  
(Factory default is OFF)

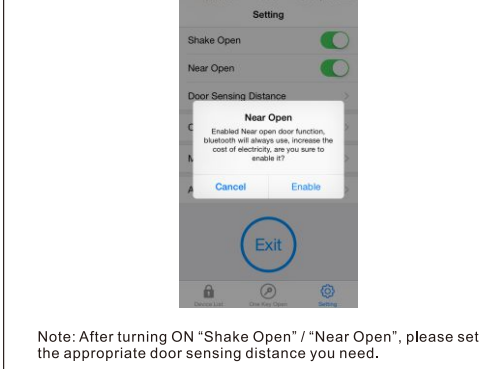


- 17 -

### - "Near Open" (Factory default is OFF)



Note: After turning ON 'Shake Open' / 'Near Open', please set the appropriate door sensing distance you need.



- 18 -