

AN	Quantity	AN dresden elektronik	Designator	Description	Value	Manufacturer	MPN
0031	7	7777	C1, C2, C3, C4, C5, C11, C12	Chip Capacitor 0805 X7R 50V	100n		
0050	1	8854	R5	Chip Resistor 0805	10k		
0057	7	7467	R1, R2, R3, R4, R6, R30, R31	Chip Resistor 0805	1k		
0068	1		P6	AVR JTAG connector 100 mil			
0071	1		PWR	Chip LED 0805 green			
0073	4		LED1, LED2, RX, TX	Chip LED 0805 yellow			
0074	1		RESET	Tactile Switch (SMD)		Omron	B3FS-1000P
0103	1		BT1	Battery Holder 2xAA		Keystone Electronics	2462
0111	1		P7	AVR ISP connector 6-pin			
0119	1	23548	P5	USB connector mini-B			
0126	1		U2	LD1117S33TR, 3.3V LDO	3.3V		
0139	2	4158	J2, P1	Female Header 1x6 100mil			
0140	2	4988	J3, P4	Female Header 1x8 100mil			
0141	1		OUTL1	Arduino Formfactor Outline			
0142	1	21728	U1	FT232RL			
0143	1	28182	P8	deRFmega128-22A001			
0145	2		X1, X2	Female Header 1x23 50mil			
0146	1		X3	Header 1x4 100mil			
0147	3	18905	C6, C7, C8	Chip Capacitor 1210 X5R	100u		
0148	1		R7	Chip Resistor 0805	100R		
0149	1		FE1	Ferit			
0150	1		X4	Power Connector			
0151	1		PWRSEL	Header 2x3 100 mil			
0152	22	7095	R8, R9, R10, R11, R12, R13, R14, R15, R16, R17, R18, R19, R20, R21, R22, R23, R24, R25, R26, R27, R28, R29	Chip Resistor 0805	33R		
0157	2	5760	C9, C10	Chip Capacitor 0805	22p		
0158	1	7160	Y1	Crystal 16 MHz HC49-SMD	16 MHz		

1

2

3

4

A

A

B

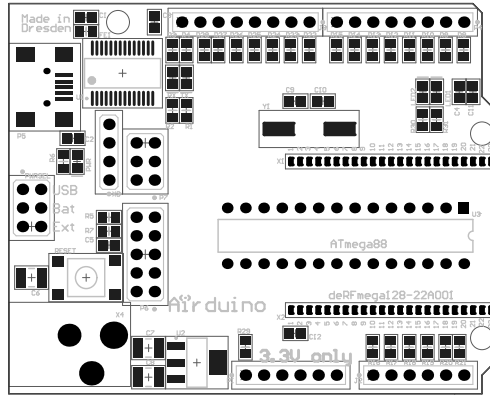
B

C

C

D

D



	ENGINEER:	Daniel Thiele	
	PCB DESIGNER:	Daniel Thiele	
	DATE:	04.11.2010	PART NO:
	FILE NAME:	rfarduino.pcbdoc	DWG NO:
		TITLE: Arduino	
		REV:	1v3
		SCALE:	0.97

1

2

3

4

1

2

3

4

A

A

B

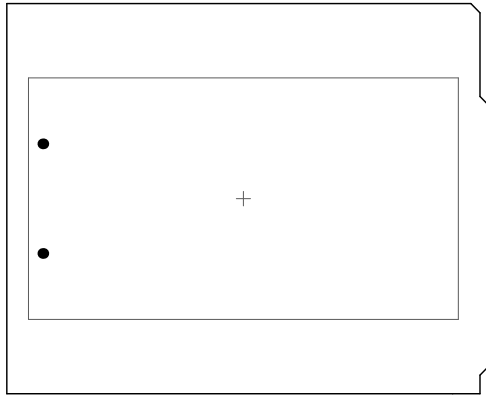
B

C

C

D

D



	ENGINEER: Daniel Thiele	TITLE: Airduino	
	PCB DESIGNER: Daniel Thiele		
	DATE: 04.11.2010	PART NO.:	REV: 1v3
	FILE NAME: rfarduino.pcbdoc	DWG NO.:	SCALE: 0.97

1

2

3

4

1

2

3

4

A

A

B

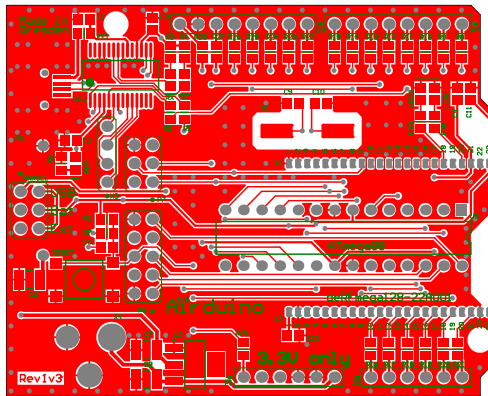
B

C

C

D

D



	ENGINEER:	Daniel Thiele	
	PCB DESIGNER:	Daniel Thiele	
	DATE:	04.11.2010	REV: 1v3
	FILE NAME:	rfdduino.pcbdoc	SCALE: 0.97
	TITLE:	Arduino	
	PART NO.:		DWG NO.:

1

2

3

4

1

2

3

4

A

A

B

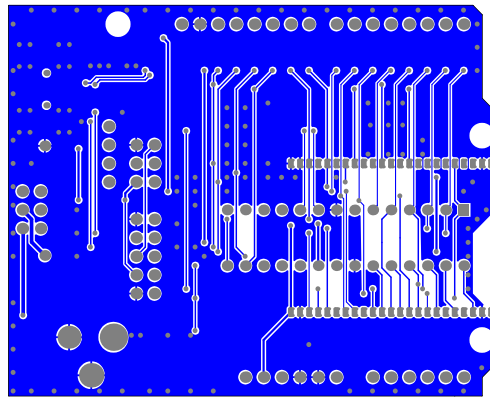
B

C

C

D

D



	ENGINEER: Daniel Thiele	TITLE: Arduino	
	PCB DESIGNER: Daniel Thiele		
DATE: 04.11.2010	PART NO.:	REV: 1v3	
FILE NAME: rduino.pcbdoc	DWG NO.:	SCALE: 0.97	

1

2

3

4

1

2

3

4

A

A

B

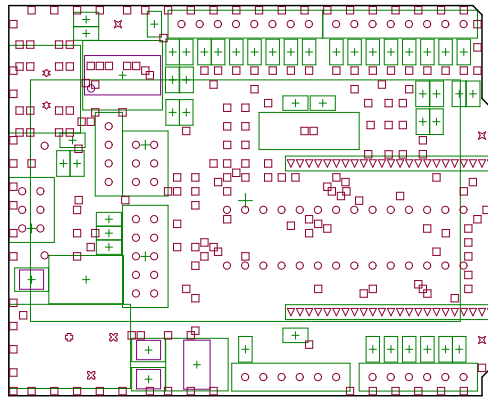
B

C

C

D

D



	ENGINEER:	Daniel Thiele	
	PCB DESIGNER:	Daniel Thiele	
	DATE:	04.11.2010	PART NO:
	FILE NAME:	rarduino.pcbdoc	DWG NO:
		REV:	1v3
		SCALE:	0.97

1

2

3

4

